

## TABLE OF CONTENTS

## A

**Accessories, 4500 Series Grade 1**

|   |        |
|---|--------|
| Alarm Kit.....                                      | 25     |
| Alarm Kit Latchbolt Monitor Switch.....             | 28     |
| Alarm Kit Tamper Switch.....                        | 29     |
| Concealed Vertical Rod Bottom Latch Assembly.....   | 29     |
| Concealed Vertical Rod Top Latch Assembly.....      | 29     |
| Cylinder Cup Spacer 45PN/47PN .....                 | 29, 44 |
| Cylinder Dogging Conversion Kit.....                | 23     |
| End Cap Replacement Packs (standard and flush)..... | 26-27  |
| Extension Rod Kit - 24".....                        | 25     |
| Extension Rod Kit - 36".....                        | 25     |
| Hex Key for Dogging.....                            | 29     |
| Less Bottom Rod Fire Bolt Kit.....                  | 28     |
| Less Bottom Rod Replacement Head Cover Plug.....    | 28     |
| Photoluminescent Push Bar .....                     | 29     |
| Replacement Head Covers.....                        | 24-25  |
| Rod to Rod Connector .....                          | 28     |
| Rod Guide Replacement Pack.....                     | 26     |
| Spring Cage/Hanging Pin Replacement Pack.....       | 27     |
| Surface Vertical Rod Top Latch Assembly.....        | 24     |
| Surface Vertical Rod Bottom Latch Assembly .....    | 23     |
| Screwpacks .....                                    | 27-28  |
| Top or Bottom Latch Cover Replacement Pack.....     | 27     |
| Top or Bottom Rod Replacement Kits.....             | 24     |

**Accessories, 4600 Series Grade 1 Narrow Stile**

|   |    |
|---|----|
| Alarm Kit.....                                      | 34 |
| Alarm Kit Latchbolt Monitor Switch.....             | 35 |
| Alarm Kit Tamper Switch.....                        | 35 |
| Cylinder Dogging Conversion Kit.....                | 33 |
| End Cap Replacement Packs (standard and flush)..... | 35 |
| Hex Key for Dogging.....                            | 35 |
| Rim Replacement Head Cover .....                    | 35 |

**Accessories, 4700 Series Standard Duty**

|                                     |        |
|-------------------------------------|--------|
| Bottom Latch Assembly.....          | 41     |
| Bottom Latch Cover .....            | 43     |
| Cylinder Cup Spacer 45PN/47PN ..... | 29, 44 |
| End Cap Replacement Pack.....       | 44     |
| Extension Rod Kit - 24".....        | 42     |
| Extension Rod Kit - 36".....        | 42     |
| Hex Key for Dogging.....            | 44     |
| Replacement Dogging Plates.....     | 42     |
| Replacement Head Covers.....        | 42     |
| Rod to Rod Connector .....          | 44     |
| Rod Guide Replacement.....          | 43     |
| Screwpacks .....                    | 43-44  |
| Top Latch Assembly.....             | 41     |
| Top Latch Cover.....                | 43     |

|  |    |
|--|----|
| Top or Bottom Rod Replacement Kit..... | 42 |
| Trim Hanging Pin.....                  | 43 |

## C

**Cylinders**

|                                  |       |
|----------------------------------|-------|
| Cylinder Collar, 4500 Trim ..... | 47-48 |
| Cylinder Collar, 4700 Trim ..... | 48    |
| Mortise.....                     | 47    |
| Retaining Cup.....               | 47    |
| Rim.....                         | 46    |

## E

**Exit Devices, Grade 1**

|   |       |
|---|-------|
| How to Order .....  | 6     |
| 4500 Rim Device .....   | 9     |
| 4500 Mortise Lock Exit Device.....  | 12-13 |
| 4500 Concealed Vertical Rod Device .....                                  | 11    |
| 4500 Concealed Vertical Rod Device Less Bottom Rod .....                  | 12    |
| 4500 Dummy Push Pad Device.....   | 13    |
| 4500 Surface Vertical Rod Device.....                                     | 10    |
| 4500 Surface Vertical Rod Device Less Bottom Rod.....                     | 9     |
| 4500 Electric Modifications, Power Supplies, and Alarmed<br>Devices ..... | 4-5   |

**Exit Devices, Grade 1 Narrow Stile**

|   |     |
|---|-----|
| How to Order .....  | 7   |
| 4600 Narrow Stile Rim Device.....   | 30  |
| 4600 Electric Modifications, Power Supplies, and Alarmed<br>Devices ..... | 4-5 |
| 4500 Dummy Push Pad Device.....   | 13  |

**Exit Devices, Standard Duty**

|                                       |    |
|---------------------------------------|----|
| How to Order .....                    | 8  |
| 4700 Rim Device .....                 | 36 |
| 4700 Surface Vertical Rod Device..... | 36 |

## M

**Mullions**

|  |    |
|--|----|
| Mullion Set - Keyed Removable.....                 | 45 |
| Mullion Set - Non-Keyed Removable .....            | 45 |
| Mullion Tube - Keyed Removable .....               | 46 |
| Mullion Tube - Non-Keyed Removable .....           | 45 |
| Stabilizer - Keyed Removable.....                  | 46 |
| Stabilizer - Non-Keyed Removable .....             | 45 |
| Top/Bottom Bracket Set - Keyed Removable.....      | 46 |
| Top/Bottom Bracket Set - Non-Keyed Removable ..... | 45 |



## Exit Devices

---

### S

#### Shim Kit, 4500 Series Grade 1

|                                     |    |
|-------------------------------------|----|
| Shim Kit, Rim Device.....           | 24 |
| Shim Kit, Surface Vertical Rod..... | 24 |

#### Shim Kit, 4600 Series Grade 1 Narrow Stile

|  |    |
|--|----|
| Shim Kit, Narrow Stile Rim Device..... | 34 |
|--|----|

#### Shim Kit, 4700 Series Standard Duty

|                                     |    |
|-------------------------------------|----|
| Shim Kit, Rim Device.....           | 42 |
| Shim Kit, Surface Vertical Rod..... | 42 |

#### Strikes, 4500 Series Grade 1

|  |        |
|--|--------|
| Concealed Vertical Rod, Top Strike, Fire Rated.....  | 26     |
| Concealed Vertical Rod, Top Strike, Standard.....    | 26     |
| Double Door Strike, Standard.....                    | 22     |
| Mortise Device, Fire Rated.....                      | 29     |
| Mortise Device, Standard.....                        | 29     |
| Mullion, Strikes.....                                | 45, 46 |
| Rim Device, Fire Rated.....                          | 22     |
| Rim Device, Standard.....                            | 22     |
| Surface Vertical Rod, Bottom Strike, Fire Rated..... | 23     |
| Surface Vertical Rod, Bottom Strike, Standard.....   | 23     |
| Surface Vertical Rod, Top Strike, Fire Rated.....    | 23     |
| Surface Vertical Rod, Top Strike, Standard.....      | 23     |
| Threshold Strike, Standard.....                      | 22     |

#### Strikes, 4600 Series Grade 1 Narrow Stile

|                       |    |
|-----------------------|----|
| Blade Stop.....       | 34 |
| Rim, Fire Rated.....  | 33 |
| Rim, Standard.....    | 33 |
| Semi-Flush Mount..... | 34 |
| Single Rabbit.....    | 34 |

#### Strikes, 4700 Series Standard Duty

|  |        |
|--|--------|
| Double Door Strike, Standard.....                  | 41     |
| Mullion, Strikes.....                              | 45, 46 |
| Rim Device, Standard.....                          | 41     |
| Surface Vertical Rod, Bottom Strike, Standard..... | 41     |
| Surface Vertical Rod, Top Strike, Standard.....    | 41     |
| Threshold Strike, Standard.....                    | 41     |

### T

#### Trim, 4500 Series Grade 1

|                                   |       |
|-----------------------------------|-------|
| Anti-Vandal Pull.....             | 22    |
| Blank Escutcheon.....             | 13-14 |
| Blank Escutcheon, Mortise.....    | 14-15 |
| Cylinder Escutcheon.....          | 15-16 |
| Cylinder Escutcheon, Mortise..... | 16-17 |
| Dummy Trim.....                   | 17-18 |
| Dummy Trim, Mortise.....          | 18-19 |
| Night Latch.....                  | 19-20 |
| Night Latch, Mortise.....         | 20-21 |
| Pull Plate Trim.....              | 21    |

#### Trim, 4600 Series Grade 1 Narrow Stile

|                          |       |
|--------------------------|-------|
| Blank Escutcheon.....    | 30    |
| Cylinder Escutcheon..... | 31    |
| Dummy Trim.....          | 31-32 |
| Night Latch.....         | 32-33 |
| Night Lever.....         | 32    |

#### Trim, 4700 Series Standard Duty

|                               |       |
|-------------------------------|-------|
| Blank Escutcheon.....         | 36    |
| Cylinder Escutcheon.....      | 37    |
| Dummy Trim.....               | 37    |
| Key-In-Lever Trim.....        | 38-40 |
| Night Latch.....              | 38    |
| Pull Plate Trim.....          | 40    |
| Raised Lip - Dummy.....       | 41    |
| Raised Lip - Night Latch..... | 41    |



## INTRODUCTION

Every model in Hager's line of exit devices is designed and engineered to assure you and your customers years of superior performance. Hager exit devices use fewer moving parts and are constructed with high-quality features--like die cast caps on our lifetime warranty Grade 1 devices, and die cast head covers on all our models. All Hager exit devices meet UL specifications for panic devices and are fire rated for up to three hours.

Hager exit devices were designed with ease of installation in mind. We package our exit devices for convenience and versatility, with thru-bolts included for every model, slotted strikes, and non-handed designs. Hager offers escutcheon trim available in four functions, along with many other trim options.

## Quick Ship

Products denoted with **red and bold** pricing are available to order through the Quick Ship program and ship within 24 hours. When ordering these products please visit [www.hagerco.com](http://www.hagerco.com) and log in to MyHager to access the 'Quick Ship' portal. Due to the promptness of the fulfillment process, Quick Ship orders are non-cancellable.

## Lead Times

Stock items will typically ship in five working days or less from the order entry date. Made-to-order items will typically ship in 15 working days depending on seasonal volume and order complexity. Special orders including industrials, special machining, and large quantities may need to be scheduled. The anticipated ship date will be included with each order acknowledgement. Please contact Customer Service if product availability is in question.

## Cancellation Notification

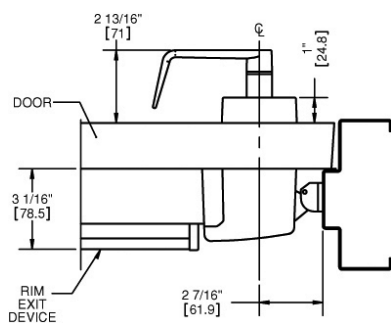
Cancellation for made-to-order items must be communicated within 48 hours of order placement.

## New Finish

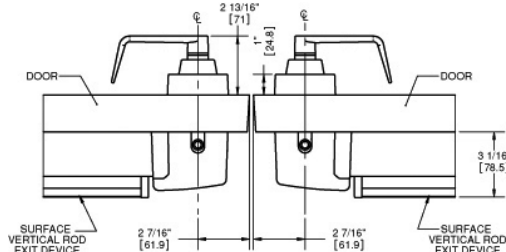
Painted flat black finish (BHMA 693) is now available. Use BLK to designate finish. Extended lead time and MOQ may apply.

## APPLICATIONS

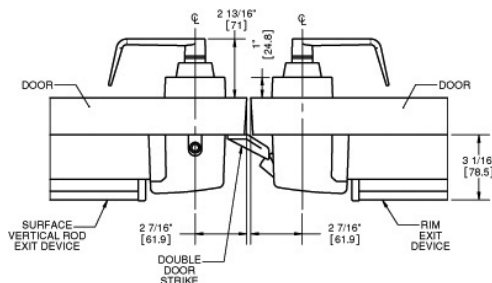
### Single Door with Rim Exit Device



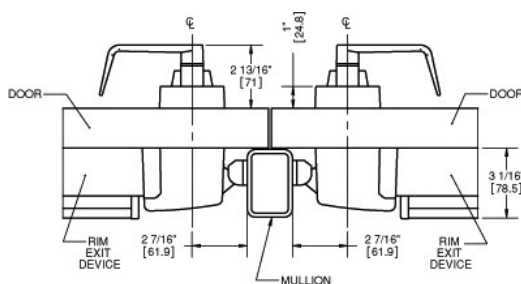
### Double Door with Two Surface Vertical Rod Exit Devices



### Double Door with Rim Exit Device and Surface Vertical Rod Exit Device



### Double Door with Mullion



## Exit Devices

### ELECTRIC MODIFICATIONS - For use with 4500 Series and 4600 Series exit devices

| FUNCTION                                       | FUNCTION # | DESCRIPTION  | ADD TO LIST PRICE |
|--|------------|--|-------------------|
| Electric Latch Retraction                      | ELR        | Provides the means of locking or unlocking exit devices remotely. Requires the use of Hager 2901 or 2902 power supply or warranty voided.<br><i>Note: Mortise Exits will require Motor Driven Latch Retraction.</i>                                | \$908.45          |
| Electric Dogging                               | ED         | Provides continuous latch retraction and dogging simultaneously.   | \$721.90          |
| Request to Exit                                | RX         | Used to shunt an alarm, activate an alarm, provide release of magnetic locks, or signal a console.   | \$290.45          |
| Electric Latch Retraction with Request to Exit | ELRX       | Provides the means of locking or unlocking exit devices remotely, along with an SPDT switch. Requires the use of Hager 2901 or 2902 power supply or warranty voided.<br><i>Note: Mortise Exits will require Motor Driven Latch Retraction.</i>     | \$1,036.70        |
| Electric Dogging with Request to Exit          | EDRX       | Provides continuous latch retraction and dogging simultaneously along with an SPDT switch.   | \$873.45          |
| Dual Request to Exit                           | RX2        | Features two SPDT switches   | \$348.75          |
| Latchbolt Monitoring                           | LM         | An internal SPDT switch that monitors the latchbolt to signal both egress and access of an opening   | \$290.45          |
| Latchbolt Monitoring/ Request to Exit          | RXLM       | Two internal SPDT switches that monitor the latchbolt and the pushbar simultaneously   | \$360.40          |
| Electric Trim*                                 | ET*        | Provides the means of locking or unlocking outside lever trim controls remotely. Specify Fail Safe (EL) or Fail Secure (EU) and voltage (12V or 24V).  | \$535.30          |
| Authorized Ingress/Key Monitoring*             | AI*        | An internal SPDT switch that monitors the operation of the outside trim, available for use with either the 45BE, 45CE or 45NL trim or nightlatch by optional pull. Must be ordered with the device.  | \$302.10          |
| Request to Exit/Authorized Ingress*            | RXAI*      | Two internal SPDT switches that monitor the pushbar and the outside trim simultaneously, available for use with either the 45CE or 45NL trim. Must be ordered with the device.   | \$360.40          |
| Delayed Egress                                 | DE         | Delays egress for 15 or 30 seconds when unauthorized egress is initiated. Wall mount controller (2-679-0630) provides digital countdown display with verbal instructions or alarm tone only and must be ordered seperately, list price \$1,404.50. | \$1,272.00        |
| Onboard Delayed Egress                         | OBDE       | Delays egress for 15 seconds (30 seconds optional) when unauthorized egress is initiated. Modification can be made to 4501 or 4601 exit devices.   | \$2,856.70        |

\*Available on 4500 Series only.



**ELECTRIC MODIFICATIONS** (CONTINUED)

| FUNCTION  | FUNCTION # | DESCRIPTION   | ADD TO LIST PRICE |
|---|------------|---|-------------------|
| Motor Driven Electric Latch Retraction                      | MLR        | Provides the means of locking or unlocking exit devices remotely using an electric motor. Recommend Hager 2903 or 2904 Power Supply.                            | \$1,090.25        |
| Motor Driven Electric Latch Retraction with Request to Exit | MLRX       | Provides the means of locking or unlocking exit devices remotely using an electric motor, along with an SPDT switch. Recommend Hager 2903 or 2904 Power Supply. | \$1,234.40        |
| Electrified Mortise Exit Device                             | EU/EL      | Provides the means of locking or unlocking outside lever trim controls remotely. Specify Fail Safe (EL) or Fail Secure (EU) and voltage (12V or 24V).           | \$535.30          |

**POWER SUPPLIES**

| PRODUCT # | DESCRIPTION   | LIST PRICE                                 |
|-----------|---|--|
| 2901      | For use with 4500/4600 Series electric latch retraction (ELR)   | Reference Electrified Products for Pricing |
| 2902      | For use with 4500/4600 Series electric latch retraction in a day/night mode of operation (ELR)  | Reference Electrified Products for Pricing |
| 2903      | Provides 24 Volt DC power for Fail Safe or Fail Secure locking devices and interface with building alarm controls, card readers, keypads, and other door controls | Reference Electrified Products for Pricing |
| 2904      | Provides 24 Volt DC power and control for openings with an electrified locking device and automatic door operator   | Reference Electrified Products for Pricing |
| 2908      | Provides up to 1 amp of 12 or 24 Volt DC power.   | Reference Electrified Products for Pricing |
| 2909      | Provides up to 2 amps of 12 or 24 Volt DC power.  | Reference Electrified Products for Pricing |

**QUICK CONNECT**

Available for use with 4500 and 4600 Series AI (4500 only), ED, ELR, LM, MLR, and RX. Compatible with Hager Quick Connect Harness Cables which can plug into Hager hinges with quick connect for quick and accurate wiring of the door. No additional charge.

**ALARMED DEVICES****4501/4601 ALK - Alarm Kit**

Add \$337.10 to the list price of the device

**4501/4601 ALM - ALK with Latch Monitor Switch (recommended for use with SVR devices)**

Add \$452.65 to the list price of the device

**4501/4601 ALT - ALK with Tamper Switch**

Add \$454.65 to the list price of the device

**4501/4601 ALL - ALK with Latch Monitor and Tamper Switch**

Add \$568.20 to the list price of the device

Note: Alarm kit components may be purchased separately.



# Exit Devices

## 4500 SERIES HOW TO ORDER

| 4501                 | RIM   | F  | 36"  | US3   | 1-3/4"                                 | ELR  |
|----------------------|---|--|--|---|--|--|
| <b>Product Group</b> | <b>Type</b>   | <b>Rating</b>  | <b>Door Size**</b>   | <b>Finish</b>   | <b>Door Thickness</b>                  | <b>Electric Modifications</b>  |
| 4500 Series, Grade 1 | RIM - Rim Device<br>SVR - Surface Vertical Rod<br>LBR - Surface Vertical Rod<br>Less Bottom Rod *<br>CVR - Concealed Vertical Rod<br>CLB - Concealed Vertical Rod<br>Less Bottom Rod *<br>DMY - Dummy Push Pad<br>MRT - Mortise Device (MC, MB, MD)<br>MRTN - Mortise Night Latch Device (MN) | FR - Fire-Rated<br>0 - Non-Fire Rated<br>CD - Cylinder Dogging<br>L - Less Dogging<br>WR - Windstorm Rated<br>W - Windstorm and Fire-Rated | 36"<br>48"<br>36" x 84"<br>36" x 96"<br>48" x 84"<br>48" x 96" | US3<br>US4<br>US10<br>US10B<br>US26<br>US26D<br>US32D<br><b>BLK (New)</b> | 1-5/8"<br>1-3/4"<br>2"<br>2-1/2"<br>3" | AI - Authorized Ingress ***<br>ALK - Alarm Kit<br>ALL - Alarm Kit w/ Tamper Switch and Latch Monitor<br>ALM - Alarm Kit w/ Latch Monitor<br>ALT - Alarm Kit w/ Tamper Switch<br>ED - Electric Dogging<br>EDRX - Electric Dogging w/ Request to Exit<br>ELR - Electric Latch Retraction<br>ELRX - Electric Latch Retraction w/ Request to Exit<br>LM - Latchbolt Monitor ***<br>RX - Request to Exit<br>RX2 - Dual Request to Exit<br>RXAI - Request to Exit w/ Authorized Ingress ***<br>RXLM - Request to Exit w/ Latchbolt Monitor ***<br>MLR - Motor Driven Electric Latch Retraction<br>MLRX - Motor Driven Electric Latch Retraction w/ Request to Exit |

\*Fire rated LBR and CLB devices must be ordered in pairs for the vertical rod devices or can be used in conjunction with an approved automatic or constant latching flush bolt. When ordering pairs, specify one device LBR and second device LBR with fire bolt, for example: 4501 LBR Fire 36" x 84" plus 4501 LBR Fire 36" x 84" EO with bolt -OR- 4501 LBR Fire 36" x 84" plus an approved automatic or constant latching flush bolt. Add \$50.35 to list price for firebolt kit.

\*\* Exits for doors available. For more details, please call Hager Customer Service. Add \$383.75 to 36" list price. (Requires extended lead-time).

\*\*\* Not available on Mortise devices

## 4500 SERIES TRIM HOW TO ORDER

| 45  | CE   | ARC   | US3  | 1-3/4"                                 | EL24  |
|---|--|---|--|--|---|
| <b>Product Group</b>                                  | <b>Trim/Function</b>                                       | <b>Lever Style</b>  | <b>Finish</b>  | <b>Door Thickness</b>                  | <b>Options</b>  |
| BE - Blank Escutcheon<br>Function 14, always operable | CE - Cylinder Escutcheon<br>Function 08, key locks/unlocks | ARC - Archer<br>AUG - August<br>WLM - William<br>WTN - Withnell<br>CHA - Charles<br>JHN - Johnston**<br>JOS - Joshua<br>LOU - Louis<br>WRN - Warren** | US3<br>US4<br>US10<br>US10B<br>US26<br>US26D<br>US32D (pull plate trim only)<br><b>BLK (New)</b> | 1-5/8"<br>1-3/4"<br>2"<br>2-1/2"<br>3" | EL12 - Fail Safe, 12 Volt ***<br>EL24 - Fail Safe, 24 Volt ***<br>EU12 - Fail Secure, 12 Volt ***<br>EU24 - Fail Secure, 24 Volt ***<br>TW - Tactile Warning<br>A - Antimicrobial Coating<br>US26D & US32D only |

\* Mortise trim does not match centerline of other 4500 series trim. Cannot be used with 4500 Series Rim or Vertical Rod devices.

\*\* Johnston and Warren lever designs are handed - specify LHR/RH or RHR/LH when ordering.

\*\*\* Not available on Mortise Exit trim

### Notes:

- Mortise cylinder 3902 is required for use with cylinder escutcheon trim and pull plate with thumb piece trim and is sold separately.
- Rim cylinder with long tailpiece 3901 is required for use with night latch trim and is sold separately.
- For more cylinder information, please refer to general information in the Locks section of the catalog.
- If using shim kit, specify total door thickness including shims.
- For ET trim, must specify Fail Safe (EL) or Fail Secure (EU) and 12 or 24 volt.
- NEW - Flat Black Finish (BHMA 693). Priced same as US10B. Extended lead times may apply.**



**4600 SERIES HOW TO ORDER**

**4601**

**Product Group**  
4600 Series, Grade 1

**RIM**

**Type**  
RIM - Rim Device

**F**

**Rating**  
F - Fire Rated  
O - Non-Fire Rated  
C - Cylinder Dogging  
L - Less Dogging

**36"**

**Size**  
36"  
48"

**US3**

**Finish**  
US3  
US4  
US10  
US10B  
US26  
US26D  
US32D

**BLK (New)**

**Door Thickness**

1-5/8"  
1-3/4"  
2"

**1-3/4"**

**ELR**

**Electric Modifications**

ALK - Alarm Kit  
ALL - Alarm Kit w/ Tamper Switch and Latch Monitor  
ALM - Alarm Kit w/ Latch Monitor  
ALT - Alarm Kit w/ Tamper Switch  
ED - Electric Dogging  
EDRX - Electric Dogging w/ Request to Exit  
ELR - Electric Latch Retraction  
ELRX - Electric Latch Retraction w/ Request to Exit  
LM - Latchbolt Monitor  
RX - Request to Exit  
RX2 - Dual Request to Exit  
RXLM - Request to Exit w/ Latchbolt Monitor  
MLR - Motor Driven Electric Latch Retraction  
MLRX - Motor Driven Electric Latch Retraction w/ Request to Exit

**4600 SERIES TRIM HOW TO ORDER**

**4600 SERIES TRIM**

**46**

**Product Group**  
46 - 4600 Series, Grade 1

**CE**

**Trim/Function**

BE - Blank Escutcheon  
Function 14, always operable  
CE - Cylinder Escutcheon  
Function 08, key locks/unlocks lever  
DT - Dummy Trim  
Function 02, pull when dogged down  
NL - Night Latch (Not available for 3" door)  
Function 03, key retracts latchbolt  
(for use with 4600 Rim Device only)  
NK - Night Lever, Function 09, key releases lever,  
lever locked when key is removed

**ARC**

**Lever Style**

ARC - Archer  
AUG - August  
WLM - William  
WTN - Withnell

**US3**

**Finish**  
US3  
US4  
US10  
US10B  
US26  
US26D

**BLK (New)**

**1-3/4"**

**Door Thickness**

1-5/8"  
1-3/4"  
2"  
2-1/2"  
3"

**TW**

**Options**

TW - Tactile Warning  
A - Antimicrobial  
Coating - US26D & US32D only

Notes:

1. Mortise cylinder 3902 with 3976 L cam is required for use with cylinder escutcheon trim and is sold separately.
2. Rim cylinder 3901 with long tailpiece is required for use with night latch trim and is sold separately.
3. For more cylinder information, please refer to general information in the Locks section of the catalog.
4. If using shim kit, specify total door thickness including shims.
5. **NEW - Flat Black Finish (BHMA 693). Priced same as US10B. Extended lead times may apply.**



## Exit Devices

### 4700 SERIES HOW TO ORDER

|                            |  |                                      |  |                            |                                  |
|----------------------------|--|--------------------------------------|--|----------------------------|----------------------------------|
| <b>4701</b>                | <b>RIM</b>                                     | <b>F</b>                             | <b>36"</b>   | <b>US3</b>                 | <b>2"</b>                        |
| <b>Product Group</b>       | <b>Type</b>                                    | <b>Rating</b>                        | <b>Size</b>  | <b>Finish</b>              | <b>Door Thickness</b>            |
| 4700 Series, Standard Duty | RIM - Rim Device<br>SVR - Surface Vertical Rod | F - Fire Rated<br>0 - Non-Fire Rated | 36"<br>48"<br>36" x 84"<br>36" x 96"<br>48" x 84"<br>48" x 96" | US3<br>US32D<br>ALM<br>DBZ | 1-5/8"<br>1-3/4"<br>2"<br>2-1/4" |

### 4700 SERIES TRIM HOW TO ORDER

|                                 |   |   |   |                            |                                  |                      |
|---------------------------------|---|---|---|----------------------------|----------------------------------|----------------------|
| <b>47</b>                       | <b>CE</b>   | <b>RH</b>   | <b>ARC</b>  | <b>US3</b>                 | <b>2"</b>                        | <b>TW</b>            |
| <b>Product Group</b>            | <b>Trim/Function</b>  | <b>Handing</b>                                    | <b>Lever Style</b>  | <b>Finish</b>              | <b>Door Thickness</b>            | <b>Options</b>       |
| 47 - 4700 Series, Standard Duty | CE - Cylinder Escutcheon<br>BE - Blank Escutcheon<br>NL - Night Latch<br>DT - Dummy Trim<br>KD - Key in Lever - Dummy Trim<br>KE - Key in Lever - Entrance<br>KN - Key in Lever - Night Latch<br>KP - Key in Lever - Passage<br>PD - Pull Plate Dummy Trim<br>PN - Pull Plate Night Latch<br>RD - Raised Lip Pull - Dummy Trim<br>RN - Raised Lip Pull - Night Latch<br>BT - Thumbpiece Pull Plate, Passage<br>PT - Thumbpiece Pull Plate, Entrance | RH - Right Handed / LHR<br>LH - Left Handed / RHR | ARC - Archer<br>AUG - August<br>WTN - Withnell<br>APL - Apollo knob | US3<br>US32D<br>ALM<br>DBZ | 1-5/8"<br>1-3/4"<br>2"<br>2-1/4" | TW - Tactile Warning |

Notes:

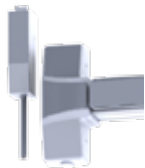
1. Handing is required for the 4700 Series trim.
2. Mortise cylinder, 3902, is sold separately.
3. For more cylinder information, please refer to General Information in the lock section of the catalog.
4. Maximum door thickness compatibility for key-in-lever (Entrance, Night Latch, and Passage) trim is 1-3/4" (44 mm)







| Description   | Length    | Finish | 2018 List      | Stock No. | List Fire Rated | Stock No. | Case Qty. |
|---|-----------|--------|----------------|-----------|-----------------|-----------|-----------|
| <b>4501 RIM</b>   | 36"       | US3    | 996.40         | 158092    | 1137.95         | 158111    | 3         |
| 4501 RIM  | Exit Only | US4    | 996.40         | 158094    | 1137.95         | 158107    |           |
| Grade 1   |           | US10   | 996.40         | 158087    | 1137.95         | 115725    |           |
| Non-Handed  |           | US10B  | 996.40         | 158088    | 1137.95         | 158103    |           |
|   |           | US26   | 996.40         | 158089    | 1137.95         | 158109    |           |
| Cylinder Dogging (specify CD), add \$43.10 to list price. 3902 mortise cylinder with standard cam must be ordered separately. |           | US26D  | <b>961.95</b>  | 158090    | <b>1101.90</b>  | 158104    |           |
|   |           | US32D  | <b>996.40</b>  | 158093    | <b>1137.95</b>  | 158105    |           |
|   | 48"       | US3    | 1031.95        | 156140    | 1181.90         | 156145    | 3         |
| Exit Only   |           | US4    | 1031.95        | 156141    | 1181.90         | 156146    |           |
|   |           | US10   | 1031.95        | 156138    | 1181.90         | 156142    |           |
| Severe Windstorm Rated device, add \$53.90 to list price and specify WR.  |           | US10B  | 1031.95        | 156139    | 1181.90         | 156143    |           |
|   |           | US26   | 1031.95        | 158180    | 1181.90         | 156144    |           |
| Refer to page 4 for electric modification pricing.  |           | US26D  | <b>1007.00</b> | 156135    | 1144.80         | 154983    |           |
|   |           | US32D  | 1031.95        | 156136    | 1181.90         | 156137    |           |
| Anti-microbial coating - add \$46.65 to list price.   |           |        |                |           |                 |           |           |



|   |           |       |         |        |         |        |   |
|---|-----------|-------|---------|--------|---------|--------|---|
| <b>4501 SVR LBR</b>   | 36" x 84" | US3   | 1468.10 | 129450 | 1591.10 | 126690 | 3 |
| Grade 1   | Exit Only | US4   | 1468.10 | 131538 | 1591.10 | 135130 |   |
| Non-Handed  |           | US10  | 1468.10 | 130713 | 1591.10 | 144325 |   |
|   |           | US10B | 1468.10 | 127645 | 1591.10 | 126438 |   |
| Cylinder Dogging (specify CD), add \$43.10 to list price. 3902 mortise cylinder with standard cam must be ordered separately.   |           | US26  | 1468.10 | -      | 1591.10 | 146277 |   |
|   |           | US26D | 1355.75 | 124387 | 1487.75 | 124389 |   |
|   |           | US32D | 1468.10 | 124388 | 1591.10 | 170442 |   |
|   | 36" x 96" | US3   | 1522.70 | -      | 1662.65 | -      | 3 |
| Exit Only   |           | US4   | 1522.70 | 152521 | 1662.65 | 173396 |   |
| Fire rated LBR devices must be ordered in pairs of less bottom rod vertical rod devices and with a spring loaded fire latch (Part # 2-649-0166 - add \$50.35 to list price) to ensure the device's fire rating. |           | US10  | 1522.70 | -      | 1662.65 | 153887 |   |
|   |           | US10B | 1522.70 | 143515 | 1662.65 | 126441 |   |
|   |           | US26  | 1522.70 | -      | 1662.65 | 155427 |   |
|   |           | US26D | 1443.20 | 127422 | 1573.60 | 133810 |   |
|   |           | US32D | 1522.70 | 133952 | 1662.65 | 124391 |   |
|   | 48" x 84" | US3   | 1573.60 | -      | 1707.15 | 146813 | 3 |
| Exit Only   |           | US4   | 1573.60 | 131540 | 1707.15 | 147614 |   |
| Refer to page 4 for electric modification.  |           | US10  | 1573.60 | 148071 | 1707.15 | -      |   |
| Refer to page 25 for extension rod kits for doors over 8 feet in height. Note that these are not fire rated for the LBR.  |           | US10B | 1573.60 | 161824 | 1707.15 | 127646 |   |
|   |           | US26  | 1573.60 | -      | 1707.15 | -      |   |
|   |           | US26D | 1487.75 | 129506 | 1608.55 | 127252 |   |
|   |           | US32D | 1573.60 | 138585 | 1707.15 | 156237 |   |
| Anti-microbial coating - add \$46.65 to list price.   | 48" x 96" | US3   | 1601.70 | -      | 1733.10 | -      | 3 |
| Exit Only   |           | US4   | 1601.70 | -      | 1733.10 | 141078 |   |
|   |           | US10  | 1601.70 | -      | 1733.10 | -      |   |
|   |           | US10B | 1601.70 | 173468 | 1733.10 | 137024 |   |
|   |           | US26  | 1601.70 | -      | 1733.10 | -      |   |
|   |           | US26D | 1573.60 | 147312 | 1662.65 | 129948 |   |
|   |           | US32D | 1601.70 | 149138 | 1733.10 | 138708 |   |

1. Items with the price in **bold and red** are Quick Ship items and ship in 24 hours. Please use stock number when ordering. 2. U/M is each unless otherwise noted.

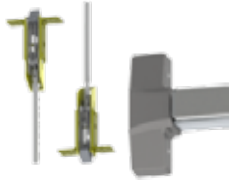


## Exit Devices - 4500



| Description   | Length   | Finish    | 2018 List | Stock No.      | List Fire Rated | Stock No.      | Case Qty. |   |
|---|--|-----------|-----------|----------------|-----------------|----------------|-----------|---|
| <b>4501 SVR</b><br>Grade 1<br>Non-Handed<br><br>Cylinder Dogging (specify CD), add \$43.10 to list price. 3902 mortise cylinder with standard cam must be ordered separately. | 36" x 84"  | US3       | 1468.10   | 157344         | 1591.10         | 157393         | 3         |   |
|   | Exit Only  | US4       | 1468.10   | 157346         | 1591.10         | 157395         |           |   |
|   |  | US10      | 1468.10   | 157398         | 1591.10         | 169257         |           |   |
|   | Severe Windstorm Rated device, add \$53.90 to list price and specify WR. | Exit Only | US10B     | 1468.10        | 157341          | 1591.10        | 157422    |   |
|   |  |           | US26      | 1468.10        | 157342          | 1591.10        | 158058    |   |
|   |  |           | US26D     | <b>1355.75</b> | 157343          | <b>1487.75</b> | 157392    |   |
|   |  |           | US32D     | <b>1468.10</b> | 157345          | <b>1591.10</b> | 157394    |   |
|   | Refer to page 4 for electric modification.                               | Exit Only | US3       | 1522.70        | 157400          | 1662.65        | 157426    | 3 |
|   |  |           | US4       | 1522.70        | 157401          | 1662.65        | 158068    |   |
|   |  |           | US10      | 1522.70        | 157548          | 1662.65        | 158064    |   |
| US10B   |  |           | 1522.70   | 157399         | 1662.65         | 157424         |           |   |
| US26  |  |           | 1522.70   | 157568         | 1662.65         | 157425         |           |   |
| US26D   |  |           | 1443.20   | 157390         | 1573.60         | 157396         |           |   |
| Refer to page 25 for extension rod kits for doors over 8 feet in height.  | Exit Only  | US32D     | 1522.70   | 157391         | 1662.65         | 157397         |           |   |
|   |  | US3       |           |                | 1744.80         | 157419         | 3         |   |
| Anti-microbial coating - add \$46.65 to list price.   | Exit Only  | US4       |           |                | 1744.80         | 157421         |           |   |
|   |  | US10      |           |                | 1744.80         | 157402         |           |   |
|   |  | US10B     |           |                | 1744.80         | 157887         |           |   |
|   |  | US26      |           |                | 1744.80         | 157417         |           |   |
|   |  | US26D     |           |                | 1625.00         | 157418         |           |   |
|   |  | US32D     |           |                | 1744.80         | 157420         |           |   |
| 48" x 84"   | Exit Only  | US3       | 1573.60   | 157895         | 1707.15         | 156229         | 3         |   |
|   |  | US4       | 1573.60   | 156152         | 1707.15         | 158070         |           |   |
|   |  | US10      | 1573.60   | 157734         | 1707.15         | 158070         |           |   |
|   |  | US10B     | 1573.60   | 156149         | 1707.15         | 154982         |           |   |
|   |  | US26      | 1573.60   | 156150         | 1707.15         | 156227         |           |   |
|   |  | US26D     | 1487.75   | 156147         | 1608.55         | 156148         |           |   |
|   |  | US32D     | 1573.60   | 156151         | 1707.15         | 156230         |           |   |
| 48" x 96"   | Exit Only  | US3       | 1601.70   | 157901         | 1733.10         | 158076         | 3         |   |
|   |  | US4       | 1601.70   | 157906         | 1733.10         | 156235         |           |   |
|   |  | US10      | 1601.70   | 157899         | 1733.10         | 158075         |           |   |
|   |  | US10B     | 1601.70   | 157900         | 1733.10         | 156231         |           |   |
|   |  | US26      | 1601.70   | 156153         | 1733.10         | 156232         |           |   |
|   |  | US26D     | 1573.60   | 156154         | 1662.65         | 156233         |           |   |
|   |  | US32D     | 1601.70   | 157905         | 1733.10         | 156234         |           |   |
| 48" x 120"  | Exit Only  | US3       |           |                | 1818.45         | 156224         | 3         |   |
|   |  | US4       |           |                | 1818.45         | 156226         |           |   |
|   |  | US10      |           |                | 1818.45         | 156155         |           |   |
|   |  | US10B     |           |                | 1818.45         | 156156         |           |   |
|   |  | US26      |           |                | 1818.45         | 156157         |           |   |
|   |  | US26D     |           |                | 1692.85         | 158069         |           |   |
| US32D   |  |           | 1818.45   | 156225         |                 |                |           |   |





| Description   | Length    | Finish    | 2018 List | Stock No. | List Fire Rated | Stock No. | Case Qty. |  |
|---|-----------|-----------|-----------|-----------|-----------------|-----------|-----------|--|
| <b>4501 CVR</b><br>Grade 1 - for wood or metal doors<br>Non-Handed<br><br>Cylinder Dogging (specify CD), add \$43.10 to list price. 3902 mortise cylinder with standard cam must be ordered separately. | 36" x 84" | US3       | 1845.50   | 149481    | 2068.10         | 149489    | 3         |  |
|   | Exit Only | US4       | 1845.50   | 149482    | 2068.10         | 149512    |           |  |
|   |           | US10      | 1845.50   | 149484    | 2068.10         | 150548    |           |  |
|   |           | US10B     | 1845.50   | 149310    | 2068.10         | 150549    |           |  |
|   |           | US26      | 1845.50   | 149485    | 2068.10         | 150550    |           |  |
|   |           | US26D     | 1845.50   | 149305    | 2068.10         | 173051    |           |  |
|   |           | US32D     | 1845.50   | 149312    | 2068.10         | 149313    |           |  |
|   | 36" x 96" | US3       | 1884.70   | 150573    | 2107.30         | 150763    | 3         |  |
|   |           | Exit Only | US4       | 1884.70   | 150574          | 2107.30   | 149314    |  |
|   |           |           | US10      | 1884.70   | 150758          | 2107.30   | 150764    |  |
|   |           | US10B     | 1884.70   | 151032    | 2107.30         | 149315    |           |  |
|   |           | US26      | 1884.70   | 150760    | 2107.30         | 150765    |           |  |
|   |           | US26D     | 1884.70   | 150761    | 2107.30         | 149316    |           |  |
| US32D   |           | 1884.70   | 150762    | 2107.30   | 149317          |           |           |  |
| 48" x 84"   | US3       | 1920.75   | 168177    | 2143.35   | 150783          | 3         |           |  |
|   | Exit Only | US4       | 1920.75   | 168179    | 2143.35         | 150784    |           |  |
|   |           | US10      | 1920.75   | 168173    | 2143.35         | 150785    |           |  |
|   |           | US10B     | 1920.75   | 168174    | 2143.35         | 150786    |           |  |
|   |           | US26      | 1920.75   | 168175    | 2143.35         | 150787    |           |  |
|   |           | US26D     | 1920.75   | 168176    | 2143.35         | 150788    |           |  |
|   |           | US32D     | 1920.75   | 168178    | 2143.35         | 156236    |           |  |
|   | 48" x 96" | US3       | 1959.95   | 168182    | 2182.55         | 150796    | 3         |  |
| Exit Only   |           | US4       | 1959.95   | 168184    | 2182.55         | 150797    |           |  |
|   |           | US10      | 1959.95   | 168180    | 2182.55         | 150798    |           |  |
|   |           | US10B     | 1959.95   | 168172    | 2182.55         | 150799    |           |  |
|   |           | US26      | 1959.95   | 168181    | 2182.55         | 150800    |           |  |
|   |           | US26D     | 1959.95   | 168167    | 2182.55         | 150801    |           |  |
|   |           | US32D     | 1959.95   | 168183    | 2182.55         | 150802    |           |  |

1. Items with the price in **bold and red** are Quick Ship items and ship in 24 hours. Please use stock number when ordering. 2. U/M is each unless otherwise noted.



## Exit Devices - 4500



| Description   | Length  | Finish    | 2018 List | Stock No. | List Fire Rated | Stock No. | Case Qty. |   |
|---|---|-----------|-----------|-----------|-----------------|-----------|-----------|---|
| <b>4501 CLB</b><br>Grade 1 - for wood or metal doors<br>Non-Handed<br><br>Cylinder Dogging (specify CD), add \$43.10 to list price. 3902 mortise cylinder with standard cam must be ordered separately.   | 36" x 84"   | US3       | 1845.80   | -         | 2068.10         | -         | 3         |   |
|   | Exit Only   | US4       | 1845.80   | -         | 2068.10         | -         |           |   |
|   |   | US10      | 1845.80   | -         | 2068.10         | -         |           |   |
|   | Fire rated LBR devices must be ordered in pairs of less bottom rod vertical rod devices and with a spring loaded fire bolt (Part # 2-649-0166, add \$50.35 to list price) to ensure the device's fire rating. | Exit Only | US10B     | 1845.80   | 161859          | 2068.10   | -         |   |
|   |   |           | US26      | 1845.80   | -               | 2068.10   | -         |   |
|   |   |           | US26D     | 1845.80   | 161858          | 2068.10   | 161863    |   |
|   |   |           | US32D     | 1845.80   | 161854          | 2068.10   | 161871    |   |
|   | Refer to page 4 for electric modification pricing.  | Exit Only | US3       | 1884.70   | -               | 2107.30   | -         | 3 |
|   |   |           | US4       | 1884.70   | -               | 2107.30   | -         |   |
|   |   |           | US10      | 1884.70   | -               | 2107.30   | -         |   |
| US10B   |   |           | 1884.70   | -         | 2107.30         | 161874    |           |   |
| US26  |   |           | 1884.70   | -         | 2107.30         | -         |           |   |
| US26D   |   |           | 1884.70   | 161872    | 2107.30         | 161875    |           |   |
| Refer to page 25 for extension rod kits for doors over 8 feet in height   | Exit Only   | US32D     | 1884.70   | 161873    | 2107.30         | 161876    |           |   |
|   |   | US3       | 1920.75   | -         | 2143.35         | -         | 3         |   |
|   |   | US4       | 1920.75   | -         | 2143.35         | -         |           |   |
|   |   | US10      | 1920.75   | -         | 2143.35         | -         |           |   |
| Anti-microbial coating - add \$46.65 to list price.   | Exit Only   | US10B     | 1920.75   | 169856    | 2143.35         | -         |           |   |
|   |   | US26      | 1920.75   | -         | 2143.35         | -         |           |   |
|   |   | US26D     | 1920.75   | 161877    | 2143.35         | 173691    |           |   |
|   |   | US32D     | 1920.75   | -         | 2143.35         | 161879    |           |   |
| Grade 1<br>Non-Handed<br><br>Cylinder Dogging (specify CD), add \$43.10 to list price. 3902 mortise cylinder with standard cam must be ordered separately.<br><br>Refer to page 4 for electric modification pricing.<br>Anti-microbial coating - add \$46.65 to list price. | Exit Only   | US3       | 1920.75   | -         | 2143.35         | -         | 3         |   |
|   |   | US4       | 1920.75   | -         | 2143.35         | -         |           |   |
|   |   | US10      | 1920.75   | -         | 2143.35         | -         |           |   |
|   |   | US10B     | 1920.75   | 169856    | 2143.35         | -         |           |   |
|   |   | US26      | 1920.75   | -         | 2143.35         | -         |           |   |
|   |   | US26D     | 1920.75   | 161877    | 2143.35         | 173691    |           |   |
|   |   | US32D     | 1920.75   | -         | 2143.35         | 161879    |           |   |
| <b>4501 M</b><br>(Pair with MB, MC, MD trim)  | Exit Only   | US3       | 1920.75   | -         | 2143.35         | -         | 3         |   |
|   |   | US4       | 1920.75   | -         | 2143.35         | -         |           |   |
|   |   | US10      | 1920.75   | -         | 2143.35         | -         |           |   |
|   |   | US10B     | 1920.75   | 169856    | 2143.35         | -         |           |   |
|   |   | US26      | 1920.75   | -         | 2143.35         | -         |           |   |
|   |   | US26D     | 1920.75   | 161877    | 2143.35         | 173691    |           |   |
|   |   | US32D     | 1920.75   | -         | 2143.35         | 161879    |           |   |
|   |   | US3       | 1959.95   | -         | 2182.55         | -         | 3         |   |
| Exit Only   | US4   | 1959.95   | -         | 2182.55   | -               |           |           |   |
|   | US10  | 1959.95   | -         | 2182.55   | -               |           |           |   |
|   | US10B   | 1959.95   | -         | 2182.55   | -               |           |           |   |
|   | US26  | 1959.95   | -         | 2182.55   | -               |           |           |   |
|   | US26D   | 1959.95   | -         | 2182.55   | -               |           |           |   |
|   | US32D   | 1959.95   | 161881    | 2182.55   | -               |           |           |   |

### Mortise Lock Exit Devices

Grade 1  
Non-Handed

Cylinder Dogging (specify CD), add \$43.10 to list price. 3902 mortise cylinder with standard cam must be ordered separately.

Refer to page 4 for electric modification pricing.  
Anti-microbial coating - add \$46.65 to list price.

|  |           |           |         |         |         |         |        |   |
|--|-----------|-----------|---------|---------|---------|---------|--------|---|
| <b>4501 M</b><br>(Pair with MB, MC, MD trim) | Exit Only | 36"       | US3     | 1851.85 | 162895  | 2035.75 | 162900 | 3 |
|  |           | Exit Only | US4     | 1851.85 | 162897  | 2035.75 | 162901 |   |
|  |           |           | US10    | 1851.85 | 162898  | 2035.75 | 162947 |   |
|  |           |           | US10B   | 1851.85 | 162807  | 2035.75 | 162829 |   |
|  |           |           | US26    | 1851.85 | 162899  | 2035.75 | 162948 |   |
|  |           |           | US26D   | 1787.70 | 162827  | 1966.85 | 162830 |   |
|  |           |           | US32D   | 1851.85 | 162828  | 2035.75 | 162831 |   |
| Exit Only                                    | 48"       | US3       | 1876.20 | 162949  | 2060.15 | 162953  | 3      |   |
|  | Exit Only | US4       | 1876.20 | 162950  | 2060.15 | 162954  |        |   |
|  |           | US10      | 1876.20 | 162951  | 2060.15 | 163724  |        |   |
|  |           | US10B     | 1876.20 | 162832  | 2060.15 | 162836  |        |   |
|  |           | US26      | 1876.20 | 162952  | 2060.15 | 162956  |        |   |
|  |           | US26D     | 1812.10 | 162833  | 1989.10 | 162835  |        |   |
|  |           | US32D     | 1876.20 | 162834  | 2060.15 | 162837  |        |   |



| Description  | Length    | Finish    | 2018 List | Stock No.     | List Fire Rated | Stock No. | Case Qty. |
|--|-----------|-----------|-----------|---------------|-----------------|-----------|-----------|
| <b>4501 N</b><br>(Pair with MN trim)   | 36"       | US3       | 1851.85   | -             | 2035.75         | -         | 3         |
|  |           | Exit Only | US4       | 1851.85       | -               | 2035.75   | -         |
|  |           | US10      | 1851.85   | -             | 2035.75         | -         |           |
|  |           | US10B     | 1851.85   | 163023        | 2035.75         | 163735    |           |
|  |           | US26      | 1851.85   | -             | 2035.75         | -         |           |
|  |           | US26D     | 1787.70   | 163737        | 1966.85         | 163544    |           |
|  |           | US32D     | 1851.85   | 163736        | 2035.75         | 163524    |           |
| 48"  | Exit Only | US3       | 1876.20   | -             | 2060.15         | -         | 3         |
|  |           | US4       | 1876.20   | -             | 2060.15         | -         |           |
|  |           | US10      | 1876.20   | -             | 2060.15         | -         |           |
|  |           | US10B     | 1876.20   | 163734        | 2060.15         | 163731    |           |
|  |           | US26      | 1876.20   | -             | 2060.15         | -         |           |
|  |           | US26D     | 1812.10   | 163733        | 1989.10         | 163730    |           |
|  |           | US32D     | 1876.20   | 163732        | 2060.15         | 163729    |           |
| <b>4501 D</b><br>Dummy Push Pad<br>Non-handed<br>For use with 4500 and 4600 Series<br>Exit Devices                                     | 36"       | US3       | 628.05    | 149393        |                 |           | 3         |
|  |           | US10B     | 628.05    | 149392        |                 |           |           |
|  |           | US26D     | 551.20    | 149391        |                 |           |           |
|  |           | US32D     | 628.05    | 149390        |                 |           |           |
|  |           | 48"       | US3       | 652.45        | 149397          |           |           |
| Anti-microbial coating - add \$46.65 to list price.  | 48"       | US10B     | 652.45    | 149396        |                 |           |           |
|  |           | US26D     | 575.60    | 149395        |                 |           |           |
|  |           | US32D     | 652.45    | 149394        |                 |           |           |
|  |           |           |           |               |                 |           |           |
| <b>45BE</b><br>Blank Escutcheon<br>Tactile Warning - add \$42.40 to list price.<br>Anti-microbial coating - add \$46.65 to list price. |           |           |           |               |                 |           |           |
| <b>Archer Lever</b>  | 14"       | US3       | 508.80    | 122812        |                 |           | 6         |
|  |           | Always    | US4       | 508.80        | 122814          |           |           |
|  |           | Operable  | US10      | 508.80        | 122804          |           |           |
|  |           |           | US10B     | 508.80        | 122806          |           |           |
|  |           |           | US26      | 508.80        | 122808          |           |           |
|  |           |           | US26D     | <b>489.75</b> | 122810          |           |           |
| <b>August Lever</b>  | 14"       | US3       | 508.80    | 122796        |                 |           | 6         |
|  |           | US4       | 508.80    | 122797        |                 |           |           |
|  |           | US10      | 508.80    | 122792        |                 |           |           |
|  |           | US10B     | 508.80    | 122793        |                 |           |           |
|  |           | US26      | 508.80    | 122794        |                 |           |           |
|  |           | US26D     | 489.75    | 122795        |                 |           |           |
| <b>Charles Lever</b>   | 14"       | US3       | 508.80    | -             |                 |           | 6         |
|  |           | US4       | 508.80    | -             |                 |           |           |
|  |           | US10      | 508.80    | -             |                 |           |           |
|  |           | US10B     | 508.80    | 178079        |                 |           |           |
|  |           | US26      | 508.80    | -             |                 |           |           |
|  |           | US26D     | 489.75    | 176196        |                 |           |           |
| <b>Johnston Lever</b><br>(must specify handling)   | 14"       | US3       | 508.80    | -             | 508.80          | -         | 6         |
|  |           | US4       | 508.80    | 178146        | 508.80          | -         |           |
|  |           | US10      | 508.80    | 178136        | 508.80          | 178142    |           |
|  |           | US10B     | 508.80    | 177946        | 508.80          | 177951    |           |
|  |           | US26      | 508.80    | 178130        | 508.80          | 178133    |           |
|  |           | US26D     | 489.75    | 177384        | 489.75          | 177387    |           |



1. Items with the price in **bold and red** are Quick Ship items and ship in 24 hours.  
Please use stock number when ordering. 2. U/M is each unless otherwise noted.



## Exit Devices - 4500

| Description           | Function                 | Finish | 2018 List     | Stock No.<br>LHR | Stock No.<br>RHR | Case<br>Qty. |   |
|-----------------------|--------------------------|--------|---------------|------------------|------------------|--------------|---|
| <b>Joshua Lever</b>   |                          | US3    | 508.80        | -                |                  | 6            |   |
|                       |                          | US4    | 508.80        | -                |                  |              |   |
|                       |                          | US10   | 508.80        | -                |                  |              |   |
|                       |                          | US10B  | 508.80        | 178087           |                  |              |   |
|                       |                          | US26   | 508.80        | -                |                  |              |   |
|                       |                          | US26D  | 489.75        | 178084           |                  |              |   |
| <b>Louis Lever</b>    | 14<br>Always<br>Operable | US3    | 508.80        | 177349           |                  | 6            |   |
|                       |                          | US4    | 508.80        | 177356           |                  |              |   |
|                       |                          | US10   | 508.80        | 177291           |                  |              |   |
|                       |                          | US10B  | 508.80        | 177296           |                  |              |   |
|                       |                          | US26   | 508.80        | 177301           |                  |              |   |
|                       |                          | US26D  | 489.75        | 177305           |                  |              |   |
| <b>Warren Lever</b>   |                          | US3    | 508.80        | -                | 508.80           | -            | 6 |
|                       |                          | US4    | 508.80        | -                | 508.80           | -            |   |
|                       |                          | US10   | 508.80        | -                | 508.80           | -            |   |
|                       |                          | US10B  | 508.80        | 178053           | 508.80           | 178057       |   |
|                       |                          | US26   | 508.80        | -                | 508.80           | -            |   |
|                       |                          | US26D  | 489.75        | 178031           | 489.75           | 178048       |   |
| <b>William Lever</b>  |                          | US3    | 508.80        | 165845           |                  | 6            |   |
|                       |                          | US4    | 508.80        | 165846           |                  |              |   |
|                       |                          | US10   | 508.80        | 165841           |                  |              |   |
|                       |                          | US10B  | 508.80        | 165842           |                  |              |   |
|                       |                          | US26   | 508.80        | 165843           |                  |              |   |
|                       |                          | US26D  | 489.75        | 165844           |                  |              |   |
| <b>Withnell Lever</b> |                          | US3    | 508.80        | 122813           |                  | 6            |   |
|                       |                          | US4    | 508.80        | 122815           |                  |              |   |
|                       |                          | US10   | 508.80        | 122805           |                  |              |   |
|                       |                          | US10B  | 508.80        | 122807           |                  |              |   |
|                       |                          | US26   | 508.80        | 122809           |                  |              |   |
|                       |                          | US26D  | <b>489.75</b> | 122811           |                  |              |   |

| Description   | Function              | Finish | 2018 List | Stock No. | Case<br>Qty. |   |
|---|-----------------------|--------|-----------|-----------|--------------|---|
| <b>45MB</b>   |                       |        |           |           |              |   |
| Blank Escutcheon for use with 4501M Mortise Lock Exit Device<br>Mortise trim does not match centerline of other 4500 Series trim<br>Tactile Warning - add \$42.40 to list price.<br>Anti-microbial coating - add \$46.65 to list price. |                       |        |           |           |              |   |
| <b>Archer Lever</b>   | 14 Always<br>Operable | US3    | 508.80    | 163557    |              | 6 |
|   |                       | US4    | 508.80    | 163596    |              |   |
|   |                       | US10   | 508.80    | 163600    |              |   |
|   |                       | US10B  | 508.80    | 163696    |              |   |
|   |                       | US26   | 508.80    | 163699    |              |   |
|   |                       | US26D  | 489.75    | 163559    |              |   |
| <b>August Lever</b>   |                       | US3    | 508.80    | 163593    |              | 6 |
|   |                       | US4    | 508.80    | 163597    |              |   |
|   |                       | US10   | 508.80    | 163601    |              |   |
|   |                       | US10B  | 508.80    | 163697    |              |   |
|   |                       | US26   | 508.80    | 163700    |              |   |
|   |                       | US26D  | 489.75    | 163560    |              |   |



| Description           | Function | Finish | 2018 List | Stock No. | Case Qty. |
|-----------------------|----------|--------|-----------|-----------|-----------|
| <b>William Lever</b>  |          | US3    | 508.80    | 163594    | 6         |
|                       |          | US4    | 508.80    | 163598    |           |
|                       |          | US10   | 508.80    | 163602    |           |
|                       |          | US10B  | 508.80    | 163698    |           |
|                       |          | US26   | 508.80    | 163701    |           |
|                       |          | US26D  | 489.75    | 163624    |           |
| <b>Withnell Lever</b> |          | US3    | 508.80    | 163595    | 6         |
|                       |          | US4    | 508.80    | 163599    |           |
|                       |          | US10   | 508.80    | 163695    |           |
|                       |          | US10B  | 508.80    | 163558    |           |
|                       |          | US26   | 508.80    | 163702    |           |
|                       |          | US26D  | 489.75    | 163561    |           |



| Description  | Function                            | Finish | 2018 List     | Stock No. LHR | Stock No. RHR | Case Qty. |   |
|--|-------------------------------------|--------|---------------|---------------|---------------|-----------|---|
| <b>45CE</b>  |                                     |        |               |               |               |           |   |
| Cylinder Escutcheon  |                                     |        |               |               |               |           |   |
| Requires a 3902 mortise cylinder (with standard cam) sold separately |                                     |        |               |               |               |           |   |
| Tactile Warning - add \$42.40 to list price.                         |                                     |        |               |               |               |           |   |
| Anti-microbial coating - add \$46.65 to list price.                  |                                     |        |               |               |               |           |   |
| Refer to page 4 for electric modification pricing.                   |                                     |        |               |               |               |           |   |
| <b>Archer Lever</b>  | 08<br>Key locks or<br>unlocks lever | US3    | 508.80        | 122824        |               | 6         |   |
|  |                                     | US4    | 508.80        | 122826        |               |           |   |
|  |                                     | US10   | 508.80        | 122816        |               |           |   |
|  |                                     | US10B  | 508.80        | 122818        |               |           |   |
|  |                                     | US26   | 508.80        | 122820        |               |           |   |
|  |                                     | US26D  | <b>489.75</b> | 122822        |               |           |   |
| <b>August Lever</b>  |                                     | US3    | 508.80        | 122802        |               | 6         |   |
|  |                                     | US4    | 508.80        | 122803        |               |           |   |
|  |                                     | US10   | 508.80        | 122798        |               |           |   |
|  |                                     | US10B  | 508.80        | 122799        |               |           |   |
|  |                                     | US26   | 508.80        | 122800        |               |           |   |
|  |                                     | US26D  | 489.75        | 122801        |               |           |   |
| <b>Charles Lever</b>   |                                     | US3    | 508.80        | -             |               | 6         |   |
|  |                                     | US4    | 508.80        | -             |               |           |   |
|  |                                     | US10   | 508.80        | -             |               |           |   |
|  |                                     | US10B  | 508.80        | 178080        |               |           |   |
|  |                                     | US26   | 508.80        | -             |               |           |   |
|  |                                     | US26D  | 489.75        | 176193        |               |           |   |
| <b>Johnston Lever</b><br>(must specify handling)                     |                                     | US3    | 508.80        | -             | 508.80        | -         | 6 |
|  |                                     | US4    | 508.80        | 178147        | 508.80        | -         |   |
|  |                                     | US10   | 508.80        | 178137        | 508.80        | 178143    |   |
|  |                                     | US10B  | 508.80        | 177948        | 508.80        | 177952    |   |
|  |                                     | US26   | 508.80        | 178131        | 508.80        | 178134    |   |
|  |                                     | US26D  | 489.75        | 177385        | 489.75        | 177386    |   |

1. Items with the price in **bold and red** are Quick Ship items and ship in 24 hours.  
Please use stock number when ordering. 2. U/M is each unless otherwise noted.



## Exit Devices - 4500

| Description           | Function                            | Finish | 2018 List     | Stock No.<br>LHR | Stock No.<br>RHR | Case<br>Qty. |   |
|-----------------------|-------------------------------------|--------|---------------|------------------|------------------|--------------|---|
| <b>Joshua Lever</b>   |                                     | US3    | 508.80        | -                |                  | 6            |   |
|                       |                                     | US4    | 508.80        | -                |                  |              |   |
|                       |                                     | US10   | 508.80        | -                |                  |              |   |
|                       |                                     | US10B  | 508.80        | 178088           |                  |              |   |
|                       |                                     | US26   | 508.80        | -                |                  |              |   |
|                       |                                     | US26D  | 489.75        | 178085           |                  |              |   |
| <b>Louis Lever</b>    | 08<br>Key locks or<br>unlocks lever | US3    | 508.80        | 177350           |                  | 6            |   |
|                       |                                     | US4    | 508.80        | 177357           |                  |              |   |
|                       |                                     | US10   | 508.80        | 177292           |                  |              |   |
|                       |                                     | US10B  | 508.80        | 177298           |                  |              |   |
|                       |                                     | US26   | 508.80        | 177302           |                  |              |   |
|                       |                                     | US26D  | 489.75        | 177306           |                  |              |   |
| <b>Warren Lever</b>   |                                     | US3    | 508.80        | -                | 508.80           | -            | 6 |
|                       |                                     | US4    | 508.80        | -                | 508.80           | -            |   |
|                       |                                     | US10   | 508.80        | -                | 508.80           | -            |   |
|                       |                                     | US10B  | 508.80        | 178054           | 508.80           | 178058       |   |
|                       |                                     | US26   | 508.80        | -                | 508.80           | -            |   |
|                       |                                     | US26D  | 489.75        | 178032           | 489.75           | 178049       |   |
| <b>William Lever</b>  |                                     | US3    | 508.80        | 159126           |                  | 6            |   |
|                       |                                     | US4    | 508.80        | 159127           |                  |              |   |
|                       |                                     | US10   | 508.80        | 159128           |                  |              |   |
|                       |                                     | US10B  | 508.80        | 159121           |                  |              |   |
|                       |                                     | US26   | 508.80        | 159129           |                  |              |   |
|                       |                                     | US26D  | 489.75        | 159109           |                  |              |   |
| <b>Withnell Lever</b> |                                     | US3    | 508.80        | 122825           |                  | 6            |   |
|                       |                                     | US4    | 508.80        | 122827           |                  |              |   |
|                       |                                     | US10   | 508.80        | 122817           |                  |              |   |
|                       |                                     | US10B  | 508.80        | 122819           |                  |              |   |
|                       |                                     | US26   | 508.80        | 122821           |                  |              |   |
|                       |                                     | US26D  | <b>489.75</b> | 122823           |                  |              |   |

| Description  | Function                            | Finish | 2018 List | Stock No. | Case<br>Qty. |
|--|-------------------------------------|--------|-----------|-----------|--------------|
| <b>45MC</b>  |                                     |        |           |           |              |
| Cylinder Escutcheon for use with 4501M Mortise Lock Exit Device              |                                     |        |           |           |              |
| Mortise trim does not match centerline of other 4500 Series trim             |                                     |        |           |           |              |
| Requires a 3902 mortise cylinder (1-5/8" with standard cam) sold separately. |                                     |        |           |           |              |
| Tactile Warning - add \$42.40 to list price.                                 |                                     |        |           |           |              |
| Anti-microbial coating - add \$46.65 to list price.                          |                                     |        |           |           |              |
| <b>Archer Lever</b>  | 08<br>Key locks or<br>unlocks lever | US3    | 508.80    | 163703    | 6            |
|  |                                     | US4    | 508.80    | 163708    |              |
|  |                                     | US10   | 508.80    | 163711    |              |
|  |                                     | US10B  | 508.80    | 163562    |              |
|  |                                     | US26   | 508.80    | 163717    |              |
|  |                                     | US26D  | 489.75    | 163523    |              |
| <b>August Lever</b>  |                                     | US3    | 508.80    | 163704    | 6            |
|  |                                     | US4    | 508.80    | 163709    |              |
|  |                                     | US10   | 508.80    | 163712    |              |
|  |                                     | US10B  | 508.80    | 163715    |              |
|  |                                     | US26   | 508.80    | 163718    |              |
|  |                                     | US26D  | 489.75    | 163564    |              |





| Description           | Function | Finish | 2018 List | Stock No. | Case Qty. |
|-----------------------|----------|--------|-----------|-----------|-----------|
| <b>William Lever</b>  |          | US3    | 508.80    | 163705    | 6         |
|                       |          | US4    | 508.80    | 163625    |           |
|                       |          | US10   | 508.80    | 163713    |           |
|                       |          | US10B  | 508.80    | 163716    |           |
|                       |          | US26   | 508.80    | 163719    |           |
|                       |          | US26D  | 489.75    | 163626    |           |
| <b>Withnell Lever</b> |          | US3    | 508.80    | 163707    | 6         |
|                       |          | US4    | 508.80    | 163710    |           |
|                       |          | US10   | 508.80    | 163714    |           |
|                       |          | US10B  | 508.80    | 163563    |           |
|                       |          | US26   | 508.80    | 163720    |           |
|                       |          | US26D  | 489.75    | 163565    |           |



| Description  | Function                                    | Finish | 2018 List     | Stock No. LHR | Stock No. RHR | Case Qty. |   |
|--|---|--------|---------------|---------------|---------------|-----------|---|
| <b>45DT</b><br>Dummy Trim<br>Tactile Warning - add \$42.40 to list price.<br>Anti-microbial coating - add \$46.65 to list price. |   |        |               |               |               |           |   |
| <b>Archer Lever</b>  | 02<br>Pull when<br>device is<br>dogged down | US3    | 508.80        | 14036         |               | 6         |   |
|  |   | US4    | 508.80        | 14023         |               |           |   |
|  |   | US10   | 508.80        | 14049         |               |           |   |
|  |   | US10B  | 508.80        | 14038         |               |           |   |
|  |   | US26   | 508.80        | 60033         |               |           |   |
|  |   | US26D  | <b>489.75</b> | 60018         |               |           |   |
| <b>August Lever</b>  |   | US3    | 508.80        | 107837        |               | 6         |   |
|  |   | US4    | 508.80        | 107838        |               |           |   |
|  |   | US10   | 508.80        | 107833        |               |           |   |
|  |   | US10B  | 508.80        | 107834        |               |           |   |
|  |   | US26   | 508.80        | 107835        |               |           |   |
|  |   | US26D  | 489.75        | 107836        |               |           |   |
| <b>Charles Lever</b>   |   | US3    | 508.80        | -             |               | 6         |   |
|  |   | US4    | 508.80        | -             |               |           |   |
|  |   | US10   | 508.80        | -             |               |           |   |
|  |   | US10B  | 508.80        | 178082        |               |           |   |
|  |   | US26   | 508.80        | -             |               |           |   |
|  |   | US26D  | 489.75        | 178078        |               |           |   |
| <b>Johnston Lever</b>  |   | US3    | 508.80        | -             | 508.80        | -         | 6 |
|  |   | US4    | 508.80        | 178148        | 508.80        | -         |   |
|  |   | US10   | 508.80        | 178138        | 508.80        | 178144    |   |
|  |   | US10B  | 508.80        | 177949        | 508.80        | 177953    |   |
|  |   | US26   | 508.80        | 178132        | 508.80        | 178135    |   |
|  |   | US26D  | 489.75        | 177937        | 489.75        | 177940    |   |
| <b>Joshua Lever</b>  |   | US3    | 508.80        | -             |               | 6         |   |
|  |   | US4    | 508.80        | -             |               |           |   |
|  |   | US10   | 508.80        | -             |               |           |   |
|  |   | US10B  | 508.80        | 178089        |               |           |   |
|  |   | US26   | 508.80        | -             |               |           |   |
|  |   | US26D  | 489.75        | 178086        |               |           |   |

1. Items with the price in **bold and red** are Quick Ship items and ship in 24 hours.  
Please use stock number when ordering. 2. U/M is each unless otherwise noted.



## Exit Devices - 4500

| Description           | Function                              | Finish        | 2018 List | Stock No.<br>LHR | Stock No.<br>RHR | Case<br>Qty. |
|-----------------------|---------------------------------------|---------------|-----------|------------------|------------------|--------------|
| <b>Louis Lever</b>    | 02                                    | US3           | 508.80    | 177354           |                  | 6            |
|                       | Pull when<br>device is<br>dogged down | US4           | 508.80    | 177358           |                  |              |
|                       |                                       | US10          | 508.80    | 177295           |                  |              |
|                       |                                       | US10B         | 508.80    | 177299           |                  |              |
|                       |                                       | US26          | 508.80    | 177303           |                  |              |
|                       |                                       | US26D         | 489.75    | 177307           |                  |              |
| <b>Warren Lever</b>   | US3                                   | 508.80        | -         | 508.80           | -                | 6            |
|                       | US4                                   | 508.80        | -         | 508.80           | -                |              |
|                       | US10                                  | 508.80        | -         | 508.80           | -                |              |
|                       | US10B                                 | 508.80        | 178055    | 508.80           | 178059           |              |
|                       | US26                                  | 508.80        | -         | 508.80           | -                |              |
|                       | US26D                                 | 489.75        | 178046    | 489.75           | 178050           |              |
| <b>William Lever</b>  | US3                                   | 508.80        | 159142    |                  |                  | 6            |
|                       | US4                                   | 508.80        | 165851    |                  |                  |              |
|                       | US10                                  | 508.80        | 165847    |                  |                  |              |
|                       | US10B                                 | 508.80        | 165848    |                  |                  |              |
|                       | US26                                  | 508.80        | 165849    |                  |                  |              |
|                       | US26D                                 | 489.75        | 165850    |                  |                  |              |
| <b>Withnell Lever</b> | US3                                   | 508.80        | 14035     |                  |                  | 6            |
|                       | US4                                   | 508.80        | 14020     |                  |                  |              |
|                       | US10                                  | 508.80        | 14045     |                  |                  |              |
|                       | US10B                                 | 508.80        | 14037     |                  |                  |              |
|                       | US26                                  | 508.80        | 60027     |                  |                  |              |
|                       | US26D                                 | <b>489.75</b> | 60017     |                  |                  |              |

| Description  | Function                              | Finish | 2018 List | Stock No. | Case<br>Qty. |
|--|---------------------------------------|--------|-----------|-----------|--------------|
| <b>45MD</b>  |                                       |        |           |           |              |
| Dummy Trim for use with 4501M Mortise Lock Exit Device           |                                       |        |           |           |              |
| Mortise trim does not match centerline of other 4500 Series trim |                                       |        |           |           |              |
| Tactile Warning - add \$42.40 to list price.                     |                                       |        |           |           |              |
| Anti-microbial coating - add \$46.65 to list price.              |                                       |        |           |           |              |
| <b>Archer Lever</b>  | 02                                    | US3    | 508.80    | -         | 6            |
|  | Pull when<br>device is<br>dogged down | US4    | 508.80    | -         |              |
|  |                                       | US10   | 508.80    | -         |              |
|  |                                       | US10B  | 508.80    | -         |              |
|  |                                       | US26   | 508.80    | -         |              |
|  |                                       | US26D  | 489.75    | -         |              |
| <b>August Lever</b>  | US3                                   | 508.80 | -         |           | 6            |
|  | US4                                   | 508.80 | -         |           |              |
|  | US10                                  | 508.80 | -         |           |              |
|  | US10B                                 | 508.80 | -         |           |              |
|  | US26                                  | 508.80 | -         |           |              |
|  | US26D                                 | 489.75 | -         |           |              |



| Description           | Function | Finish | 2018 List | Stock No. | Case Qty. |
|-----------------------|----------|--------|-----------|-----------|-----------|
| <b>William Lever</b>  |          | US3    | 508.80    | -         | 6         |
|                       |          | US4    | 508.80    | -         |           |
|                       |          | US10   | 508.80    | -         |           |
|                       |          | US10B  | 508.80    | -         |           |
|                       |          | US26   | 508.80    | -         |           |
|                       |          | US26D  | 489.75    | -         |           |
| <b>Withnell Lever</b> |          | US3    | 508.80    | -         | 6         |
|                       |          | US4    | 508.80    | -         |           |
|                       |          | US10   | 508.80    | -         |           |
|                       |          | US10B  | 508.80    | 163728    |           |
|                       |          | US26   | 508.80    | -         |           |
|                       |          | US26D  | 489.75    | 163727    |           |



| Description   | Function                        | Finish | 2018 List     | Stock No. LHR | Stock No. RHR | Case Qty. |   |
|---|---------------------------------|--------|---------------|---------------|---------------|-----------|---|
| <b>45NL</b>   |                                 |        |               |               |               |           |   |
| Night Latch   |                                 |        |               |               |               |           |   |
| Requires a 3901 rim cylinder (with long tailpiece) sold separately. |                                 |        |               |               |               |           |   |
| Tactile Warning - add \$42.40 to list price.                        |                                 |        |               |               |               |           |   |
| Anti-microbial coating - add \$46.65 to list price.                 |                                 |        |               |               |               |           |   |
| Maximum door thickness compatibility is 2-1/2" (38 mm)              |                                 |        |               |               |               |           |   |
| <b>Archer Lever</b>   | 03<br>Key retracts<br>latchbolt | US3    | 508.80        | 14003         |               | 6         |   |
|   |                                 | US4    | 508.80        | 13984         |               |           |   |
|   |                                 | US10   | 508.80        | 14015         |               |           |   |
|   |                                 | US10B  | 508.80        | 14011         |               |           |   |
|   |                                 | US26   | 508.80        | 60009         |               |           |   |
|   |                                 | US26D  | <b>489.75</b> | 60000         |               |           |   |
| <b>August Lever</b>   |                                 | US3    | 508.80        | 107844        |               | 6         |   |
|   |                                 | US4    | 508.80        | 107845        |               |           |   |
|   |                                 | US10   | 508.80        | 107840        |               |           |   |
|   |                                 | US10B  | 508.80        | 107841        |               |           |   |
|   |                                 | US26   | 508.80        | 107842        |               |           |   |
|   |                                 | US26D  | 489.75        | 107843        |               |           |   |
| <b>Charles Lever</b>  |                                 | US3    | 508.80        | -             |               | 6         |   |
|   |                                 | US4    | 508.80        | -             |               |           |   |
|   |                                 | US10   | 508.80        | -             |               |           |   |
|   |                                 | US10B  | 508.80        | 178083        |               |           |   |
|   |                                 | US26   | 508.80        | -             |               |           |   |
|   |                                 | US26D  | 489.75        | 178429        |               |           |   |
| <b>Johnston Lever</b>   |                                 | US3    | 508.80        | -             | 508.80        | -         | 6 |
|   |                                 | US4    | 508.80        | 178149        | 508.80        | -         |   |
|   |                                 | US10   | 508.80        | 178139        | 508.80        | 178145    |   |
|   |                                 | US10B  | 508.80        | 177950        | 508.80        | 177954    |   |
|   |                                 | US26   | 508.80        | 177955        | 508.80        | 177956    |   |
|   |                                 | US26D  | 489.75        | 177938        | 489.75        | 177941    |   |

1. Items with the price in **bold and red** are Quick Ship items and ship in 24 hours.  
Please use stock number when ordering. 2. U/M is each unless otherwise noted.



## Exit Devices - 4500

| Description           | Function                        | Finish | 2018 List     | Stock No.<br>LHR | Stock No.<br>RHR | Case<br>Qty. |        |
|-----------------------|---------------------------------|--------|---------------|------------------|------------------|--------------|--------|
| <b>Joshua Lever</b>   |                                 | US3    | 508.80        | -                |                  | 6            |        |
|                       |                                 | US4    | 508.80        | -                |                  |              |        |
|                       |                                 | US10   | 508.80        | -                |                  |              |        |
|                       |                                 | US10B  | 508.80        | 178092           |                  |              |        |
|                       |                                 | US26   | 508.80        | -                |                  |              |        |
|                       |                                 | US26D  | 489.75        | 178091           |                  |              |        |
| <b>Louis Lever</b>    | 03<br>Key retracts<br>latchbolt | US3    | 508.80        | 177355           |                  | 6            |        |
|                       |                                 | US4    | 508.80        | 177359           |                  |              |        |
|                       |                                 | US10   | 508.80        | 177294           |                  |              |        |
|                       |                                 | US10B  | 508.80        | 177300           |                  |              |        |
|                       |                                 | US26   | 508.80        | 177304           |                  |              |        |
|                       |                                 | US26D  | 489.75        | 177308           |                  |              |        |
| <b>Warren Lever</b>   |                                 | US3    | 508.80        | -                | 508.80           | 6            |        |
|                       |                                 | US4    | 508.80        | -                | 508.80           |              |        |
|                       |                                 | US10   | 508.80        | -                | 508.80           |              |        |
|                       |                                 | US10B  | 508.80        | 178056           | 508.80           |              | 178060 |
|                       |                                 | US26   | 508.80        | -                | 508.80           |              | -      |
|                       |                                 | US26D  | 489.75        | 178047           | 489.75           |              | 175051 |
| <b>William Lever</b>  |                                 | US3    | 508.80        | 159148           |                  | 6            |        |
|                       |                                 | US4    | 508.80        | 159149           |                  |              |        |
|                       |                                 | US10   | 508.80        | 159131           |                  |              |        |
|                       |                                 | US10B  | 508.80        | 159132           |                  |              |        |
|                       |                                 | US26   | 508.80        | 159133           |                  |              |        |
|                       |                                 | US26D  | 489.75        | 159112           |                  |              |        |
| <b>Withnell Lever</b> |                                 | US3    | 508.80        | 13999            |                  | 6            |        |
|                       |                                 | US4    | 508.80        | 13980            |                  |              |        |
|                       |                                 | US10   | 508.80        | 14012            |                  |              |        |
|                       |                                 | US10B  | 508.80        | 14007            |                  |              |        |
|                       |                                 | US26   | 508.80        | 60008            |                  |              |        |
|                       |                                 | US26D  | <b>489.75</b> | 60001            |                  |              |        |



| Description  | Function                        | Finish | 2018 List | Stock No. | Case<br>Qty. |
|--|---------------------------------|--------|-----------|-----------|--------------|
| <b>45MN</b>  |                                 |        |           |           |              |
| Night Latch for use with 4501N Mortise Lock Exit Device                      |                                 |        |           |           |              |
| Mortise trim does not match centerline of other 4500 Series trim             |                                 |        |           |           |              |
| Requires a 3902 mortise cylinder (1-5/8" with standard cam) sold separately. |                                 |        |           |           |              |
| Tactile Warning - add \$42.40 to list price.                                 |                                 |        |           |           |              |
| Anti-microbial coating - add \$46.65 to list price.                          |                                 |        |           |           |              |
| Maximum door thickness compatibility is 2-1/2" (38 mm)                       |                                 |        |           |           |              |
| <b>Archer Lever</b>  | 03<br>Key retracts<br>latchbolt | US3    | 508.80    | -         | 6            |
|  |                                 | US4    | 508.80    | -         |              |
|  |                                 | US10   | 508.80    | -         |              |
|  |                                 | US10B  | 508.80    | -         |              |
|  |                                 | US26   | 508.80    | -         |              |
|  |                                 | US26D  | 489.75    | 163538    |              |



| Description  | Function                        | Finish | 2018 List | Stock No. | Case Qty. |
|--|---------------------------------|--------|-----------|-----------|-----------|
| <b>August Lever</b>  |                                 | US3    | 508.80    | -         | 6         |
|  |                                 | US4    | 508.80    | -         |           |
|  |                                 | US10   | 508.80    | -         |           |
|  |                                 | US10B  | 508.80    | -         |           |
|  |                                 | US26   | 508.80    | -         |           |
|  |                                 | US26D  | 489.75    | 163725    |           |
| <b>William Lever</b>   |                                 | US3    | 508.80    | -         | 6         |
|  |                                 | US4    | 508.80    | -         |           |
|  |                                 | US10   | 508.80    | -         |           |
|  |                                 | US10B  | 508.80    | -         |           |
|  |                                 | US26   | 508.80    | -         |           |
|  |                                 | US26D  | 489.75    | 169861    |           |
| <b>Withnell Lever</b>  |                                 | US3    | 508.80    | -         | 6         |
|  |                                 | US4    | 508.80    | -         |           |
|  |                                 | US10   | 508.80    | -         |           |
|  |                                 | US10B  | 508.80    | -         |           |
|  |                                 | US26   | 508.80    | -         |           |
|  |                                 | US26D  | 489.75    | 163726    |           |
| <b>45PD</b><br>Pull Plate - Dummy Trim<br><br>For use with 4500 RIM, SVR, LBR, ad CLB devices. Not for CVR.<br>Tactile Warning - add \$42.40 to list price.<br>Anti-microbial coating - add \$46.65 to list price.   | 02                              | US3    | 138.35    | 109038    | 12        |
|  | Pull when device is dogged down | US4    | 138.35    | 109039    |           |
|  |                                 | US10   | 138.35    | 109040    |           |
|  |                                 | US10B  | 138.35    | 109041    |           |
|  |                                 | US26   | 138.35    | 109042    |           |
|  |                                 | US26D  | 138.35    | 109043    |           |
|  | US32D                           | 138.35 | 109044    |           |           |
| <b>45PN</b><br>Pull Plate - Night Latch<br><br>For use with 4500 RIM, SVR, LBR, ad CLB devices. Not for CVR.<br>Requires a 3901 rim cylinder (sold separately)<br>Includes retaining cup for 161 door prep.<br>Tactile Warning - add \$42.40 to list price.<br>Anti-microbial coating - add \$46.65 to list price. | 03                              | US3    | 154.80    | 109048    | 12        |
|  | Key retracts latchbolt          | US4    | 154.80    | 109049    |           |
|  |                                 | US10   | 154.80    | 109050    |           |
|  |                                 | US10B  | 154.80    | 109051    |           |
|  |                                 | US26   | 154.80    | 109052    |           |
|  |                                 | US26D  | 154.80    | 109053    |           |
|  | US32D                           | 154.80 | 109054    |           |           |
| <b>45PT</b><br>Pull Plate - Thumbpiece<br><br>For use with 4501 Rim device<br>Requires a 3902 mortise cylinder (sold separately)<br>Tactile Warning - add \$42.40 to list price.<br>Anti-microbial coating - add \$46.65 to list price.  | 05                              | US32D  | 336.05    | 146142    | 6         |



1. Items with the price in **bold and red** are Quick Ship items and ship in 24 hours. Please use stock number when ordering. 2. U/M is each unless otherwise noted.



## Exit Devices - 4500



| Description  | Finish  | 2018 List            | Stock No. | Case Qty. |
|--|---|----------------------|-----------|-----------|
| <b>313SE (313SF w/Plastisol)</b><br>Anti-Vandal Pull for 4500 Rim device<br>Material: 11 GA stainless steel<br>Max Projection: 1-7/8"<br>Size: 6-11/32 x 11"<br>Door Thickness: 1-3/4" - 2"<br>Fasteners: 1/4" FPHMS with finish washers<br>Rim cylinder 3901 sold separately<br>Retaining cup 2-649-0137 for 161 prep sold separately | Dummy   | US32D                | 307.35    | 185346    |
|  | NL cyl. cutout LHR  | US32D                | 307.35    | 185350    |
|  | NL cyl. cutout RHR  | US32D                | 307.35    | 185352    |
|  | DUMMY   | US32D with Plastisol | 348.40    | 185356    |
|  | NL cyl. cutout LHR  | US32D with Plastisol | 348.40    | 185358    |
|  | NL cyl. cutout RHR  | US32D with Plastisol | 348.40    | 185361    |
|  | <b>313LE (313LF w/Plastisol)</b><br>Anti-Vandal Pull w/Latchguard for 4500 Rim Device<br>Material: 11 GA stainless steel<br>Max Projection: 1-7/8"<br>Size: 6-11/32 x 11"<br>Door Thickness: 1-3/4" - 2"<br>Fasteners: 1/4" FPHMS with finish washers<br>Rim cylinder 3901 sold separately<br>Retaining cup 2-649-0137 for 161 prep sold separately | Dummy                | US32D     | 307.35    |
| NL cyl. cutout LHR   |   | US32D                | 307.35    | 185354    |
| NL cyl. cutout RHR   |   | US32D                | 307.35    | 185353    |
| DUMMY  |   | US32D with Plastisol | 348.40    | 185357    |
| NL cyl. cutout LHR   |   | US32D with Plastisol | 348.40    | 185362    |
| NL cyl. cutout RHR   |   | US32D with Plastisol | 348.40    | 185363    |
| <b>4915</b>  |   | US32D                | 24.95     | 67426     |
| Threshold strike for use with 4500 or 4700 Series.<br>Optional - order separately.<br>Not for fire-rated doors.  |   |                      |           |           |
| <b>4920</b>  | US32D   | 70.00                | 16208     | 24        |
| Strike for use with 4500 Series or 4600 Series Rim exit device.<br>Included with device. Not for fire-rated doors.   |   |                      |           |           |
| <b>4920F</b>   | US32D   | 97.00                | 16207     | 24        |
| Fire rated strike for use with 4500 Series or 4600 Series fire rated Rim exit device.<br>Included with fire rated device.  |   |                      |           |           |
| <b>4921</b><br>Double door strike for 4500 Surface Vertical Rod and Rim exit device.<br>Optional - order separately.<br>Not for fire-rated doors.  | US3   | 70.00                | 102255    | 24        |
|  | US4   | 70.00                | 102256    |           |
|  | US10  | 70.00                | 102257    |           |
|  | US10B   | 70.00                | 102258    |           |
|  | US26  | 70.00                | 102259    |           |
|  | US32D   | 70.00                | 102271    |           |



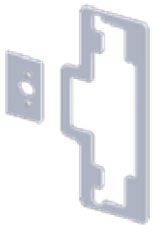


| Description   | Finish | 2018 List | Stock No. | Case Qty. |    |
|---|--------|-----------|-----------|-----------|----|
| <b>4923</b><br>Top strike for use with 4500 Series Surface Vertical Rod device. Included with device.   | US32D  | 44.55     | 16206     | 24        |    |
| <b>4923F</b><br>Fire rated top strike for use with 4500 Series Surface Vertical Rod device. Included with fire rated device.                            | US32D  | 54.60     | 16205     | 24        |    |
| <b>4924</b><br>Bottom strike for use with 4500 Series Vertical Rod devices. Included with panic rated device.   | US32D  | 54.60     | 16203     | 12        |    |
| <b>4924F</b><br>Fire rated bottom strike for use with 4500 Series Vertical Rod device. Included with fire rated device.                                 | US32D  | 58.30     | 16201     | 12        |    |
| <b>4926</b><br>Cylinder Dogging Conversion Kit for panic rated 4500 device<br><br>Requires a 3902 mortise cylinder (with standard cam) sold separately. | 36"    | US3       | 45.60     | 157135    | 48 |
|   |        | US4       | 45.60     | 157137    |    |
|   |        | US10      | 45.60     | 157138    |    |
|   |        | US10B     | 45.60     | 157139    |    |
|   |        | US26      | 45.60     | 157140    |    |
|   |        | US26D     | 45.60     | 157141    |    |
|   |        | US32D     | 45.60     | 157142    |    |
|   | 48"    | US3       | 48.80     | 157143    | 36 |
|   |        | US4       | 48.80     | 157144    |    |
|   |        | US10      | 48.80     | 157145    |    |
|   |        | US10B     | 48.80     | 157146    |    |
|   |        | US26      | 48.80     | 157147    |    |
|   |        | US26D     | 48.80     | 157148    |    |
|   |        | US32D     | 48.80     | 157149    |    |
| <b>4927</b><br>Bottom Latch Assembly for use with 4500 Series SVR Devices<br><br>Includes latch, cover and screws.<br>Included with device.             |        | US3       | 97.00     | 2526      | 24 |
|   |        | US4       | 97.00     | 2525      |    |
|   |        | US10      | 97.00     | 2524      |    |
|   |        | US10B     | 97.00     | 2522      |    |
|   |        | US26      | 97.00     | 2520      |    |
|   |        | US26D     | 97.00     | 2518      |    |
|   |        | US32D     | 97.00     | 2511      |    |

1. Items with the price in **bold and red** are Quick Ship items and ship in 24 hours. Please use stock number when ordering. 2. U/M is each unless otherwise noted.



## Exit Devices - 4500



| Description  | Function  | Finish | 2018 List | Stock No. | Case Qty. |      |
|--|---|--------|-----------|-----------|-----------|------|
| <b>4928</b><br>Top Latch Assembly for use with 4500 Series SVR and LBR Devices<br><br>Includes latch, cover and screws.<br>Included with device.           |   | US3    | 97.00     | 112972    | 24        |      |
|  |   | US4    | 97.00     | 112974    |           |      |
|  |   | US10   | 97.00     | 112968    |           |      |
|  |   | US10B  | 97.00     | 112969    |           |      |
|  |   | US26   | 97.00     | 112970    |           |      |
|  |   | US26D  | 97.00     | 112971    |           |      |
|  |   | US32D  | 97.00     | 112973    |           |      |
| <b>4929</b><br>SVR/LBR Rod Replacement Kit (top or bottom)<br><br>Includes: One (1) each 45-1/4" (1149 mm) rod, rod connector, and appropriate fasteners.  |   | US3    | 45.60     | 2634      | 24        |      |
|  |   | US4    | 45.60     | 2633      |           |      |
|  |   | US10   | 45.60     | 2587      |           |      |
|  |   | US10B  | 45.60     | 2582      |           |      |
|  |   | US26   | 45.60     | 2573      |           |      |
|  |   | US26D  | 45.60     | 2571      |           |      |
| <b>4929C</b><br>CVR/CLB Rod Replacement Kit (top or bottom)<br><br>Includes: One (1) each 46-5/8" (1184 mm) rod, rod connector, and appropriate fasteners. |   | US32D  | 45.60     | 2564      | 24        |      |
|  |   | US26D  | 45.60     | 165570    |           |      |
|  |   | US3    | 82.70     | 1440      |           |      |
|  | <b>4930R</b><br>Shim Kit for 4500 Rim Device<br><br>Packaged 2 ea. 1/8" shims |        | US4       | 82.70     |           | 1438 |
|  |   |        | US10      | 82.70     |           | 1429 |
|  | US10B   | 82.70  | 1428      | 24        |           |      |
|  | US26  | 82.70  | 1426      |           |           |      |
|  | US26D   | 82.70  | 1423      |           |           |      |
| <b>4930S</b><br>Shim Kit for 4500 Surface Vertical Rod Device<br><br>Packaged 2 ea. 1/8" shims   |   | US32D  | 97.00     | 1421      | 24        |      |
|  |   | US3    | 82.70     | 1412      |           |      |
|  |   | US4    | 82.70     | 1411      |           |      |
|  |   | US10   | 82.70     | 1406      |           |      |
|  |   | US10B  | 82.70     | 1404      |           |      |
|  |   | US26   | 82.70     | 1400      |           |      |
|  |   | US26D  | 82.70     | 1391      |           |      |
| <b>4932C</b><br>Replacement Head Cover for 4500 CVR Device   |   | US32D  | 97.00     | 1388      | 20        |      |
|  |   | US3    | 82.70     | 166447    |           |      |
|  |   | US4    | 82.70     | 166449    |           |      |
|  |   | US10   | 82.70     | 166443    |           |      |
|  |   | US10B  | 82.70     | 166444    |           |      |
|  |   | US26   | 82.70     | 166445    |           |      |
|  | US26D   | 82.70  | 166446    |           |           |      |
|  | US32D   | 97.00  | 166448    |           |           |      |







| Description   | Function | Finish | 2018 List | Stock No. | Case Qty. |
|---|----------|--------|-----------|-----------|-----------|
| <b>4932R</b><br>Replacement Head Cover for 4500 Rim Device  |          | US3    | 82.70     | 105036    | 20        |
|   |          | US4    | 82.70     | 105037    |           |
|   |          | US10   | 82.70     | 105038    |           |
|   |          | US10B  | 82.70     | 105039    |           |
|   |          | US26   | 82.70     | 105040    |           |
|   |          | US26D  | 82.70     | 105041    |           |
|   |          | US32D  | 97.00     | 105042    |           |
| <b>4932S</b><br>Replacement Head Cover for 4500 SVR Device  |          | US3    | 82.70     | 105043    | 20        |
|   |          | US4    | 82.70     | 105044    |           |
|   |          | US10   | 82.70     | 105045    |           |
|   |          | US10B  | 82.70     | 105046    |           |
|   |          | US26   | 82.70     | 105047    |           |
|   |          | US26D  | 82.70     | 105048    |           |
|   |          | US32D  | 97.00     | 105049    |           |
| <b>4936</b><br>24" Extension Rod Kit<br><br>Includes 24" extension rod, rod connector, rod guide,<br>and wood and machine screws. |          | US3    | 29.15     | 129372    | 24        |
|   |          | US4    | 29.15     | 129373    |           |
|   |          | US10   | 29.15     | 129374    |           |
|   |          | US10B  | 29.15     | 129375    |           |
|   |          | US26   | 29.15     | 129376    |           |
|   |          | US26D  | 29.15     | 129377    |           |
|   |          | US32D  | 29.15     | 129378    |           |
| <b>4937</b><br>36" Extension Rod Kit<br><br>Includes 36" extension rod, rod connector, rod guide,<br>and wood and machine screws. |          | US3    | 32.90     | 129381    | 24        |
|   |          | US4    | 32.90     | 129382    |           |
|   |          | US10   | 32.90     | 129383    |           |
|   |          | US10B  | 32.90     | 129384    |           |
|   |          | US26   | 32.90     | 129385    |           |
|   |          | US26D  | 32.90     | 129386    |           |
|   |          | US32D  | 32.90     | 129387    |           |
| <b>4940</b><br>Alarm Kit for 4500 Series<br><br>Latchbolt monitor switch and tamper<br>switch available. See page 29.             | 36"      | US3    | 389.55    | 137621    | 24        |
|   |          | US4    | 389.55    | 137622    |           |
|   |          | US10   | 389.55    | 137623    |           |
|   |          | US10B  | 389.55    | 137595    |           |
|   |          | US26   | 389.55    | 137624    |           |
|   |          | US26D  | 389.55    | 137596    |           |
|   |          | US32D  | 389.55    | 137597    |           |
|   | 48"      | US3    | 389.55    | 164020    | 24        |
|   |          | US4    | 389.55    | 164029    |           |
|   |          | US10   | 389.55    | 164004    |           |
|   |          | US10B  | 389.55    | 164008    |           |
|   |          | US26   | 389.55    | 164012    |           |
|   |          | US26D  | 389.55    | 164016    |           |
|   |          | US32D  | 389.55    | 164025    |           |

1. Items with the price in **bold and red** are Quick Ship items and ship in 24 hours.  
Please use stock number when ordering. 2. U/M is each unless otherwise noted.



## Exit Devices - 4500



| Description  | Function | Finish | 2018 List | Stock No. | Case Qty. |
|--|----------|--------|-----------|-----------|-----------|
| <b>4945</b><br>Top Strike Standard for 4501 CVR    |          | US32D  | 45.05     | 150417    |           |
| <b>4945F</b><br>Fire Rated Top Strike for 4501 CVR |          | US32D  | 55.65     | 150418    |           |
| <b>2-649-0031</b><br>Rod Guide Replacement Pack    |          | US3    | 9.05      | 3478      |           |
| <b>2-649-0032</b><br>Rod Guide Replacement Pack    |          | US4    | 9.05      | 3477      |           |
| <b>2-649-0033</b><br>Rod Guide Replacement Pack    |          | US10   | 9.05      | 3476      |           |
| <b>2-649-0034</b><br>Rod Guide Replacement Pack    |          | US10B  | 9.05      | 3473      |           |
| <b>2-649-0035</b><br>Rod Guide Replacement Pack    |          | US26   | 9.05      | 3467      |           |
| <b>2-649-0036</b><br>Rod Guide Replacement Pack    |          | US26D  | 9.05      | 3466      |           |
| <b>2-649-0037</b><br>Rod Guide Replacement Pack    |          | US32D  | 9.05      | 3464      |           |
| <b>2-649-0038</b><br>End Cap Replacement           |          | US3    | 29.15     | 3462      |           |
| <b>2-649-0039</b><br>End Cap Replacement           |          | US4    | 29.15     | 3454      |           |
| <b>2-649-0040</b><br>End Cap Replacement           |          | US10   | 29.15     | 3452      |           |
| <b>2-649-0041</b><br>End Cap Replacement           |          | US10B  | 29.15     | 3435      |           |
| <b>2-649-0042</b><br>End Cap Replacement           |          | US26   | 29.15     | 3433      |           |
| <b>2-649-0043</b><br>End Cap Replacement           |          | US26D  | 29.15     | 3424      |           |
| <b>2-649-0044</b><br>End Cap Replacement           |          | US32D  | 29.15     | 3414      |           |
| <b>2-649-0218</b><br>Flush End Cap                 |          | US3    | 33.95     | 182923    |           |
| <b>2-649-0220</b><br>Flush End Cap                 |          | US4    | 33.95     | 182925    |           |
| <b>2-649-0214</b><br>Flush End Cap                 |          | US10   | 33.95     | 182919    |           |
| <b>2-649-0215</b><br>Flush End Cap                 |          | US10B  | 33.95     | 182920    |           |
| <b>2-649-0216</b><br>Flush End Cap                 |          | US26   | 33.95     | 182921    |           |
| <b>2-649-0217</b><br>Flush End Cap                 |          | US26D  | 33.95     | 182922    |           |



| Description   | Function | Finish | 2018 List | Stock No. | Case Qty. |
|---|----------|--------|-----------|-----------|-----------|
| <b>2-649-0219</b><br>Flush End Cap  |          | US32D  | 33.95     | 182924    |           |
| Note: All end caps come with bracket and fasteners                                  |          |        |           |           |           |
| <b>2-649-0049</b><br>Spring Cage and Hanging Pin for 4500 Series<br>Escutcheon Trim |          | -      | 13.80     | 3405      |           |
| <b>2-649-0060</b><br>Top or Bottom Latch Cover Replacement Pack                     |          | US3    | 51.95     | 3333      |           |
| <b>2-649-0061</b><br>Top or Bottom Latch Cover Replacement Pack                     |          | US4    | 51.95     | 3306      |           |
| <b>2-649-0062</b><br>Top or Bottom Latch Cover Replacement Pack                     |          | US10   | 51.95     | 3304      |           |
| <b>2-649-0063</b><br>Top or Bottom Latch Cover Replacement Pack                     |          | US10B  | 51.95     | 3299      |           |
| <b>2-649-0064</b><br>Top or Bottom Latch Cover Replacement Pack                     |          | US26   | 51.95     | 3297      |           |
| <b>2-649-0065</b><br>Top or Bottom Latch Cover Replacement Pack                     |          | US26D  | 51.95     | 3296      |           |
| <b>2-649-0066</b><br>Top or Bottom Latch Cover Replacement Pack                     |          | US32D  | 51.95     | 3295      |           |
| <b>2-649-0074</b><br>SVR Screwpack - Latch, rod, rod connector,<br>rod guide        |          | US3    | 7.95      | 103548    |           |
| <b>2-649-0075</b><br>SVR Screwpack - Latch, rod, rod connector,<br>rod guide        |          | US4    | 7.95      | 103550    |           |
| <b>2-649-0076</b><br>SVR Screwpack - Latch, rod, rod connector,<br>rod guide        |          | US10   | 7.95      | 103551    |           |
| <b>2-649-0077</b><br>SVR Screwpack - Latch, rod, rod connector,<br>rod guide        |          | US10B  | 7.95      | 103552    |           |
| <b>2-649-0078</b><br>SVR Screwpack - Latch, rod, rod connector,<br>rod guide        |          | US26   | 7.95      | 103553    |           |
| <b>2-649-0079</b><br>SVR Screwpack - Latch, rod, rod connector,<br>rod guide        |          | US26D  | 7.95      | 103554    |           |
| <b>2-649-0080</b><br>SVR Screwpack - Latch, rod, rod connector,<br>rod guide        |          | US32D  | 7.95      | 103555    |           |
| <b>2-649-0081</b><br>SVR Screwpack - Top and bottom strike                          |          | -      | 4.80      | 103556    |           |



1. Items with the price in **bold and red** are Quick Ship items and ship in 24 hours.  
Please use stock number when ordering. 2. U/M is each unless otherwise noted.



## Exit Devices - 4500



| Description   | Length | Finish | 2018 List | Stock No. | Case Qty. |
|---|--------|--------|-----------|-----------|-----------|
| <b>2-649-0082</b><br>Screwpack - Chassis, end cap, head cover, rim strike<br>(4500 & 4600 Series)   |        | US3    | 14.35     | 103558    |           |
| <b>2-649-0083</b><br>Screwpack - Chassis, end cap, head cover, rim strike<br>(4500 & 4600 Series)   |        | US4    | 14.35     | 103559    |           |
| <b>2-649-0084</b><br>Screwpack - Chassis, end cap, head cover, rim strike<br>(4500 & 4600 Series)   |        | US10   | 14.35     | 103560    |           |
| <b>2-649-0085</b><br>Screwpack - Chassis, end cap, head cover, rim strike<br>(4500 & 4600 Series)   |        | US10B  | 14.35     | 103561    |           |
| <b>2-649-0086</b><br>Screwpack - Chassis, end cap, head cover, rim strike<br>(4500 & 4600 Series)   |        | US26   | 14.35     | 103562    |           |
| <b>2-649-0087</b><br>Screwpack - Chassis, end cap, head cover, rim strike<br>(4500 & 4600 Series)   |        | US26D  | 14.35     | 103563    |           |
| <b>2-649-0088</b><br>Screwpack - Chassis, end cap, head cover, rim strike<br>(4500 & 4600 Series)   |        | US32D  | 14.35     | 103582    |           |
| <b>2-649-0166</b><br>Firebolt Kit for Fire Rated 4500 Series LBR and<br>CLB devices.<br>Includes fire bolt, plastic plug, head cover plug, screws,<br>and instructions.<br><br>Must use firebolt with fire rated pairs of less bottom rod<br>vertical rod devices to ensure the device's fire rating. |        | -      | 53.55     | 124539    |           |
| <b>2-649-0167</b><br>LBR Replacement Head Cover Plug<br>Shipped standard if device ordered as LBR   |        | -      | 7.95      | 124540    |           |
| <b>2-649-0168</b><br>Latchbolt Monitor Switch for 4940 and 4941<br>Alarm Kits   |        | -      | 133.60    | 124228    |           |
| <b>2-649-0177</b><br>Rod to Rod Connector   |        | US3    | 7.95      | 129398    |           |
| <b>2-649-0178</b><br>Rod to Rod Connector   |        | US4    | 7.95      | 129399    |           |
| <b>2-649-0179</b><br>Rod to Rod Connector   |        | US10   | 7.95      | 129400    |           |
| <b>2-649-0180</b><br>Rod to Rod Connector   |        | US10B  | 7.95      | 129401    |           |
| <b>2-649-0181</b><br>Rod to Rod Connector   |        | US26   | 7.95      | 129402    |           |
| <b>2-649-0182</b><br>Rod to Rod Connector   |        | US26D  | 7.95      | 129403    |           |
| <b>2-649-0183</b><br>Rod to Rod Connector   |        | US32D  | 7.95      | 129404    |           |





| Description   | Finish | 2018 List | Stock No. | Case Qty. |
|---|--------|-----------|-----------|-----------|
| <b>2-649-0406</b><br>45PN/47PN Cylinder Cup Spacer                  | -      | 8.50      | 182414    |           |
| <b>2-649-1074</b><br>Hex Key for Dogging 5/32"<br>10 pack           | -      | 5.85      | 122690    |           |
| <b>2-649-1090</b><br>Tamper Switch for 4940 and 4941 alarm kits     | -      | 133.60    | 137590    |           |
| <b>2-649-1108</b><br>4501 CVR Top Latch Assembly Replacement Kit    | -      | 80.60     | 150415    |           |
| <b>2-649-1109</b><br>4501 CVR Bottom Latch Assembly Replacement Kit | -      | 80.60     | 150416    |           |
| <b>2-649-0205</b><br>4500 Series Mortise Exit Strike                | US10B  | 24.40     | 174903    |           |
| <b>2-649-0204</b><br>4500 Series Mortise Exit Strike                | US26D  | 24.40     | 174902    |           |
| <b>2-649-0203</b><br>4500 Series Mortise Exit Strike                | US32D  | 24.40     | 174901    |           |
| <b>2-649-0208</b><br>4500 Series Fire Rated Mortise Exit Strike     | US10B  | 24.40     | 174906    |           |
| <b>2-649-0207</b><br>4500 Series Fire Rated Mortise Exit Strike     | US26D  | 24.40     | 174905    |           |
| <b>2-649-0206</b><br>4500 Series Fire Rated Mortise Exit Strike     | US32D  | 24.40     | 174904    |           |
| <b>2-649-0250</b><br>4500/4600 Series 36" Photoluminescent Push Bar |        | 250.00    | 185696    |           |
| <b>2-649-0257</b><br>4500/4600 Series 48" Photoluminescent Push Bar |        | 300.00    | 185792    |           |

1. Items with the price in **bold and red** are Quick Ship items and ship in 24 hours.  
Please use stock number when ordering. 2. U/M is each unless otherwise noted.



## Exit Devices - 4600



| Description   |           | Finish | 2018 List | Stock No. | List Fire Rated | Stock No. | Case Qty. |
|---|-----------|--------|-----------|-----------|-----------------|-----------|-----------|
| <b>4601 RIM</b>   | 36"       | US3    | 1386.50   | 158394    | 1550.25         | 139568    | 3         |
| Narrow Stile Rim  | Exit Only | US4    | 1386.50   | 158396    | 1550.25         | 139569    |           |
| Grade 1   |           | US10   | 1386.50   | 158388    | 1550.25         | 139570    |           |
| Non-Handed  |           | US10B  | 1386.50   | 158343    | 1550.25         | 139571    |           |
|   |           | US26   | 1386.50   | 158390    | 1550.25         | 139572    |           |
| For cylinder dogging (specify CD), add \$43.10 to the list price. 3902 mortise cylinder with standard cam must be ordered separately. |           | US26D  | 1269.90   | 158324    | 1422.00         | 139573    |           |
|   |           | US32D  | 1386.50   | 158344    | 1550.25         | 139574    |           |
|   | 48"       | US3    | 1427.85   | 158401    | 1594.80         | 139592    | 3         |
|   | Exit Only | US4    | 1427.85   | 158402    | 1594.80         | 139593    |           |
|   |           | US10   | 1427.85   | 158397    | 1594.80         | 139594    |           |
| Refer to page 4 for electric modification pricing.  |           | US10B  | 1427.85   | 158398    | 1594.80         | 139595    |           |
|   |           | US26   | 1427.85   | 158399    | 1594.80         | 139596    |           |
| Anti-microbial coating - add \$46.65 to list price.   |           | US26D  | 1307.00   | 156239    | 1466.00         | 139597    |           |
|   |           | US32D  | 1427.85   | 156240    | 1594.80         | 139599    |           |



|   |                    |       |        |        |  |  |   |
|---|--------------------|-------|--------|--------|--|--|---|
| <b>46BE</b>   |                    |       |        |        |  |  |   |
| Blank Escutcheon                                    |                    |       |        |        |  |  |   |
| Tactile Warning - add \$42.40 to list price.        |                    |       |        |        |  |  |   |
| Anti-microbial coating - add \$46.65 to list price. |                    |       |        |        |  |  |   |
| <b>Archer Lever</b>                                 | 14 Always Operable | US3   | 508.80 | 171112 |  |  | 6 |
|   |                    | US4   | 508.80 | 171116 |  |  |   |
|   |                    | US10  | 508.80 | 170816 |  |  |   |
|   |                    | US10B | 508.80 | 171033 |  |  |   |
|   |                    | US26  | 508.80 | 171089 |  |  |   |
|   |                    | US26D | 489.75 | 171090 |  |  |   |
| <b>August Lever</b>                                 |                    | US3   | 508.80 | 171114 |  |  | 6 |
|   |                    | US4   | 508.80 | 171118 |  |  |   |
|   |                    | US10  | 508.80 | 170825 |  |  |   |
|   |                    | US10B | 508.80 | 171084 |  |  |   |
|   |                    | US26  | 508.80 | 171088 |  |  |   |
|   |                    | US26D | 489.75 | 171096 |  |  |   |
| <b>William Lever</b>                                |                    | US3   | 508.80 | 171113 |  |  | 6 |
|   |                    | US4   | 508.80 | 171117 |  |  |   |
|   |                    | US10  | 508.80 | 170819 |  |  |   |
|   |                    | US10B | 508.80 | 171083 |  |  |   |
|   |                    | US26  | 508.80 | 171087 |  |  |   |
|   |                    | US26D | 489.75 | 171071 |  |  |   |
| <b>Withnell Lever</b>                               |                    | US3   | 508.80 | 171115 |  |  | 6 |
|   |                    | US4   | 508.80 | 171119 |  |  |   |
|   |                    | US10  | 508.80 | 171032 |  |  |   |
|   |                    | US10B | 508.80 | 171085 |  |  |   |
|   |                    | US26  | 508.80 | 171089 |  |  |   |
|   |                    | US26D | 489.75 | 171097 |  |  |   |





| Description   | Finish                        | 2018 List | Stock No. | Case Qty. |   |
|---|-------------------------------|-----------|-----------|-----------|---|
| <b>46CE</b>   |                               |           |           |           |   |
| Cylinder Escutcheon   |                               |           |           |           |   |
| Requires a 3902 mortise cylinder (with 3976 L cam) sold separately. |                               |           |           |           |   |
| Tactile Warning - add \$42.40 to list price.                        |                               |           |           |           |   |
| Anti-microbial coating - add \$46.65 to list price.                 |                               |           |           |           |   |
| <b>Archer Lever</b>   | 08                            | US3       | 508.80    | 171510    | 6 |
|   | Key locks or<br>unlocks lever | US4       | 508.80    | 171514    |   |
|   |                               | US10      | 508.80    | 171479    |   |
|   |                               | US10B     | 508.80    | 171483    |   |
|   |                               | US26      | 508.80    | 171504    |   |
|   |                               | US26D     | 489.75    | 171508    |   |
| <b>August Lever</b>   | US3                           | 508.80    | 171512    | 6         |   |
|   | US4                           | 508.80    | 171516    |           |   |
|   | US10                          | 508.80    | 171481    |           |   |
|   | US10B                         | 508.80    | 171503    |           |   |
|   | US26                          | 508.80    | 171506    |           |   |
|   | US26D                         | 489.75    | 171212    |           |   |
| <b>William Lever</b>  | US3                           | 508.80    | 171511    | 6         |   |
|   | US4                           | 508.80    | 171515    |           |   |
|   | US10                          | 508.80    | 171480    |           |   |
|   | US10B                         | 508.80    | 171484    |           |   |
|   | US26                          | 508.80    | 171506    |           |   |
|   | US26D                         | 489.75    | 171211    |           |   |
| <b>Withnell Lever</b>   | US3                           | 508.80    | 171513    | 6         |   |
|   | US4                           | 508.80    | 171518    |           |   |
|   | US10                          | 508.80    | 171482    |           |   |
|   | US10B                         | 508.80    | 171129    |           |   |
|   | US26                          | 508.80    | 171507    |           |   |
|   | US26D                         | 489.75    | 171509    |           |   |



|   |                                       |        |        |        |   |
|---|---------------------------------------|--------|--------|--------|---|
| <b>46DT</b>   |                                       |        |        |        |   |
| Dummy Trim  |                                       |        |        |        |   |
| Tactile Warning - add \$42.40 to list price.        |                                       |        |        |        |   |
| Anti-microbial coating - add \$46.65 to list price. |                                       |        |        |        |   |
| <b>Archer Lever</b>                                 | 02                                    | US3    | 508.80 | 171292 | 6 |
|   | Pull when<br>device is<br>dogged down | US4    | 508.80 | 171296 |   |
|   |                                       | US10   | 508.80 | 171223 |   |
|   |                                       | US10B  | 508.80 | 171228 |   |
|   |                                       | US26   | 508.80 | 171234 |   |
|   |                                       | US26D  | 489.75 | 171283 |   |
| <b>August Lever</b>                                 | US3                                   | 508.80 | 171294 | 6      |   |
|   | US4                                   | 508.80 | 171298 |        |   |
|   | US10                                  | 508.80 | 171226 |        |   |
|   | US10B                                 | 508.80 | 171232 |        |   |
|   | US26                                  | 508.80 | 171281 |        |   |
|   | US26D                                 | 489.75 | 171285 |        |   |
| <b>William Lever</b>                                | US3                                   | 508.80 | 171293 | 6      |   |
|   | US4                                   | 508.80 | 171297 |        |   |
|   | US10                                  | 508.80 | 171224 |        |   |
|   | US10B                                 | 508.80 | 171375 |        |   |
|   | US26                                  | 508.80 | 171280 |        |   |
|   | US26D                                 | 489.75 | 171376 |        |   |

1. Items with the price in **bold and red** are Quick Ship items and ship in 24 hours.  
Please use stock number when ordering. 2. U/M is each unless otherwise noted.



## Exit Devices - 4600

| Description           | Finish | 2018 List | Stock No. | Case Qty. |
|-----------------------|--------|-----------|-----------|-----------|
| <b>Withnell Lever</b> | US3    | 508.80    | 171295    | 6         |
|                       | US4    | 508.80    | 171412    |           |
|                       | US10   | 508.80    | 171227    |           |
|                       | US10B  | 508.80    | 171233    |           |
|                       | US26   | 508.80    | 171282    |           |
|                       | US26D  | 489.75    | 171287    |           |

### 46NK

Night Lever Escutcheon

Requires a 3902 mortise cylinder (with 3976 L cam) sold separately.

Tactile Warning - add \$42.40 to list price.

Anti-microbial coating - add \$46.65 to list price.



|                       |              |        |        |        |   |
|-----------------------|--------------|--------|--------|--------|---|
| <b>Archer Lever</b>   | 09           | US3    | 508.80 | 172076 | 6 |
|                       | Key releases | US4    | 508.80 | 172079 |   |
|                       | lever, lever | US10   | 508.80 | 171546 |   |
|                       | locked when  | US10B  | 508.80 | 171550 |   |
|                       | key removed  | US26   | 508.80 | 171554 |   |
|                       |              | US26D  | 489.75 | 171558 |   |
| <b>August Lever</b>   | US3          | 508.80 | 172077 | 6      |   |
|                       | US4          | 508.80 | 172080 |        |   |
|                       | US10         | 508.80 | 171548 |        |   |
|                       | US10B        | 508.80 | 171552 |        |   |
|                       | US26         | 508.80 | 171556 |        |   |
|                       | US26D        | 489.75 | 171560 |        |   |
| <b>William Lever</b>  | US3          | 508.80 | 172083 | 6      |   |
|                       | US4          | 508.80 | 172082 |        |   |
|                       | US10         | 508.80 | 171547 |        |   |
|                       | US10B        | 508.80 | 17551  |        |   |
|                       | US26         | 508.80 | 171555 |        |   |
|                       | US26D        | 489.75 | 171559 |        |   |
| <b>Withnell Lever</b> | US3          | 508.80 | 172078 | 6      |   |
|                       | US4          | 508.80 | 172081 |        |   |
|                       | US10         | 508.80 | 171549 |        |   |
|                       | US10B        | 508.80 | 171553 |        |   |
|                       | US26         | 508.80 | 171557 |        |   |
|                       | US26D        | 489.75 | 171561 |        |   |

### 46NL

Night Latch

Requires a 3901 rim cylinder (with long tailpiece) sold separately.

Maximum door thickness compatibility is 2-1/2" (38mm).

Tactile Warning - add \$42.40 to list price.

Anti-microbial coating - add \$46.65 to list price.



|                     |              |       |        |        |   |
|---------------------|--------------|-------|--------|--------|---|
| <b>Archer Lever</b> | 03           | US3   | 508.80 | 171538 | 6 |
|                     | Key retracts | US4   | 508.80 | 171542 |   |
|                     | latchbolt    | US10  | 508.80 | 171523 |   |
|                     |              | US10B | 508.80 | 171527 |   |
|                     |              | US26  | 508.80 | 171531 |   |
|                     |              | US26D | 489.75 | 171534 |   |





| Description   | Finish | 2018 List | Stock No. | Case Qty. |    |
|---|--------|-----------|-----------|-----------|----|
| <b>August Lever</b>   | US3    | 508.80    | 171540    | 6         |    |
|   | US4    | 508.80    | 171544    |           |    |
|   | US10   | 508.80    | 171525    |           |    |
|   | US10B  | 508.80    | 171529    |           |    |
|   | US26   | 508.80    | 171533    |           |    |
|   | US26D  | 489.75    | 171536    |           |    |
| <b>William Lever</b>  | US3    | 508.80    | 171539    | 6         |    |
|   | US4    | 508.80    | 171543    |           |    |
|   | US10   | 508.80    | 171524    |           |    |
|   | US10B  | 508.80    | 171528    |           |    |
|   | US26   | 508.80    | 171532    |           |    |
|   | US26D  | 489.75    | 171535    |           |    |
| <b>Withnell Lever</b>   | US3    | 508.80    | 171541    | 6         |    |
|   | US4    | 508.80    | 171545    |           |    |
|   | US10   | 508.80    | 171526    |           |    |
|   | US10B  | 508.80    | 171530    |           |    |
|   | US26   | 508.80    | 171424    |           |    |
|   | US26D  | 489.75    | 171537    |           |    |
| <b>4920</b>   | US32D  | 70.00     | 16208     | 24        |    |
| Strike for use with 4500 or 4600 Series Rim Exit Device.<br>Optional - order separately                                     |        |           |           |           |    |
| <b>4920F</b>  | US32D  | 97.00     | 16207     | 24        |    |
| Fire rated strike for use with 4500 or 4600 Series Fire Rated Rim Exit Device.<br>Included standard with fire rated device. |        |           |           |           |    |
| <b>4925R</b>  | 36"    | US3       | 42.40     | 157187    | 48 |
|   |        | US4       | 42.40     | 157191    |    |
|   |        | US10      | 42.40     | 157192    |    |
|   |        | US10B     | 42.40     | 157193    |    |
|   |        | US26      | 42.40     | 157194    |    |
|   |        | US26D     | 42.40     | 157195    |    |
|   |        | US32D     | 42.40     | 157196    |    |
| 48"   | US3    | 44.55     | 157197    | 36        |    |
|   | US4    | 44.55     | 157198    |           |    |
|   | US10   | 44.55     | 157199    |           |    |
|   | US10B  | 44.55     | 157200    |           |    |
|   | US26   | 44.55     | 157201    |           |    |
|   | US26D  | 44.55     | 157202    |           |    |
|   | US32D  | 44.55     | 157203    |           |    |



1. Items with the price in **bold and red** are Quick Ship items and ship in 24 hours. Please use stock number when ordering. 2. U/M is each unless otherwise noted.

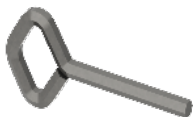


## Exit Devices - 4600



| Description  | Finish | 2018 List | Stock No. | Case Qty. |
|--|--------|-----------|-----------|-----------|
| <b>4941R</b><br>Alarm Kit for 4600 Series Rim Device<br><br>Latchbolt monitor switch and tamper switch available.        | 36"    | US3       | 354.05    | 147106    |
|  |        | US4       | 354.05    | 147107    |
|  |        | US10      | 354.05    | 147108    |
|  |        | US10B     | 354.05    | 167348    |
|  |        | US26      | 354.05    | 147110    |
|  |        | US26D     | 354.05    | 167349    |
|  |        | US32D     | 354.05    | 167464    |
|  | 48"    | US3       | 354.05    | 147140    |
|  |        | US4       | 354.05    | 147146    |
|  |        | US10      | 354.05    | 147147    |
|  | US10B  | 354.05    | 167468    |           |
|  | US26   | 354.05    | 147149    |           |
|  | US26D  | 354.05    | 147150    |           |
|  | US32D  | 354.05    | 167467    |           |
| <b>4950</b><br>Blade stop strike for use with 4600 Series Rim Exit Device.<br>Included standard with panic rated device. | US32D  | 70.00     | 139746    | 24        |
| <b>4951</b><br>Single rabbet strike for use with 4600 Series Rim Exit Device<br>Optional - order separately              | US32D  | 70.00     | 139748    | 24        |
| <b>4952</b><br>Semi-flush mount strike for use with 4600 Series Rim Exit Device<br>Optional - order separately           | US32D  | 70.00     | 139747    | 24        |
| <b>4960R</b><br>Shim Kit for 4600 Series Rim Exit Device<br><br>Packaged 2 each 1/8" shims                               | US3    | 75.30     | 139716    | 24        |
|  | US4    | 75.30     | 139717    |           |
|  | US10   | 75.30     | 139718    |           |
|  | US10B  | 75.30     | 139719    |           |
|  | US26   | 75.30     | 139720    |           |
|  | US26D  | 75.30     | 139721    |           |
| US32D  | 88.55  | 139722    |           |           |



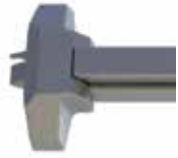


| Description  | Length | Finish | 2018 List | Stock No. | Case Qty. |
|--|--------|--------|-----------|-----------|-----------|
| <b>4965R</b>   |        | US3    | 75.30     | 139700    | 20        |
|  |        | US4    | 75.30     | 139707    |           |
|  |        | US10   | 75.30     | 139708    |           |
|  |        | US10B  | 75.30     | 139709    |           |
|  |        | US26   | 75.30     | 139710    |           |
|  |        | US26D  | 75.30     | 139711    |           |
|  |        | US32D  | 88.55     | 139712    |           |
| <b>2-649-0038</b><br>End Cap Replacement Pack                              |        | US3    | 29.15     | 3462      |           |
| <b>2-649-0039</b><br>End Cap Replacement Pack                              |        | US4    | 29.15     | 3454      |           |
| <b>2-649-0040</b><br>End Cap Replacement Pack                              |        | US10   | 29.15     | 3452      |           |
| <b>2-649-0041</b><br>End Cap Replacement Pack                              |        | US10B  | 29.15     | 3435      |           |
| <b>2-649-0042</b><br>End Cap Replacement Pack                              |        | US26   | 29.15     | 3433      |           |
| <b>2-649-0043</b><br>End Cap Replacement Pack                              |        | US26D  | 29.15     | 3424      |           |
| <b>2-649-0044</b><br>End Cap Replacement Pack                              |        | US32D  | 29.15     | 3414      |           |
| <b>2-649-0218</b><br>Flush End Cap   |        | US3    | 33.95     | 182923    |           |
| <b>2-649-0220</b><br>Flush End Cap   |        | US4    | 33.95     | 182925    |           |
| <b>2-649-0214</b><br>Flush End Cap   |        | US10   | 33.95     | 182919    |           |
| <b>2-649-0215</b><br>Flush End Cap   |        | US10B  | 33.95     | 182920    |           |
| <b>2-649-0216</b><br>Flush End Cap   |        | US26   | 33.95     | 182921    |           |
| <b>2-649-0217</b><br>Flush End Cap   |        | US26D  | 33.95     | 182922    |           |
| <b>2-649-0219</b><br>Flush End Cap   |        | US32D  | 33.95     | 182924    |           |
| Note: All end caps come with bracket and fasteners                         |        |        |           |           |           |
| <b>2-649-0168</b><br>Latchbolt Monitor Switch for 4940 and 4941 Alarm Kits |        | -      | 133.60    | 124228    |           |
| <b>2-649-1074</b><br>Hex Key for Dogging 5/32"<br>10 pack                  |        | -      | 5.30      | 122690    |           |
| <b>2-649-1090</b><br>Tamper Switch for 4940 and 4941 Alarm Kits            |        | -      | 133.60    | 137590    |           |

1. Items with the price in **bold and red** are Quick Ship items and ship in 24 hours.  
Please use stock number when ordering. 2. U/M is each unless otherwise noted.



## Exit Devices - 4700



| Description   | Function               | Finish | 2018 List     | Stock No. | List Fire Rated | Stock No. | Case Qty. |
|---|------------------------|--------|---------------|-----------|-----------------|-----------|-----------|
| <b>4701 RIM</b><br>Standard Duty<br>Non-Handed  | 36" Exit Only          | ALM    | <b>303.20</b> | 118164    | <b>416.60</b>   | 115718    | 3         |
|   |                        | DBZ    | 303.20        | 118165    | 416.60          | 115738    |           |
|   |                        | US3    | 510.95        | 118162    | 627.55          | 115737    |           |
|   |                        | US32D  | <b>510.95</b> | 118163    | <b>627.55</b>   | 115717    |           |
|   | 48" Exit Only          | ALM    | <b>341.35</b> | 118168    | 456.35          | 115720    | 3         |
|   |                        | DBZ    | 341.35        | 118169    | 456.35          | 115740    |           |
|   |                        | US3    | 549.10        | 118166    | 664.10          | 115739    |           |
|   |                        | US32D  | <b>549.10</b> | 118167    | 664.10          | 115719    |           |
| <b>4701 SVR</b><br>Standard Duty<br>Non-Handed<br><br>SVR panic devices available on 10' openings. Order extension rod kits separately. | 36" x 84"<br>Exit Only | ALM    | <b>492.90</b> | 118204    | <b>681.05</b>   | 118190    | 3         |
|   |                        | DBZ    | 492.90        | 118205    | 681.05          | 118191    |           |
|   |                        | US3    | 701.75        | 118170    | 890.40          | 118188    |           |
|   |                        | US32D  | <b>701.75</b> | 118171    | <b>890.40</b>   | 118189    |           |
|   | 36" x 96"<br>Exit Only | ALM    | 532.15        | 118176    | 720.30          | 118194    | 3         |
|   |                        | DBZ    | 532.15        | 118177    | 720.30          | 118195    |           |
|   |                        | US3    | 738.30        | 118174    | 928.60          | 118192    |           |
|   |                        | US32D  | 738.30        | 118175    | 928.60          | 118193    |           |
|   | 48" x 84"<br>Exit Only | ALM    | 549.10        | 118181    | 738.30          | 118198    | 3         |
|   |                        | DBZ    | 549.10        | 118182    | 738.30          | 118199    |           |
|   |                        | US3    | 743.10        | 118178    | 946.05          | 118196    |           |
|   |                        | US32D  | 743.10        | 118180    | 946.05          | 118197    |           |
|   | 48" x 96"<br>Exit Only | ALM    | 568.20        | 118185    | 757.90          | 118202    | 3         |
|   |                        | DBZ    | 568.20        | 118186    | 757.90          | 118203    |           |
|   |                        | US3    | 777.55        | 118183    | 967.25          | 118200    |           |
|   |                        | US32D  | 777.55        | 118184    | 967.25          | 118201    |           |



| Description   | Function                 | Finish | 2018 List     | Stock No. LHR | Stock No. RHR | Case Qty. |   |
|---|--------------------------|--------|---------------|---------------|---------------|-----------|---|
| <b>47BE</b><br>Blank Escutcheon<br>Must specify handing<br>Steel body, zinc lever (US32D has stainless steel cover).<br>For doors thicker than 1-3/4" or when used with a shim kit, specify total door thickness.<br>Tactile Warning - add \$42.40 to list price of item. |                          |        |               |               |               |           |   |
| <b>Archer Lever</b>   | 14<br>Always<br>Operable | ALM    | <b>241.15</b> | 92763         | <b>241.15</b> | 92825     | 6 |
|   |                          | DBZ    | 241.15        | 92760         | 241.15        | 92774     |   |
|   |                          | US3    | 263.45        | 92764         | 263.45        | 92846     |   |
|   |                          | US32D  | <b>263.45</b> | 92772         | <b>263.45</b> | 92889     |   |
| <b>August Lever</b>   |                          | ALM    | <b>241.15</b> | 107647        | <b>241.15</b> | 107648    | 6 |
|   |                          | DBZ    | 241.15        | 107650        | 241.15        | 107649    |   |
|   |                          | US3    | 263.45        | 107640        | 263.45        | 107643    |   |
|   |                          | US32D  | <b>263.45</b> | 107645        | <b>263.45</b> | 107646    |   |
| <b>Withnell Lever</b>   |                          | ALM    | <b>241.15</b> | 92917         | <b>241.15</b> | 93139     | 6 |
|   |                          | DBZ    | 241.15        | 92906         | 241.15        | 93083     |   |
|   |                          | US3    | 263.45        | 92918         | 263.45        | 93173     |   |
|   |                          | US32D  | <b>263.45</b> | 92919         | <b>263.45</b> | 93199     |   |





| Description   | Function                   | Finish        | 2018 List     | Stock No. LHR | Stock No. RHR | Case Qty. |   |
|---|----------------------------|---------------|---------------|---------------|---------------|-----------|---|
| <b>47CE</b>   |                            |               |               |               |               |           |   |
| Cylinder Escutcheon   |                            |               |               |               |               |           |   |
| Must specify handing  |                            |               |               |               |               |           |   |
| Requires a 3902 mortise cylinder (with standard cam) sold separately.                     |                            |               |               |               |               |           |   |
| Steel body, zinc lever (US32D has stainless steel cover).                                 |                            |               |               |               |               |           |   |
| For doors thicker than 1-3/4" or when used with a shim kit, specify total door thickness. |                            |               |               |               |               |           |   |
| Tactile Warning - add \$42.40 to list price of item.                                      |                            |               |               |               |               |           |   |
| <b>Archer Lever</b>   | 08                         | ALM           | <b>241.15</b> | 93208         | <b>241.15</b> | 93829     | 6 |
|   | Key locks or unlocks lever | DBZ           | 241.15        | 93206         | 241.15        | 93819     |   |
|   |                            | US3           | 263.45        | 93219         | 263.45        | 93903     |   |
|   |                            | US32D         | <b>263.45</b> | 93220         | <b>263.45</b> | 93913     |   |
| <b>August Lever</b>   | ALM                        | <b>241.15</b> | 107658        | <b>241.15</b> | 107659        | 6         |   |
|   | DBZ                        | 241.15        | 107660        | 241.15        | 107661        |           |   |
|   | US3                        | 263.45        | 107652        | 263.45        | 107654        |           |   |
|   | US32D                      | <b>263.45</b> | 107655        | <b>263.45</b> | 107657        |           |   |
| <b>Withnell Lever</b>   | ALM                        | <b>241.15</b> | 93778         | <b>241.15</b> | 95104         | 6         |   |
|   | DBZ                        | 241.15        | 93765         | 241.15        | 95004         |           |   |
|   | US3                        | 263.45        | 93786         | 263.45        | 95118         |           |   |
|   | US32D                      | <b>263.45</b> | 93801         | <b>263.45</b> | 95143         |           |   |



|   |                                 |        |        |        |        |       |   |
|---|---------------------------------|--------|--------|--------|--------|-------|---|
| <b>47DT</b>   |                                 |        |        |        |        |       |   |
| Dummy Trim  |                                 |        |        |        |        |       |   |
| Must specify handing  |                                 |        |        |        |        |       |   |
| Steel body, zinc lever (US32D has stainless steel cover).                                 |                                 |        |        |        |        |       |   |
| For doors thicker than 1-3/4" or when used with a shim kit, specify total door thickness. |                                 |        |        |        |        |       |   |
| Tactile Warning - add \$42.40 to list price of item.                                      |                                 |        |        |        |        |       |   |
| <b>Archer Lever</b>   | 02                              | ALM    | 241.15 | 92290  | 241.15 | 92306 | 6 |
|   | Pull when device is dogged down | DBZ    | 241.15 | 92257  | 241.15 | 92304 |   |
|   |                                 | US3    | 263.45 | 92291  | 263.45 | 92320 |   |
|   |                                 | US32D  | 263.45 | 92293  | 263.45 | 92322 |   |
| <b>August Lever</b>   | ALM                             | 241.15 | 107675 | 241.15 | 107674 | 6     |   |
|   | DBZ                             | 241.15 | 107676 | 241.15 | 107677 |       |   |
|   | US3                             | 263.45 | 107669 | 263.45 | 107670 |       |   |
|   | US32D                           | 263.45 | 107671 | 263.45 | 107673 |       |   |
| <b>Withnell Lever</b>   | ALM                             | 241.15 | 92325  | 241.15 | 92391  | 6     |   |
|   | DBZ                             | 241.15 | 92324  | 241.15 | 92386  |       |   |
|   | US3                             | 263.45 | 92367  | 263.45 | 92392  |       |   |
|   | US32D                           | 263.45 | 92189  | 263.45 | 92396  |       |   |

1. Items with the price in **bold and red** are Quick Ship items and ship in 24 hours. Please use stock number when ordering. 2. U/M is each unless otherwise noted.



# Exit Devices - 4700



| Description   | Function               | Finish | 2018 List | Stock No. LHR | 2018 List | Stock No. RHR | Case Qty. |
|---|------------------------|--------|-----------|---------------|-----------|---------------|-----------|
| <b>47NL</b>   |                        |        |           |               |           |               |           |
| Night Latch   |                        |        |           |               |           |               |           |
| Must specify handing  |                        |        |           |               |           |               |           |
| Requires a 3902 mortise cylinder (sold separately) with standard cam.                     |                        |        |           |               |           |               |           |
| Steel body, zinc lever (US32D has stainless steel cover).                                 |                        |        |           |               |           |               |           |
| For doors thicker than 1-3/4" or when used with a shim kit, specify total door thickness. |                        |        |           |               |           |               |           |
| Tactile Warning - add \$42.40 to list price of item.                                      |                        |        |           |               |           |               |           |
| <b>Archer Lever</b>   | 03                     | ALM    | 241.15    | 92451         | 241.15    | 92500         | 6         |
|   | Key retracts latchbolt | DBZ    | 241.15    | 92397         | 241.15    | 92499         |           |
|   |                        | US3    | 263.45    | 92485         | 263.45    | 92531         |           |
|   |                        | US32D  | 263.45    | 92492         | 263.45    | 92532         |           |
| <b>August Lever</b>   |                        | ALM    | 241.15    | 107803        | 241.15    | 107804        | 6         |
|   |                        | DBZ    | 241.15    | 107805        | 241.15    | 107806        |           |
|   |                        | US3    | 263.45    | 107799        | 263.45    | 107800        |           |
|   |                        | US32D  | 263.45    | 107801        | 263.45    | 807802        |           |
| <b>Withnell Lever</b>   |                        | ALM    | 241.15    | 92575         | 241.15    | 92711         | 6         |
|   |                        | DBZ    | 241.15    | 92566         | 241.15    | 92626         |           |
|   |                        | US3    | 263.45    | 92576         | 263.45    | 92714         |           |
|   |                        | US32D  | 263.45    | 92593         | 263.45    | 92723         |           |



|   |   |       |               |        |               |   |    |
|---|---|-------|---------------|--------|---------------|---|----|
| <b>47KD</b>   |   |       |               |        |               |   |    |
| Dummy Trim  |   |       |               |        |               |   |    |
| Steel body and zinc lever (US32D stainless steel rose). |   |       |               |        |               |   |    |
| Tactile Warning - add \$42.40 to list price of item.    |   |       |               |        |               |   |    |
| <b>Archer Lever</b>                                     | 02  | ALM   | <b>218.40</b> | 109800 | <b>218.40</b> | - | 12 |
|   | Entrance by trim when device is dogged down | DBZ   | 218.40        | 109801 | 218.40        | - |    |
|   |   | US3   | 241.15        | 109802 | 241.15        | - |    |
|   |   | US32D | <b>241.15</b> | 109803 | <b>241.15</b> | - |    |
| <b>August Lever</b>                                     |   | ALM   | <b>218.40</b> | 109804 | <b>218.40</b> | - | 12 |
|   |   | DBZ   | 218.40        | 109805 | 218.40        | - |    |
|   |   | US3   | 241.15        | 109806 | 241.15        | - |    |
|   |   | US32D | <b>241.15</b> | 109807 | <b>241.15</b> | - |    |
| <b>Withnell Lever</b>                                   |   | ALM   | <b>218.40</b> | 109808 | <b>218.40</b> | - | 12 |
|   |   | DBZ   | 218.40        | 109809 | 218.40        | - |    |
|   |   | US3   | 241.15        | 109810 | 241.15        | - |    |
|   |   | US32D | <b>241.15</b> | 109811 | <b>241.15</b> | - |    |





| Description   | Function     | Finish | 2018 List     | Stock No. LHR | Stock No. RHR | Case Qty. |    |
|---|--------------|--------|---------------|---------------|---------------|-----------|----|
| <b>47KE</b>   |              |        |               |               |               |           |    |
| Entrance  |              |        |               |               |               |           |    |
| Fixed cylinder standard or SFIC housing option for levers (SFIC cores sold separately, refer to locks section). |              |        |               |               |               |           |    |
| Steel body and zinc lever or knob (US32D stainless steel rose).   |              |        |               |               |               |           |    |
| Tactile Warning - add \$42.40 to list price of item.  |              |        |               |               |               |           |    |
| <b>Archer Lever</b>   | 08           | ALM    | 241.15        | 169423        | 241.15        | 169422    | 12 |
|   | Entrance by  | DBZ    | 241.15        | 169430        | 241.15        | 169429    |    |
|   | trim         | US3    | 263.45        | 169436        | 263.45        | 169435    |    |
|   | key locks or | US32D  | 263.45        | 169442        | 263.45        | 169441    |    |
|   | unlocks trim |        |               |               |               |           |    |
| <b>August Lever</b>   |              | ALM    | 241.15        | 169426        | 241.15        | 169424    | 12 |
|   |              | DBZ    | 241.15        | 169432        | 241.15        | 169431    |    |
|   |              | US3    | 263.45        | 169438        | 263.45        | 169437    |    |
|   |              | US32D  | <b>263.45</b> | 169444        | <b>263.45</b> | 169443    |    |
| <b>Withnell Lever</b>   |              | ALM    | <b>241.15</b> | 169428        | <b>241.15</b> | 169427    | 12 |
|   |              | DBZ    | 241.15        | 169434        | 241.15        | 169433    |    |
|   |              | US3    | 263.45        | 169440        | 263.45        | 169439    |    |
|   |              | US32D  | <b>263.45</b> | 169446        | <b>263.45</b> | 169445    |    |
| <b>Apollo Knob</b>  |              | US32D  | 263.45        | 149372        | 263.45        | 169447    | 12 |
| (not ADA compliant)   |              |        |               |               |               |           |    |



|   |              |       |        |        |        |        |    |
|---|--------------|-------|--------|--------|--------|--------|----|
| <b>47KN</b>   |              |       |        |        |        |        |    |
| Night Latch   |              |       |        |        |        |        |    |
| Fixed cylinder standard or SFIC housing option for levers (SFIC cores sold separately, refer to locks section). |              |       |        |        |        |        |    |
| Steel body, zinc lever or knob (US32D stainless steel rose).  |              |       |        |        |        |        |    |
| Tactile Warning - add \$42.40 to list price of item.  |              |       |        |        |        |        |    |
| <b>Archer Lever</b>   | 03           | ALM   | 241.15 | 127486 | 241.15 | 109767 | 12 |
|   | Key retracts | DBZ   | 241.15 | 127489 | 241.15 | 109768 |    |
|   | latchbolt    | US3   | 263.45 | 127480 | 263.45 | 109769 |    |
|   |              | US32D | 263.45 | 127483 | 263.45 | 109770 |    |
| <b>August Lever</b>   |              | ALM   | 241.15 | 127487 | 241.15 | 109775 | 12 |
|   |              | DBZ   | 241.15 | 127490 | 241.15 | 109776 |    |
|   |              | US3   | 263.45 | 127481 | 263.45 | 109777 |    |
|   |              | US32D | 263.45 | 127484 | 263.45 | 109778 |    |
| <b>Withnell Lever</b>   |              | ALM   | 241.15 | 127488 | 241.15 | 109783 | 12 |
|   |              | DBZ   | 241.15 | 127491 | 241.15 | 109784 |    |
|   |              | US3   | 263.45 | 127482 | 263.45 | 109785 |    |
|   |              | US32D | 263.45 | 127485 | 263.45 | 109786 |    |
| <b>Apollo Knob</b>  |              | US32D | 263.45 | 149373 | 263.45 | -      | 12 |
| (not ADA compliant)   |              |       |        |        |        |        |    |

1. Items with the price in **bold and red** are Quick Ship items and ship in 24 hours. Please use stock number when ordering. 2. U/M is each unless otherwise noted.



# Exit Devices - 4700



| Description  | Function        | Finish        | 2018 List | Stock No. LHR | Stock No. RHR | Case Qty. |
|--|-----------------|---------------|-----------|---------------|---------------|-----------|
| <b>47KP</b>  |                 |               |           |               |               |           |
| Passage  |                 |               |           |               |               |           |
| Steel body, zinc lever (US32D stainless steel rose). |                 |               |           |               |               |           |
| Tactile Warning - add \$42.40 to list price of item. |                 |               |           |               |               |           |
| <b>Archer Lever</b>                                  | 14              | ALM           | 218.40    | 109788        | 218.40        | 12        |
|  | Always operable | DBZ           | 218.40    | 109789        | 218.40        | -         |
|  |                 | US3           | 241.15    | 109790        | 241.15        | -         |
|  |                 | US32D         | 241.15    | 109791        | 241.15        | -         |
| <b>August Lever</b>                                  | ALM             | 218.40        | 109792    | 218.40        | -             | 12        |
|  | DBZ             | 218.40        | 109793    | 218.40        | -             | -         |
|  | US3             | 241.15        | 109794    | 241.15        | -             | -         |
|  | US32D           | 241.15        | 109795    | 241.15        | -             | -         |
| <b>Withnell Lever</b>                                | ALM             | <b>218.40</b> | 109796    | <b>218.40</b> | -             | 12        |
|  | DBZ             | 218.40        | 109797    | 218.40        | -             | -         |
|  | US3             | 241.15        | 109798    | 241.15        | -             | -         |
|  | US32D           | <b>241.15</b> | 109799    | <b>241.15</b> | -             | -         |



| Description  | Function                        | Finish | 2018 List     | Stock No. | Case Qty. |
|--|---------------------------------|--------|---------------|-----------|-----------|
| <b>47BT</b>  |                                 |        |               |           |           |
| Pull Plate   |                                 |        |               |           |           |
| Thumb Piece Passage                                  |                                 |        |               |           |           |
| Must specify handing                                 |                                 |        |               |           |           |
| Tactile Warning - add \$42.40 to list price of item. |                                 |        |               |           |           |
|  | 14                              | US32D  | 266.10        | 168977    | 6         |
| <b>47PT</b>  |                                 |        |               |           |           |
| Pull Plate   |                                 |        |               |           |           |
| Thumb Piece Entrance                                 |                                 |        |               |           |           |
| Must specify handing                                 |                                 |        |               |           |           |
| Tactile Warning - add \$40.00 to list price of item. |                                 |        |               |           |           |
|  | 05                              | US32D  | 266.10        | 159296    | 6         |
| <b>47PD</b>  |                                 |        |               |           |           |
| Pull Plate - Dummy Trim                              |                                 |        |               |           |           |
| Plated steel for ALM, DBZ, and US3.                  |                                 |        |               |           |           |
| Stainless steel for US32D.                           |                                 |        |               |           |           |
| Tactile Warning - add \$42.40 to list price of item. |                                 |        |               |           |           |
|  | 02                              | ALM    | 108.65        | 109019    | 12        |
|  | Pull when device is dogged down | DBZ    | 108.65        | 109020    | -         |
|  |                                 | US3    | 108.65        | 109021    | -         |
|  |                                 | US32D  | 108.65        | 109022    | -         |
| <b>47PN</b>  |                                 |        |               |           |           |
| Pull Plate - Night Latch                             |                                 |        |               |           |           |
| Requires a 3901 rim cylinder (sold separately).      |                                 |        |               |           |           |
| Includes retaining cup for 161 door prep.            |                                 |        |               |           |           |
| Plated steel for ALM, DBZ, and US3.                  |                                 |        |               |           |           |
| Stainless steel for US32D.                           |                                 |        |               |           |           |
| Tactile Warning - add \$42.40 to list price of item. |                                 |        |               |           |           |
|  | 03                              | ALM    | <b>125.10</b> | 109023    | 12        |
|  | Key retracts latchbolt          | DBZ    | 125.10        | 109026    | -         |
|  |                                 | US3    | 125.10        | 109027    | -         |
|  |                                 | US32D  | <b>125.10</b> | 109028    | -         |







| Description  |           | Finish | 2018 List    | Stock No. | Case Qty. |
|--|-----------|--------|--------------|-----------|-----------|
| <b>47RD</b><br>Raised Lip Pull - Dummy Trim<br>Plated steel for ALM, DBZ, and US3.<br>Stainless steel for US32D.<br>Tactile Warning - add \$42.40 to list price of item. | 02        | ALM    | 60.45        | 18956     | 12        |
|  | Pull when | DBZ    | 60.45        | 18949     |           |
|  | device is | US3    | 60.45        | 18934     |           |
|  | dogged    | US32D  | 60.45        | 18933     |           |
|  | down      |        |              |           |           |
| <b>47RN</b><br>Raised Lip Pull - Night Latch<br>Requires a 3901 rim cylinder (sold separately).<br>Tactile Warning - add \$42.40 to list price of item.                  | 03        | ALM    | <b>67.35</b> | 18914     | 12        |
|  | Key       | DBZ    | 67.35        | 18902     |           |
|  | retracts  | US3    | 67.35        | 18885     |           |
|  | latchbolt | US32D  | <b>67.35</b> | 18884     |           |
| <b>4910</b><br>Strike for use with 4700 Rim Exit Device<br>Included standard with device.  |           | US32D  | 67.35        | 20040     | 24        |
| <b>4911</b><br>Double door strike for 4700 Surface Vertical Rod and Rim Exit Device. Not for fire-rated door.<br>Optional - order separately.                            |           | DBZ    | 60.45        | 19301     | 24        |
|  |           | US3    | 60.45        | 19323     |           |
|  |           | US32D  | <b>60.45</b> | 19322     |           |
| <b>4913</b><br>Top strike for 4700 Surface Vertical Rod Exit Device<br>Included standard with device.  |           | US32D  | 42.95        | 16231     | 24        |
| <b>4914</b><br>Bottom strike for 4700 Surface Vertical Rod Exit Device<br>Included standard with device.   |           | US32D  | 42.95        | 16213     | 24        |
| <b>4915</b><br>Threshold strike for use with 4500 Series or 4700 Series. Not for fire-rated doors.<br>Optional order separately.   |           | US32D  | 24.95        | 67426     | 48        |
| <b>4917</b><br>Bottom Latch Assembly<br>Includes latch, cover and screws.<br>Included standard with device.  |           | ALM    | 63.10        | 56412     | 50        |
|  |           | DBZ    | 63.10        | 56401     |           |
|  |           | US3    | 63.10        | 56400     |           |
|  |           | US32D  | 63.10        | 56398     |           |
| <b>4918</b><br>Top Latch Assembly<br>Includes latch, cover and screws.<br>Included standard with device.   |           | ALM    | 63.10        | 56418     | 50        |
|  |           | DBZ    | 63.10        | 56410     |           |
|  |           | US3    | 63.10        | 56409     |           |
|  |           | US32D  | 63.10        | 56407     |           |
| <b>4919</b><br>Rod Replacement Kit (top or bottom)<br>Includes rod (47-1/4"), rod guide, rod connector assembly and all appropriate screws.                              |           | ALM    | 31.80        | 73587     | 24        |
|  |           | DBZ    | 31.80        | 73574     |           |
|  |           | US3    | 31.80        | 73568     |           |
|  |           | US32D  | 31.80        | 73530     |           |

1. Items with the price in **bold and red** are Quick Ship items and ship in 24 hours.  
Please use stock number when ordering. 2. U/M is each unless otherwise noted.



## Exit Devices - 4700



| Description   | Length | Finish | 2018 List | Stock No. | Case Qty. |
|---|--------|--------|-----------|-----------|-----------|
| <b>4931R</b><br>Shim Kit for 4700 Series Rim Device<br>Packaged 2 ea. 1/8" shims.<br>If using with 47BE, 47CE, 47NL trim, please specify thickness (door plus shim).                  |        | ALM    | 55.15     | 101773    | 24        |
|   |        | DBZ    | 55.15     | 101774    |           |
|   |        | US3    | 63.10     | 101775    |           |
|   |        | US32D  | 63.10     | 101776    |           |
| <b>4931S</b><br>Shim Kit for 4700 Series Surface Vertical Rod Device<br>Packaged 2 ea. 1/8" shims.<br>If using with 47BE, 47CE, 47NL trim, please specify thickness (door plus shim). |        | ALM    | 55.15     | 101783    | 24        |
|   |        | DBZ    | 55.15     | 101784    |           |
|   |        | US3    | 63.10     | 101786    |           |
|   |        | US32D  | 63.10     | 101787    |           |
| <b>4933R</b><br>Replacement Head Cover for 4700 Series Rim Device   |        | ALM    | 39.75     | 105050    | 20        |
|   |        | DBZ    | 39.75     | 105051    |           |
|   |        | US3    | 46.15     | 105052    |           |
|   |        | US32D  | 46.15     | 105053    |           |
| <b>4933S</b><br>Replacement Head Cover for 4700 Series SVR Device   |        | ALM    | 39.75     | 105054    | 20        |
|   |        | DBZ    | 39.75     | 105055    |           |
|   |        | US3    | 46.15     | 105056    |           |
|   |        | US32D  | 46.15     | 105057    |           |
| <b>4934</b><br>Replacement Dogging Plate for 4700 Series Panic Rated Device   | 36"    | ALM    | 31.80     | 105058    | 20        |
|   |        | DBZ    | 31.80     | 105059    |           |
|   |        | US3    | 31.80     | 105060    |           |
|   |        | US32D  | 31.80     | 105061    |           |
|   | 48"    | ALM    | 36.05     | 105062    | 20        |
|   |        | DBZ    | 36.05     | 105063    |           |
|   |        | US3    | 36.05     | 105064    |           |
|   |        | US32D  | 36.05     | 105065    |           |
| <b>4934F</b><br>Replacement Dogging Plate for 4700 Series Fire Rated Device   | 36"    | ALM    | 31.80     | 105066    | 20        |
|   |        | DBZ    | 31.80     | 105076    |           |
|   |        | US3    | 31.80     | 105068    |           |
|   |        | US32D  | 31.80     | 105069    |           |
|   | 48"    | ALM    | 36.05     | 105070    | 20        |
|   |        | DBZ    | 36.05     | 105071    |           |
|   |        | US3    | 36.05     | 105072    |           |
|   |        | US32D  | 36.05     | 105073    |           |
| <b>4936</b><br>24" Extension Rod Kit<br>Includes 24" extension rod, rod connector, rod guide, and wood and machine screws.<br>Fire rated up to 8' on Surface Vertical Rod device.     |        | ALM    | 28.10     | 129379    | 24        |
|   |        | DBZ    | 28.10     | 129380    |           |
|   |        | US3    | 29.15     | 129372    |           |
|   |        | US32D  | 29.15     | 129378    |           |
| <b>4937</b><br>36" Extension Rod Kit<br>Includes 36" extension rod, rod connector, rod guide, and wood and machine screws.<br>Fire rated up to 8' on Surface Vertical Rod device.     |        | ALM    | 31.80     | 129388    | 24        |
|   |        | DBZ    | 31.80     | 129389    |           |
|   |        | US3    | 32.90     | 129381    |           |
|   |        | US32D  | 32.90     | 129387    |           |
| <b>2-649-0010</b><br>Rod Guide Replacement  |        | US3    | 7.95      | 56131     |           |



| Description  | Function | Finish | 2018 List | Stock No. | Case Qty. |
|--|----------|--------|-----------|-----------|-----------|
| <b>2-649-0011</b><br>Rod Guide Replacement                                   |          | US32D  | 7.95      | 56026     |           |
| <b>2-649-0012</b><br>Rod Guide Replacement                                   |          | DBZ    | 7.95      | 56025     |           |
| <b>2-649-0013</b><br>Rod Guide Replacement                                   |          | ALM    | 7.95      | 56027     |           |
| <b>2-649-0014</b><br>Trim Handing Pin - 5 pack                               |          | -      | 7.95      | 52275     |           |
| <b>2-649-0021</b><br>Top Latch Cover   |          | ALM    | 34.45     | 56389     |           |
| <b>2-649-0022</b><br>Top Latch Cover   |          | DBZ    | 34.45     | 56388     |           |
| <b>2-649-0023</b><br>Top Latch Cover   |          | US3    | 34.45     | 56376     |           |
| <b>2-649-0024</b><br>Top Latch Cover   |          | US32D  | 34.45     | 56375     |           |
| <b>2-649-0025</b><br>Bottom Latch Cover                                      |          | ALM    | 34.45     | 56331     |           |
| <b>2-649-0026</b><br>Bottom Latch Cover                                      |          | DBZ    | 34.45     | 56328     |           |
| <b>2-649-0027</b><br>Bottom Latch Cover                                      |          | US3    | 34.45     | 56319     |           |
| <b>2-649-0028</b><br>Bottom Latch Cover                                      |          | US32D  | 34.45     | 56296     |           |
| <b>2-649-0095</b><br>SVR Screwpack - Latch, rod, rod connector,<br>rod guide |          | ALM    | 7.95      | 103572    |           |
| <b>2-649-0096</b><br>SVR Screwpack - Latch, rod, rod connector,<br>rod guide |          | DBZ    | 7.95      | 103573    |           |
| <b>2-649-0097</b><br>SVR Screwpack - Latch, rod, rod connector,<br>rod guide |          | US3    | 7.95      | 103574    |           |
| <b>2-649-0098</b><br>SVR Screwpack - Latch, rod, rod connector,<br>rod guide |          | US32D  | 7.95      | 103575    |           |
| <b>2-649-0099</b><br>SVR Screwpack - Top and bottom strike                   |          | -      | 4.80      | 103576    |           |
| <b>2-649-0100</b><br>Screwpack - Chassis, end cap, head cover, rim strike    |          | ALM    | 13.80     | 103577    |           |
| <b>2-649-0101</b><br>Screwpack - Chassis, end cap, head cover, rim strike    |          | DBZ    | 13.80     | 103578    |           |
| <b>2-649-0102</b><br>Screwpack - Chassis, end cap, head cover, rim strike    |          | US3    | 13.80     | 103579    |           |



1. Items with the price in **bold and red** are Quick Ship items and ship in 24 hours.  
Please use stock number when ordering. 2. U/M is each unless otherwise noted.



## Exit Devices - 4700

| Description   | Function | Finish | 2018 List | Stock No. | Case Qty. |
|---|----------|--------|-----------|-----------|-----------|
| <b>2-649-0103</b><br>Screwpack - Chassis, end cap, head cover, rim strike |          | US32D  | 13.80     | 103580    |           |
| <b>2-649-0141</b><br>Screwpack - 2" thick door, trim                      |          | -      | 2.65      | 103606    |           |
| <b>2-649-0142</b><br>Screwpack - 2-1/4" thick door, trim                  |          | -      | 2.65      | 103607    |           |
| <b>2-649-0144</b><br>End Cap Replacement Pack                             |          | ALM    | 17.00     | 104043    |           |
| <b>2-649-0145</b><br>End Cap Replacement Pack                             |          | DBZ    | 17.00     | 104044    |           |
| <b>2-649-0146</b><br>End Cap Replacement Pack                             |          | US3    | 17.00     | 104045    |           |
| <b>2-649-0147</b><br>End Cap Replacement Pack                             |          | US32D  | 17.00     | 104046    |           |
| Note: All end caps come with bracket and fasteners                        |          |        |           |           |           |
| <b>2-649-0164</b><br>Pack of 8 Screws, trim (4700), 1/4 - 20 x 3/4" PHMS  |          | -      | 7.95      | 112534    |           |
| <b>2-649-0177</b><br>Rod to Rod Connector                                 |          | US3    | 7.95      | 129398    |           |
| <b>2-649-0183</b><br>Rod to Rod Connector                                 |          | US32D  | 7.95      | 129404    |           |
| <b>2-649-0184</b><br>Rod to Rod Connector                                 |          | ALM    | 7.95      | 129405    |           |
| <b>2-649-0185</b><br>Rod to Rod Connector                                 |          | DBZ    | 7.95      | 129406    |           |
| <b>2-649-0406</b><br>45PN/47PN Cylinder Cup Spacer                        |          | -      | 8.50      | 182414    |           |
| <b>2-649-4703</b><br>Hex Key for Dogging 3/16"<br>10 pack                 |          | -      | 5.85      | 315       |           |





| Description   | Function | Finish | 2018 List      | Stock No. | List Fire Rated | Stock No. | Case Qty. |
|---|----------|--------|----------------|-----------|-----------------|-----------|-----------|
| <b>4900U</b><br>Non-Keyed Removable Mullion Set<br>11 Gauge Steel Tube, top bracket/<br>bottom bracket set<br>Fire rated mullion requires a fire rated<br>strike (sold separately).   | 7'       | USP    | <b>501.40</b>  | 133007    | 749.95          | 133010    | 1         |
|   | 8'       | USP    | 501.40         | 133008    | 749.95          | 133011    | 1         |
|   | 10'      | USP    | 625.40         | 133009    |                 | -         | 1         |
| <hr/>   |          |        |                |           |                 |           |           |
| <b>4904</b><br>Top/Bottom Bracket Set<br>Removable (Non-Keyed)  |          | -      | 219.95         | 133029    | 270.30          | 133031    | 5         |
| <hr/>   |          |        |                |           |                 |           |           |
| <b>4905</b><br>Mullion Tube (Non-Keyed)<br>11 Gauge Steel   | 7'       | USP    | 321.75         | 133032    |                 | -         | 1         |
|   | 8'       | USP    | 321.75         | 133033    |                 | -         | 1         |
|   | 10'      | USP    | 398.60         | 133034    |                 | -         | 1         |
| <hr/>   |          |        |                |           |                 |           |           |
| <b>4912</b><br>Fire rated strike for use with 4500 Series and 4600<br>Series Fire Rated Exit Device and Mullion   |          | US32D  |                | -         | 137.80          | 16232     | 24        |
| <hr/>   |          |        |                |           |                 |           |           |
| <b>4916</b><br>Fire rated strike for use with 4700 Series Fire Rated Exit<br>Device and Mullion   |          | US32D  |                | -         | 137.80          | 115780    | 24        |
| <hr/>   |          |        |                |           |                 |           |           |
| <b>4953</b><br>Mullion Stabilizer for use with 4900 Series Non-Keyed<br>and Keyed Removable Mullion   |          | US32D  |                | -         | 54.10           | 139749    | 12        |
| <hr/>   |          |        |                |           |                 |           |           |
| <b>4900T</b><br>Keyed Removable Mullion Set<br>11 gauge steel tube, top bracket/<br>bottom bracket set.<br><br>Requires a 3901 rim cylinder<br>(sold separately).<br><br>Fire rated mullion requires a fire rated<br>strike<br>(sold separately). | 7'       | USP    | <b>1034.05</b> | 132391    | 1,223.80        | 132393    | 1         |
|   | 8'       | USP    | 1034.05        | 132392    | 1,223.80        | 132394    | 1         |
|   | 10'      | USP    | 1192.00        | 132390    |                 | -         | 1         |

1. Items with the price in **bold and red** are Quick Ship items and ship in 24 hours.  
Please use stock number when ordering. 2. U/M is each unless otherwise noted.



## Exit Devices - 4700



| Description   | Function | Finish | 2018 List | Stock No. | List Fire Rated | Stock No. | Case Qty. |
|---|----------|--------|-----------|-----------|-----------------|-----------|-----------|
| <b>4902</b><br>Top/Bottom Bracket Set<br>Key Removable  |          | -      | 635.50    | 45351     | 787.05          | 31750     | 5         |
| Requires a 3901 rim cylinder (sold separately).   |          |        |           |           |                 |           |           |
| <b>4907</b><br>Mullion Tube (Key Removable)<br>11 Gauge Steel   | 7'       | USP    | 428.80    | 45349     |                 | -         | 1         |
|   | 8'       | USP    | 428.80    | 45334     |                 | -         | 1         |
|   | 10'      | USP    | 557.60    | 45323     |                 | -         | 1         |
| <b>4912</b><br>Fire rated strike for use with 4500 Series and 4600 Series Fire Rated Device and Mullion   |          | US32D  |           | -         | 137.80          | 16232     | 24        |
| <b>4916</b><br>Fire rated strike for use with 4700 Series Fire Rated Exit Device and Mullion  |          | US32D  |           | -         | 137.80          | 115780    | 24        |
| <b>4953</b><br>Mullion Stabilizer for use with 4900 Series Non-Keyed and Keyed Removable Mullion  |          | US32D  |           | -         | 54.10           | 139749    | 12        |
| <b>3901</b><br>Rim Cylinder<br>Fixed cylinder and Small Format Interchangeable Core housing available (SFIC cores sold separately). Dummy rim cylinders also available. |          | US3    | 48.50     |           |                 |           | 1         |
|   |          | US4    | 51.55     |           |                 |           |           |
|   |          | US10   | 51.55     |           |                 |           |           |
|   |          | US10B  | 48.50     |           |                 |           |           |
|   |          | US26   | 48.50     |           |                 |           |           |
|   |          | US26D  | 48.50     |           |                 |           |           |
| Shipped standard with long break-off tailpiece.   |          |        |           |           |                 |           |           |
| Specify 6-pin or 7-pin for SFIC housing.  |          |        |           |           |                 |           |           |
| For additional cylinder information, please refer to the Locks section.   |          |        |           |           |                 |           |           |





| Description   | Function | Finish | 2018 List | Stock No. | Case Qty. |
|---|----------|--------|-----------|-----------|-----------|
| <b>3902</b><br>Mortise Cylinder<br>Fixed cylinder and Small Format Interchangeable Core housing available (SFIC cores sold separately). Dummy mortise cylinders also available. |          | US3    | 48.50     |           | 1         |
|   |          | US4    | 51.55     |           |           |
|   |          | US10   | 51.55     |           |           |
|   |          | US10B  | 48.50     |           |           |
|   |          | US26   | 48.50     |           |           |
|   |          | US26D  | 48.50     |           |           |
| Shipped with Schlage C keyway, standard cam attached, and Adams Rite cam loose in box.  |          |        |           |           |           |
| Specify length 1-1/8" or 1-1/4" for fixed cylinder or 1-1/4" (6-pin) or 1-3/8" (7-pin) for SFIC housing and cam required.   |          |        |           |           |           |
| For mortise exit device trim specify 1-5/8" with standard cam for fixed cylinder (Schlage C Keyway) or SFIC housing.  |          |        |           |           |           |
| For mortise exit device x cylinder/optional pull, use 1-3/8" cylinder with 11/16" cylindrical collar.   |          |        |           |           |           |
| For additional cylinder information, please refer to the Locks section.   |          |        |           |           |           |
| <b>2-649-0137</b><br>Retaining Cup<br>For use with Rim cylinder and 161 prep  |          | NF     | 9.55      | 103365    |           |
| <b>2-649-0045</b><br>7/16" Cylinder Collar (4500 Pull Plate Trim)   |          | US3    | 19.10     | 3404      |           |
| <b>2-649-0046</b><br>7/16" Cylinder Collar (4500 Pull Plate Trim)   |          | US4    | 19.10     | 3395      |           |
| <b>2-649-0047</b><br>7/16" Cylinder Collar (4500 Pull Plate Trim)   |          | US10   | 19.10     | 3394      |           |
| <b>2-649-0048</b><br>7/16" Cylinder Collar (4500 Pull Plate Trim)   |          | US10B  | 19.10     | 3393      |           |
| <b>2-649-0050</b><br>7/16" Cylinder Collar (4500 Pull Plate Trim)   |          | US26   | 19.10     | 3386      |           |
| <b>2-649-0051</b><br>7/16" Cylinder Collar (4500 Pull Plate Trim)   |          | US26D  | 19.10     | 3384      |           |
| <b>2-649-0052</b><br>7/16" Cylinder Collar (4500 Pull Plate Trim)   |          | US32D  | 19.10     | 3381      |           |
| Note: For use with 1-1/8" mortise cylinders<br>Note: All cylinder collars come with wave washer and spacer  |          |        |           |           |           |
| <b>2-649-0053</b><br>11/16" Cylinder Collar (4500 Escutcheon Trim)  |          | US3    | 19.10     | 3380      |           |
| <b>2-649-0054</b><br>11/16" Cylinder Collar (4500 Escutcheon Trim)  |          | US4    | 19.10     | 3357      |           |
| <b>2-649-0055</b><br>11/16" Cylinder Collar (4500 Escutcheon Trim)  |          | US10   | 19.10     | 3346      |           |
| <b>2-649-0056</b><br>11/16" Cylinder Collar (4500 Escutcheon Trim)  |          | US10B  | 19.10     | 3340      |           |
| <b>2-649-0057</b><br>11/16" Cylinder Collar (4500 Escutcheon Trim)  |          | US26   | 19.10     | 3339      |           |



1. Items with the price in **bold and red** are Quick Ship items and ship in 24 hours.  
Please use stock number when ordering. 2. U/M is each unless otherwise noted.



## Exit Devices - 4700



| Description  | Finish | 2018 List | Stock No. | Case Qty. |
|--|--------|-----------|-----------|-----------|
| <b>2-649-0058</b><br>1 1/16" Cylinder Collar (4500 Escutcheon Trim)  | US26D  | 19.10     | 3335      |           |
| <b>2-649-0059</b><br>1 1/16" Cylinder Collar (4500 Escutcheon Trim)  | US32D  | 19.10     | 3334      |           |
| Note: For use with 1-1/4" or 1-3/8" mortise cylinders<br>Note: All cylinder collars come with wave washer and spacer |        |           |           |           |
| <b>2-647-0012</b><br>7/8" Cylinder Collar - 5, 6, 7 pin<br>(4700 Escutcheon Trim)                                    | US3    | 19.10     | 31809     |           |
| <b>2-647-0013</b><br>7/8" Cylinder Collar - 5, 6, 7 pin<br>(4700 Escutcheon Trim)                                    | ALM    | 19.10     | 31804     |           |
| <b>2-647-0014</b><br>7/8" Cylinder Collar - 5, 6, 7 pin<br>(4700 Escutcheon Trim)                                    | DBZ    | 19.10     | 31793     |           |
| <b>2-647-0015</b><br>7/8" Cylinder Collar - 5, 6, 7 pin<br>(4700 Escutcheon Trim)                                    | US32D  | 19.10     | 31789     |           |
| Note: For use with 1-1/8" mortise cylinders<br>Note: All cylinder collars come with wave washer and spacer           |        |           |           |           |

