

BALDWIN®

LEVERS

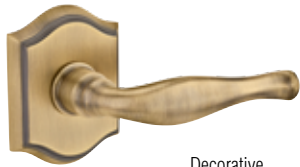


RESERVE™

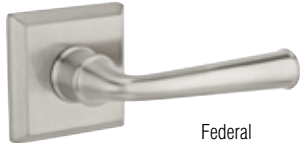
LEVERS



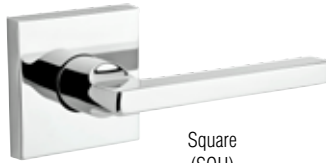
Curve
(CUR)



Decorative
(DEC)



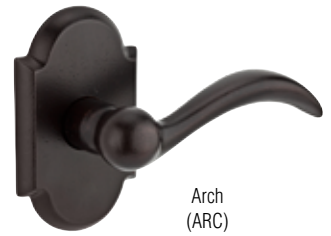
Federal
(FED)



Square
(SQU)



Tube
(TUB)



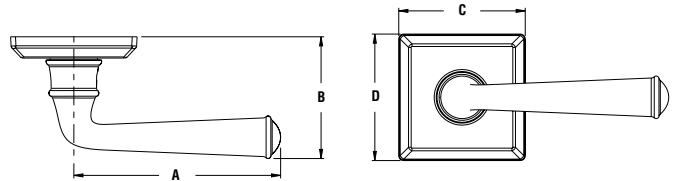
Arch
(ARC)



Taper
(TAP)

LEVER SPECIFICATIONS

Door Preparation	2-1/8" cross bore. 1" edge bore for latch.
Door Thickness	1-3/8" to 2" standard. Thick door optional for doors up to 2-1/2".
Cylinder	Baldwin 5-pin C-Keyway.
Backset	Adjustable 2-3/8" or 2-3/4".
Front & Latch	Square Corner Adjustable (SL) standard. Round Corner (RL), Drive In (DL), or 6 Way Adjustable (6L) optional.
Strike	Square Corner (SS) standard. Round Corner (RS), or Dual Strike (DS) optional. Extended Lip strike shipped with all thick door locks (ES).
Latch Bolt	1/2" passage/privacy/entry function bolt.
Handing	With exception to half dummy function, all levers are reversible for right or left hand doors.
ANSI/BHMA	Tested to exceed ANSI/BHMA Grade 2 security.
ADA	Passage levers meet ADA requirements.
UL	20-minute certified UL option available.



LEVER DIMENSIONS

	CUR	DEC	FED	SQU	TUB	ARC	TAP
A	3-31/32"	4-1/4"	4-1/4"	4-1/4"	4-1/4"	4-1/2"	4-1/4"
B	2-17/32"	2-3/4"	2-1/2"	2-3/8"	2-9/32"	2-9/16"	2-7/16"
B (Keyed)	2-13/32"	2-9/16"	2-9/16"	2-3/16"	2-3/16"	2-3/8"	2-1/4"

ROSE DIMENSIONS

	TAR	TRR	TSR	CRR	CSR	RAR	RSR
C	2-21/32"	2-9/16"	2-19/32"	2-9/16"	2-9/16"	2-11/16"	2-5/8"
D	3-7/16"	2-9/16"	2-19/32"	2-9/16"	2-9/16"	4-1/2"	4"

FINISH AVAILABILITY

	003	049	112	150	152	260	481	492
CUR	•	•	•	•	•	•		
DEC	•	•	•	•	•	•		
FED	•	•	•	•	•	•		
SQU			•	•	•	•		
TUB			•	•	•	•		
ARC							•	•
TAP							•	•

FUNCTIONS



Passage
(PS)



Privacy
(PV)



Keyed Entry
(EN)

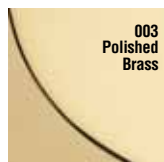


Full Dummy
(FD)



Half Dummy
(HD)

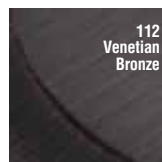
FINISHES



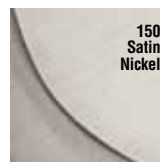
003
Polished
Brass



049
Matte Brass
& Black



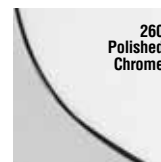
112
Venetian
Bronze



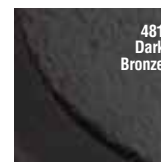
150
Satin
Nickel



152
Matte Antique
Nickel



260
Polished
Chrome



481
Dark
Bronze



492
White
Bronze

LIMITED LIFETIME MECHANICAL • 25-YEAR FINISH WARRANTY

BALDWIN

19701 DA VINCI • LAKE FOREST • CALIFORNIA • 92610
1.800.437.7448 • BALDWINHARDWARE.COM