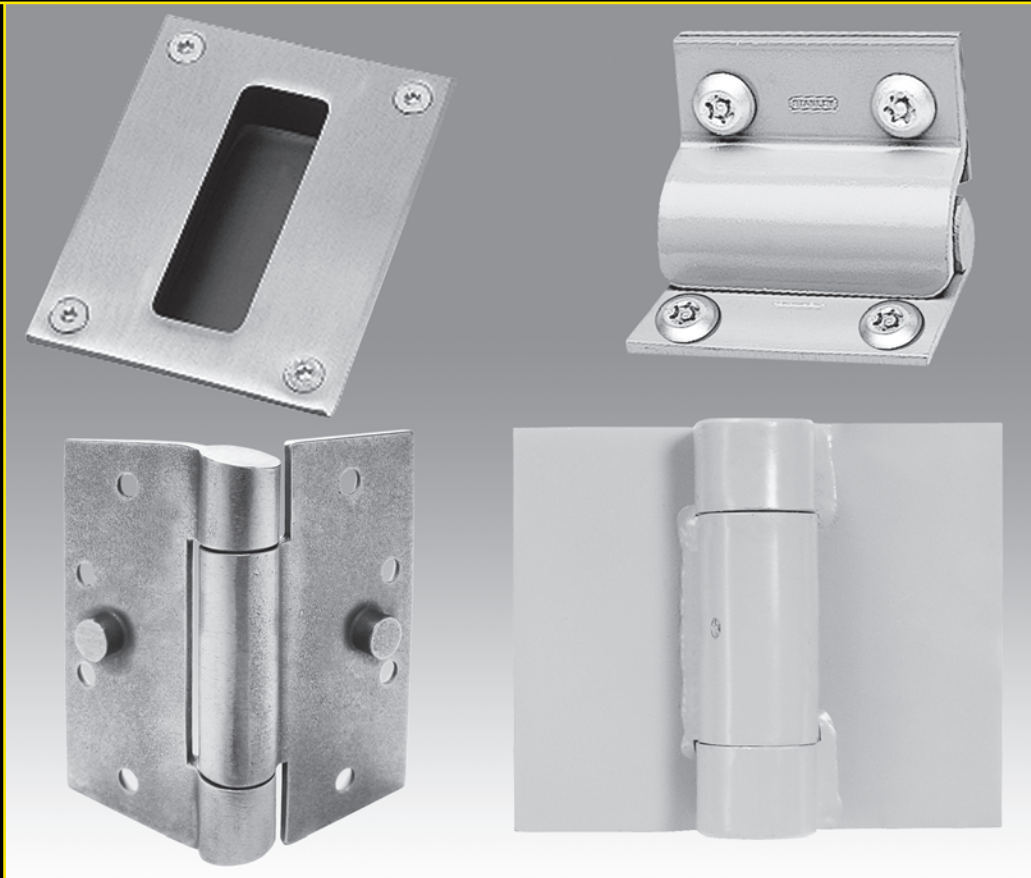


**STANLEY**<sup>®</sup>  
Security Solutions



**DETENTION**

HARDWARE

**STANLEY**<sup>®</sup>

TABLE OF CONTENTS	Page
Company history .....	2
Institutional hospital tip prison hinges .....	3-5
Double weight hinges .....	6
Triple weight hinges .....	7
Food pass cuff port hinges .....	8
Detention stops .....	9
Pulls and handles .....	10

**COMPANY HISTORY**



**The Stanley Works  
New Britain, CT in 1843**

As a young man in 1843, Frederick T. Stanley founded The Stanley Works – a small company located in New Britain, Connecticut that manufactured hinges, bolts and other door hardware in a one-story wooden building.

Mr. Stanley’s vision was to create a hardware company with unsurpassed customer service, product innovation and integrity – and to offer products that would become the first choice among professionals around the world.

With the early success of this mission and an increasing demand for his high-quality goods, Mr. Stanley began exporting his products in the 1870s.

Today, Stanley is a global organization supplying hardware and tools for the architectural, consumer, industrial and residential markets worldwide. Utilizing state-of-the-art research, manufacturing and quality-control capabilities, Stanley continues to deliver the innovative, high quality products that have made the Stanley name synonymous with the highest craftsmanship and dependability for more than 165 years.

To our valued customers, we appreciate your loyalty over the years and proudly present our Architectural Hardware offering.

Commercial Customer Service: 1-800-337-4393  
www.stanleyhardware.com

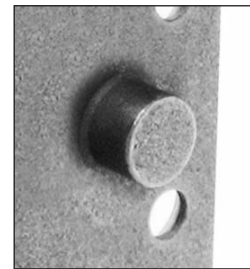


Heavy Weight Concealed Bearing Prison Hinges **LifeSpan®**

**IHTCB1995** – (ANSI A5111) – 3 knuckle – full mortise – stainless steel – satin finish (32D)

- Specially designed for detention facilities
- Investment cast 304 stainless steel
- Available with or without shear resistant stud (SRS)
- LifeSpan® limited lifetime warranty
- Concealed Lifestan® bearing for trouble free, long life – no oil, no grease, no maintenance
- Heavy weight gauges increase available bearing surface area for maximum friction reduction
- Stainless steel, hardened, free turning, completely concealed pin

Hinges can be furnished as follows:  
 with concealed switch (CS)  
 with shear resistant studs (SRS)



Shear Resistant Stud

Size Open		Gauge of Metal		Number of Flat Head Security Machine Screws Per Hinge	Quantity		Carton Weight	
Inches	(mm)	Inches	(mm)		Per Box	Per Carton	Lbs.	(KG)
4 1/2"	114	.188	(4.8)	8 - 1/4-20 x 1/2	3 EA.	30 EA.	46	(20.9)

**Suggested Specifications**

Institutional type hinges should be fabricated from investment cast stainless steel. All dimensions as to size, thickness, and screw holes shall conform to ANSI-A156.7 "Standard for Template Hinge Dimensions". Both lateral and vertical loads will be accommodated by bearings which include anti-friction, self-lubricating materials. Pins shall be non-removable. The top and bottom ends of the hinge barrel shall be contoured to a uniform slope.

Hinges shall be tested to cycle a 300 lbs. (136 Kg) door a minimum of 2,500,000 times, (0°- 90°- 0°), installed in accordance with ANSI-156.1 type test fixtures. Vertical wear shall not exceed .030" (.76mm) and lateral wear shall not exceed .060" (1.5mm).

All hinges shall be subjected to a Door Impact Test in accordance with ASTM F1758-96 Standard Test Method for Detention Hinges used on Detention-Grade Swinging Doors. They shall be capable of withstanding 200 repetitive blows of 200 foot pounds. (271.2-J) of force delivered on the door within 6" (152mm) of each hinge.

**DETENTION HARDWARE**

**Heavy Weight Concealed Bearing Prison Hinges** LifeSpan®

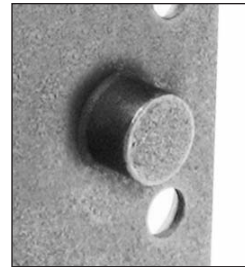
**IHTCB1901R** – (ANSI A8111) – 3 knuckle – full mortise – steel – phosphated and painted

**IHTCB1961R** – (ANSI A5111) – 3 knuckle – full mortise – stainless steel – satin finish (32D)

- Specially designed for detention facilities
- LifeSpan® limited lifetime warranty
- Concealed Lifestan® bearing for trouble free, long life – no oil, no grease, no maintenance
- Sloped ends deter hangings
- Stainless steel, hardened, free turning, completely concealed pin
- Heavy weight gauges increase available bearing surface area for maximum friction reduction

Hinges can be furnished as follows:

- with concealed switch (CS)
- with current conducting feature (CE)
- with shear resistant studs (SRS)
- with 1/4-20 punching



Shear Resistant Stud

Size Open		Gauge of Metal		Number of Flat Head Security Screws Per Hinge		Quantity		Carton Weight	
Inches	(mm)	Inches	(mm)	Machine	Wood	Per Box	Per Carton	Lbs.	(KG)
4 1/2" x 4 1/2"	(114 x 114)	.180	(4.6)	8 - 12-24 x 1/2	8 - 12 x 1 1/4	3 EA.	36 EA.	54	(24.5)
5" x 4 1/2"	(127 x 114)	.190	(4.8)	8 - 12-24 x 1/2	8 - 12 x 1 1/4	3 EA.	24 EA.	42	(19)

**Suggested Specifications**

Institutional type hinges should be fabricated from wrought steel or stainless steel. All dimensions as to size, thickness, and screw holes shall conform to ANSI-A156.7 "Standard for Template Hinge Dimensions". Both lateral and vertical loads will be accommodated by bearings which include anti-friction, self-lubricating materials. Pins shall be non-removable. The top and bottom ends of the hinge barrel shall be contoured to a uniform slope.

Hinges shall be tested to cycle a 300 lbs. (136 Kg) door a minimum of 2,500,000 times, (0°- 90°- 0°), installed in accordance with ANSI-156.1 type test fixtures. Vertical wear shall not exceed .030" (.76mm) and lateral wear shall not exceed .060" (1.5mm).

All hinges shall be subjected to a Door Impact Test in accordance with ASTM F1758-96 Standard Test Method for Detention Hinges Used on Detention-Grade Swinging Doors. They shall be capable of withstanding 200 repetitive blows of 200 foot pounds. (271.2-J) of force delivered on the door within 6" (152mm) of each hinge.

# Heavy Weight Concealed Bearing Prison Hinges **LifeSpan**<sup>®</sup>

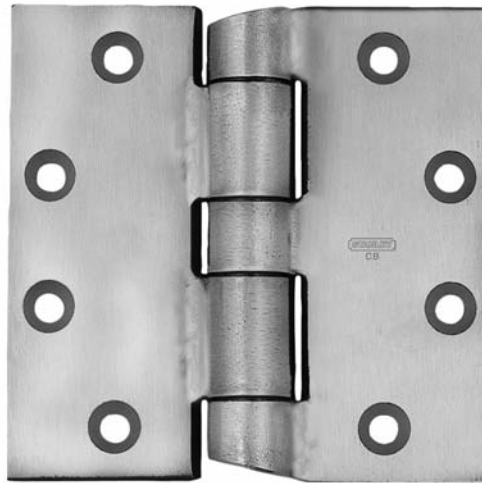
**IHTCB168** – (ANSI A8111) – 5 knuckle – full mortise – steel – phosphated and painted, or polished and plated

**IHTCB199** – (ANSI A5111) – 5 knuckle – full mortise – stainless steel – satin finish (32D)

- Specially designed for detention facilities
- LifeSpan<sup>®</sup> limited lifetime warranty
- Concealed Lifestan<sup>®</sup> bearing for trouble free, long life – no oil, no grease, no maintenance
- Sloped ends deter hangings
- Stainless steel, hardened, and completely concealed pin
- Heavy weight gauges increase available bearing surface area for maximum friction reduction
- Steel based painted hinges and stainless steel hinges are fully welded
- Steel based plated hinges are cross pinned, top and bottom

Hinges can be furnished as follows:

- with concealed switch (CS)
- with current conducting feature (CE)
- with shear resistant studs (SRS)
- with 1/4-20 punching



Shear Resistant Stud

Size Open		Gauge of Metal		Number of Flat Head Security Screws Per Hinge		Quantity		Carton Weight	
Inches	(mm)	Inches	(mm)	Machine	Wood	Per Box	Per Carton	Lbs.	(KG)
4 1/2" x 4 1/2"	(114 x 114)	.180	(4.6)	8 - 12-24 x 1/2"	8 - 12 x 1 1/4"	3 EA.	36 EA.	54	(24.5)
5" x 4 1/2"	(127 x 114)	.190	(4.8)	8 - 12-24 x 1/2"	8 - 12 x 1 1/4"	3 EA.	24 EA.	42	(19)

## Suggested Specifications

Institutional type hinges should be fabricated from wrought steel or stainless steel. All dimensions as to size, thickness, and screw holes shall conform to ANSI-A156.7 "Standard for Template Hinge Dimensions". Both lateral and vertical loads will be accommodated by bearings which include anti-friction, self-lubricating materials. Pins shall be non-removable. The top and bottom ends of the hinge barrel shall be contoured to a uniform slope.

Hinges shall be tested to cycle a 300 lbs. (136 Kg) door a minimum of 2,500,000 times, (0°-90°-0°), installed in accordance with ANSI-156.1 type test fixtures. Vertical wear shall not exceed .030" (.76mm) and lateral wear shall not exceed .060" (1.5mm).

All hinges shall be subjected to a Door Impact Test in accordance with ASTM F1758-96 Standard Test Method for Detention Hinges Used on Detention-Grade Swinging Doors. They shall be capable of withstanding 200 repetitive blows of 200 foot pounds. (271.2-J) of force delivered on the door within 6" (152mm) of each hinge.

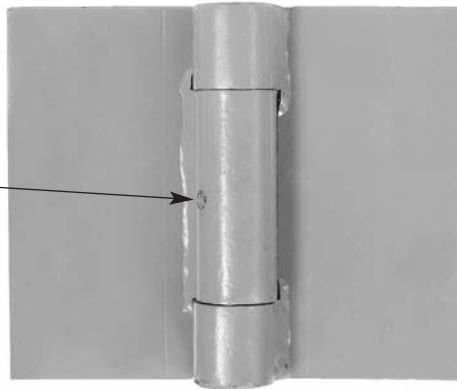
**DETENTION HARDWARE**

**Double Weight Concealed Ball Bearing Prison Hinges**

**BB855 – (ANSI A8381) – steel with welded pin. Phosphated and prime coated for painting**

- For lead-lined doors to x-ray rooms and other exceptionally heavy doors
- Made of double weight steel capable of carrying doors weighing up to 800 lbs. (363 Kg)  
(Based on a 3' x 7' door with 3 hinges)
- Each of the 2 concealed hardened steel races contains sixteen 1/8" (3.2mm) hardened and ground steel balls which are assembled within a jacket
- Concealed bearings are well lubricated insuring smooth, long lasting operation
- Rolled knuckles are welded and machined
- Typically made not swaged, no holes (application A) for full surface applications, or for full mortise (applications C) application. All other configurations are made to order

Provision has been made in the barrel of hinge for forced lubrication if further lubrication is necessary



**TYPICAL APPLICATIONS OF BB855**

<p>Regularly furnished blank no holes, not swaged for <b>Full Surface – application A</b></p>	<p><b>Full Surface with holes to template – application B</b></p>
<p><b>Full Mortise – applications</b></p> <p>Application C Not Swaged      Application D Swaged      Application E Special Swaged</p> <p>For all full mortise applications the center of barrel should be set 7/8" (22.2 mm) from door and frame so welded joints will clear. Leaves can be swaged apart any distance between 1/16" (1.6 mm) to 9/16" (14.3 mm)</p>	<p><b>Half Mortise</b></p> <p>Application F Half mortise      Application G Half mortise</p> <p>Variations of half mortise or half surface types can be obtained by further bumping or swaging of mortise leaf to accommodate any required construction. Specify hand when ordering</p>

Furnished on order with holes and with machine screws, at additional cost.  
When screw holes are required they are accurately punched to template.  
If above details do not show your particular construction submit details and specifications.

No holes, not swaged for applications "A" or "C"	Catalog Number	USP/EDP Number	Length of Joint	Width Open	Gauge of Metal	Diameter of Pin	Quantity Per Carton	Carton Weight
	Inches (mm)	Inches (mm)	Inches (mm)	Inches (mm)	Inches (mm)	Inches (mm)	Lbs. (Kg)	
BB855	02 9468	5 (127)	6 (152)	9/32 (7.1)	1/2 (12.7)	2 Ea.	7 (3.2)	



### Triple Weight Concealed Ball Bearing Prison Hinges

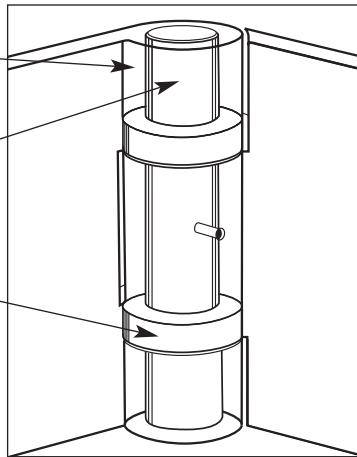
**BB852 – (ANSI A8391)** – steel with welded pin. Phosphated and prime coated for painting

- For lead-lined doors to x-ray rooms and extremely heavy doors and gates
- For hinged cell-front doors and grated steel doors of penitentiaries, jails, reformatories, etc.
- Made of triple weight steel capable of carrying doors weighing up to 2000 lbs. (906 Kg)  
(Based on a 3' x 7' door with 3 hinges)
- Each of the 2 concealed hardened steel races contains sixteen 3/16" (4.8mm) hardened and ground steel balls which are assembled within a jacket
- Provision has been made in the barrel of the hinge for forced lubrication if further lubrication is necessary
- Typically made not swaged, no holes (application A) for full surface applications, or for full mortise (applications C) application. All other configurations are made to order

Rolled knuckles are welded and machined.

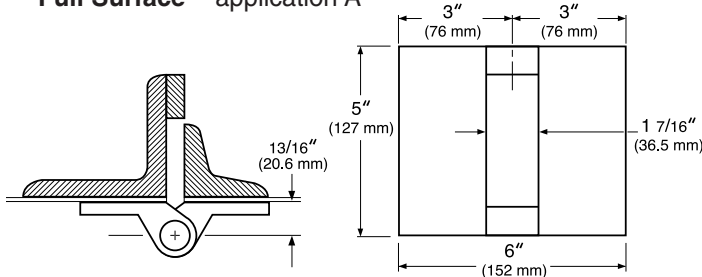
Pin is solid one piece steel welded at both ends making pin removal impossible.

Two concealed bearing assemblies. Hardened race-ways. Hardened and ground balls.

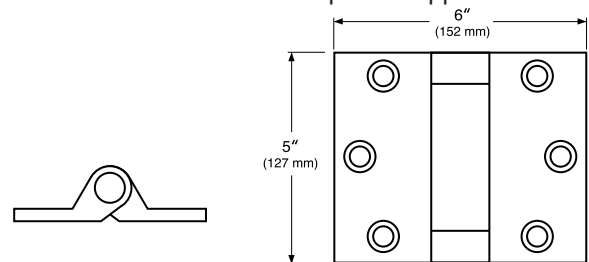


#### TYPICAL APPLICATIONS OF BB852

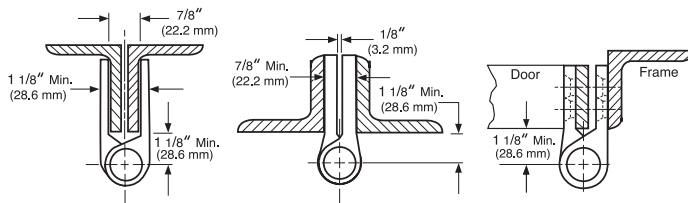
Regularly furnished blank no holes, not swaged for **Full Surface – application A**



**Full Surface with holes to template – application B**



**Full Mortise – applications**

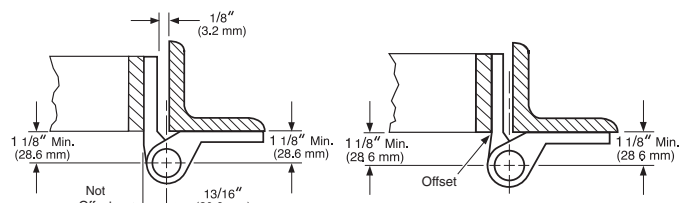


Application C  
Not swaged

Application D  
Swaged

Application E  
Special swaged

**Half Mortise**



Application F  
Half mortise

Application G  
Half mortise

For all full mortise applications the center of barrel should be set 1 1/8" (28.6 mm) from door and frame so welded joints will clear. Leaves can be swaged apart any distance between 1/8" (3.2 mm) to 7/8" (22.2 mm)

Variations of half mortise or half surface types can be obtained by further bumping or swaging of mortise leaf to accommodate any required construction. Specify hand when ordering

Furnished on order with holes and with machine screws, at additional cost.  
If above details do not show your particular construction submit details and specifications.

No holes, not swaged for applications "A" or "C"	Catalog Number	USP/EDP Number	Length of Joint		Width Open		Gauge of Metal		Diameter of Pin		Quantity Per Carton	Carton Weight	
			Inches	(mm)	Inches	(mm)	Inches	(mm)	Inches	(mm)		Lbs.	(Kg)
	BB852	02 9388	5	(127)	6	(152)	3/8	(9.5)	3/4	(19.1)	2 Ea.	10	(4.5)

**DETENTION HARDWARE**

**Food Pass Cuff Port Hinges**

**854** – Hinge with stop – phosphated and prime coated for painting

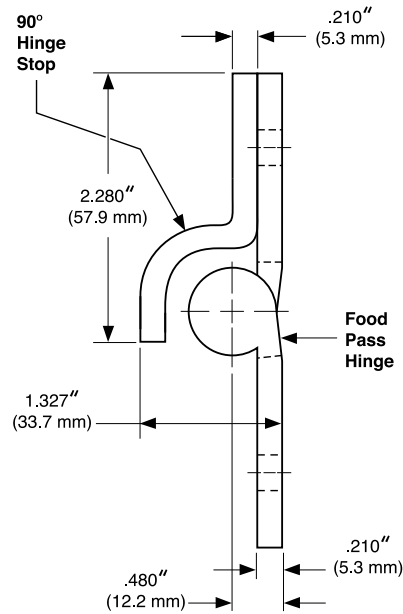
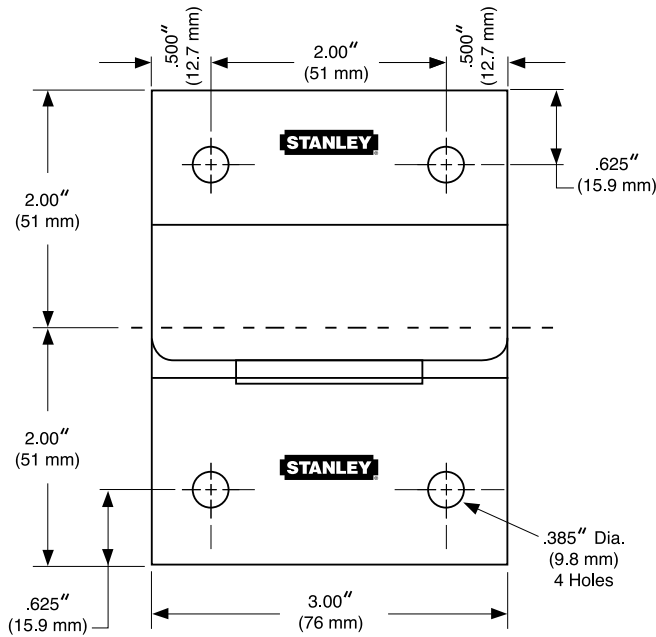
- Used on smaller doors installed into main doors to permit passage of food trays. Stop holds a small door at 90° forming a shelf
- Allow guards to apply manacles with cell doors closed
- No sharp projections
- Heavy gauge steel
- Replaces existing hinges with dangerous projecting stops
- Ends of the hinge barrels are solid, without visible pin lines



Hinge only (with or without holes) consult factory



854 Hinge with stop



854 EDP Number	Hinge Height		Hinge Width		Gauge of Metal		Pin Diameter		Number of 16 x 3/8" Torx Button Head Bolts Per Set	Quantity Per Box	Quantity Per Carton	Carton Weight	
	Inches	(mm)	Inches	(mm)	Inches	(mm)	Inches	(mm)				LBS.	(Kg)
02-9377	3	(76)	4	(102)	.210	(5.3)	.388	(9.9)	8	1 Set	12 Sets	40	(18)

Set consists of 2 each hinges and 2 each 90° stops.

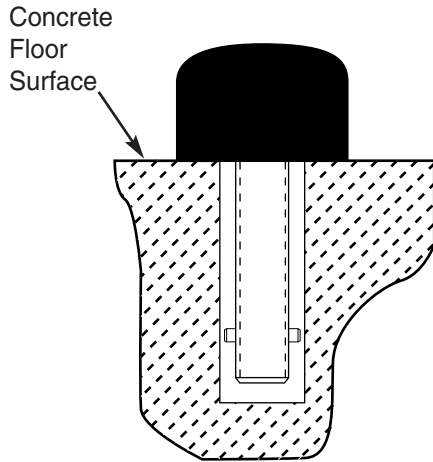




### Heavy Duty Detention Floor Stops

#### 3001 – Black neoprene floor stop

- Meets industry standard for 300 pound impact testing
- 90 Durometer
- Steel anchor post  $\frac{5}{8}$ " diameter x 2  $\frac{1}{2}$ " long
- For concrete floors in security applications

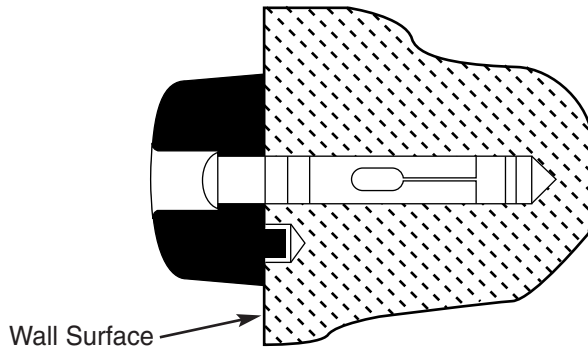


3001 EDP Number	Diameter		Height		Steel Anchor Post		Quantity Per Carton	Carton Weight	
	Inches	(mm)	Inches	(mm)	Inches	(mm)		LBS.	(Kg)
81 – 1000	2"	(51)	1 $\frac{1}{2}$ "	(38)	$\frac{5}{8}$ " x 2 $\frac{1}{2}$ "	(15.9 x 63.5)	25	15	(6.8)

### Heavy Duty Wall Stops

#### 3002– Black neoprene wall stop

- Unique designed molded anti-rotational post resists unauthorized removal of stop
- 90 Durometer
- For concrete or cinder block walls in security applications
- Convex design



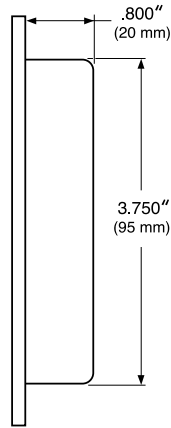
3002 EDP Number	Diameter		Projection		Security Torx Fastener		Quantity Per Carton	Carton Weight	
	Inches	(mm)	Inches	(mm)	Inches	(mm)		LBS.	(Kg)
81 – 1001	2 $\frac{5}{8}$ "	(66.7)	1 $\frac{1}{4}$ "	(31.8)	$\frac{3}{8}$ " x 2 $\frac{1}{2}$ "	(9.5 x 63.5)	25	15	(6.8)

**DETENTION HARDWARE**

**Heavy Duty Pulls and Handles**

**1004 – Flush pull – manganese bronze**

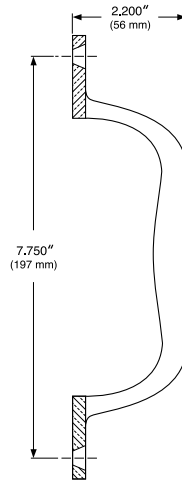
- Institutional type – one piece casting
- Supplied with security fasteners



1004 EDP Number	Finish	Number of 1/4 – 20 x 1/2 security screws per piece	Quantity Per Box	Quantity Per Carton	Carton Weight	
					LBS.	(Kg)
32 – 2200	26D	4	5	30	45	(20.4)

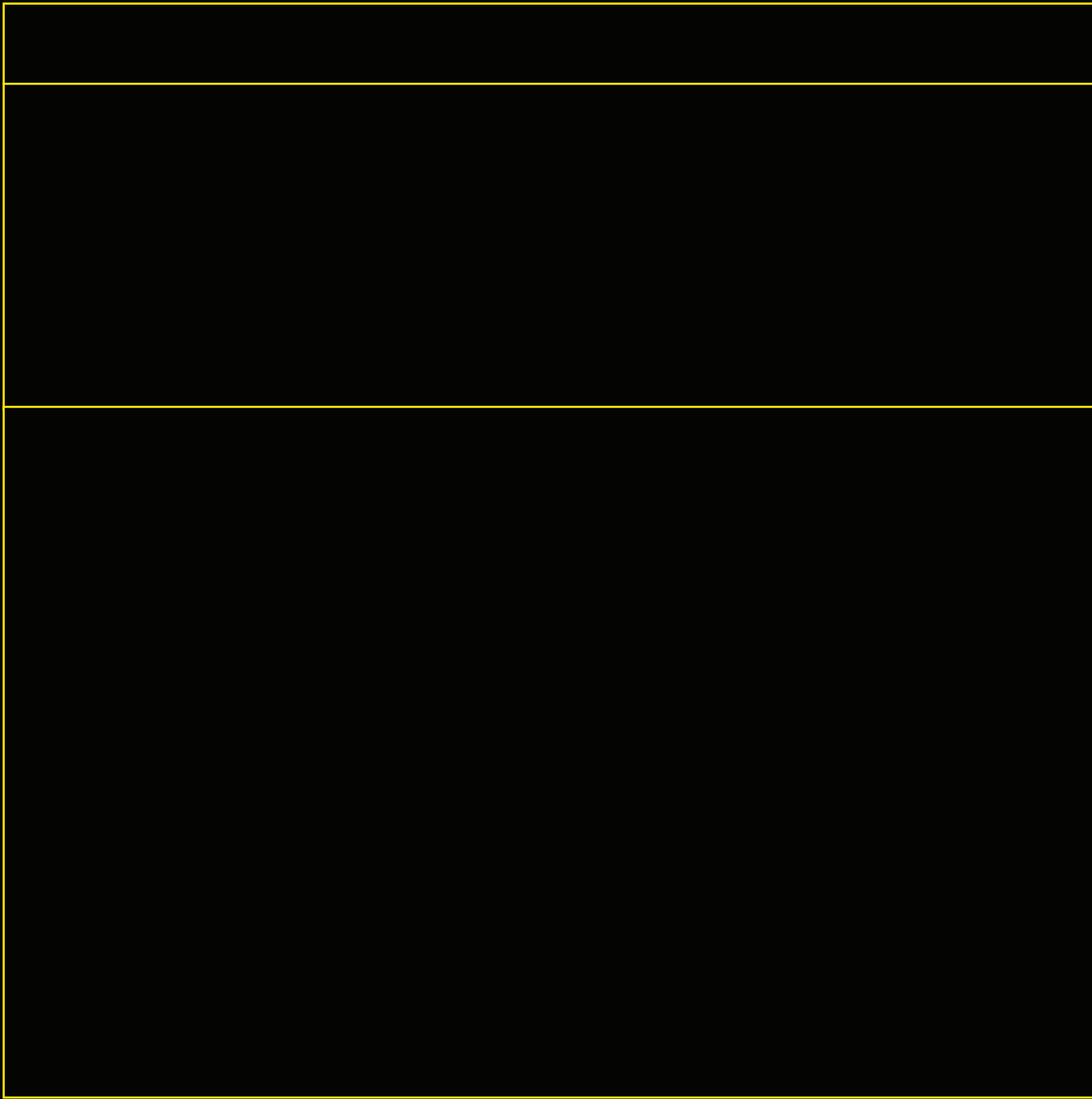
**2001 – Grip/pull handle– manganese bronze**

- Heavy duty casting
- Supplied with security fasteners



2001 EDP Number	Finish	Number of 3/8 – 16 x 5/8 security screws per piece	Quantity Per Box	Quantity Per Carton	Carton Weight	
					LBS.	(Kg)
32 – 2100	26D	2	5	32	37	(16.8)





For more information on Stanley Security Solutions' products, services, and office locations visit our web site at [www.stanleysecuritysolutions.com](http://www.stanleysecuritysolutions.com)

Product information contained in this catalog has been compiled and presented with as much care and completeness as is reasonably possible. Errors or mistakes may be present, and in many cases, reliance has been placed on information supplied by other manufacturers which may be in error or which may be subject to changes or modifications by the manufacturer without notice and without obligation. Therefore, no guarantee can be made or should be assumed or implied with regards to product information contained in this catalog.



**Stanley Security Solutions, Inc.**

6161 E. 75th Street Indianapolis, Indiana 46250

©2011 Stanley Security Solutions, Inc. • [www.stanleysecuritysolutions.com](http://www.stanleysecuritysolutions.com)

10M R611  
SAH011