

FALCON®

MA Series

Grade 1 mortise lock

Overview

Falcon is committed to delivering a solid product at a solid price and the MA Series is one of Falcon's toughest, most dependable locks. It delivers high performance at an affordable cost for any commercial setting such as office buildings, universities, healthcare facilities, and multi-family applications. The MA Series lock makes retrofitting easy with its ability to be re-handed in the field without opening the mortise case. With BHMA Grade 1 Security, BHMA Grade 1 Operational along with UL 3 hour ratings, the MA Series is designed to meet your needs.

Features and benefits:

- Ability to easily rehand the lock in the field
- 1" stainless steel deadbolt with security roller pins
- 28 total functions
- Flexible trim and finish styles to match any design
- 2 piece, anti-friction stainless steel, field reversible latchbolt
- Accepts 5, 6 or 7 pin standard cylinders
- Accepts both Falcon and other manufactures small format interchangeable cores (SFIC)

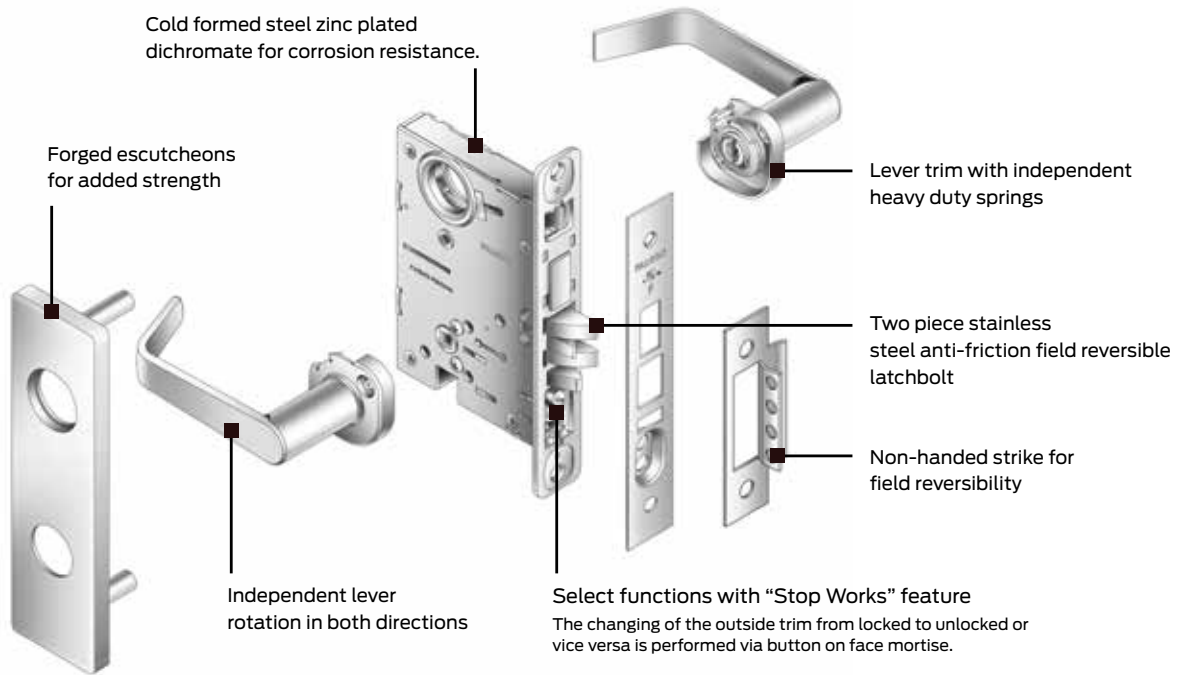


MA Series

Grade 1 performance featuring lever or knob trim

Options include:

- Abrasive lever
- Knurling
- Lead lining



Same great designs that can be suited with a variety of Falcon lock products

Available finishes

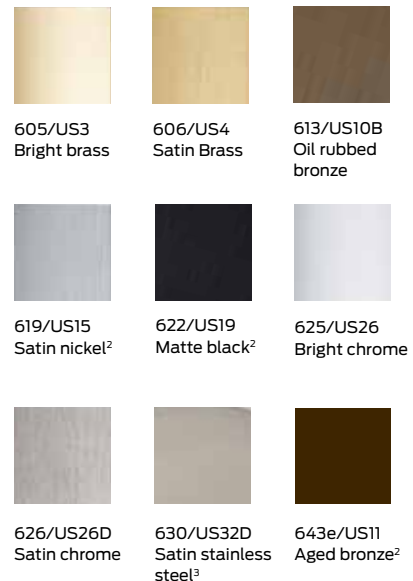
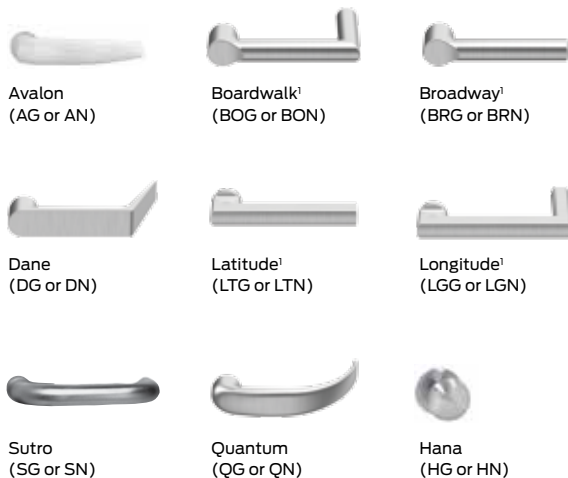
All lever and knob designs are available in either Gala or Napa trim styles



Gala (G) trim style



Napa (N) trim style



¹ Available in late 2016

² Available in late 2016 on levers only

³ Finish available on Dane, Quantum, Avalon, Sutro, and Hana lever/knob designs only

About Allegion

Allegion (NYSE: ALLE) is a global pioneer in safety and security, with leading brands like CISA®, Interflex®, LCN®, Schlage®, SimonsVoss® and Von Duprin®. Focusing on security around the door and adjacent areas, Allegion produces a range of solutions for homes, businesses, schools and other institutions. Allegion is a \$2 billion company, with products sold in almost 130 countries. For more, visit www.allegion.com.



ALLEGION™