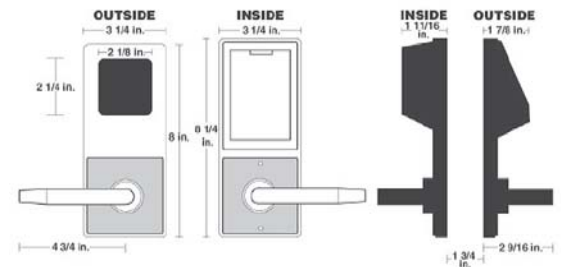


DL2700 Series

Electronic battery operated digital lock. Holds up to 100 user codes (1 master, 1 management & 15 users).

Specifications:

- Door Thickness:** Fits 1⁵/₈" to 1⁷/₈"
- Backset:** 2³/₄"
- Strike:** 1¹/₈" x 2³/₄" T strike & 1¹/₄" x 4⁷/₈"
ASA strike included
- Latchbolt:** UL Listed; fire rated 3 hours,
1/2" throw reversible
- Handing:** Non-handed
- Power:** Five AA alkaline batteries (included)
- Keypad:** All metal, 12 button. All functions programmed through keypad
- Door prep:** Standard ANSI A115 series prep, modified by adding additional through-bolt holes
- Compliances:** Grade 1 heavy duty cylindrical lockset. UL listed to the 10C positive pressure specification. FCC certified. ADA compliant levers.
- Cylinder:** Six pin solid brass, SC1 keyway, furnished with all key override locks. Schlage, Corbin-Russwin CL, Sargent 480 series, ASSA 65-611 & Lori cylinders can also be used with HW620 tailpiece (supplied).
- Interchangeable Core Models:** Standard model accepts six and seven pin cylinders from Best, Corbin-Russwin and Schlage.



PRODUCT	FINISH
DL2700	26D
Standard key override	

Note:



Top Notch Distributors, Inc.

East – Pennsylvania
800-233-4210
Fax 800-854-4146

Midwest – Missouri
800-211-4607
Fax 800-211-4608

Southwest – Texas
866-693-6903
Fax 866-693-6904

West – Nevada
800-722-4210
Fax 800-248-3620

www.topnotchinc.com

sales@topnotchinc.com